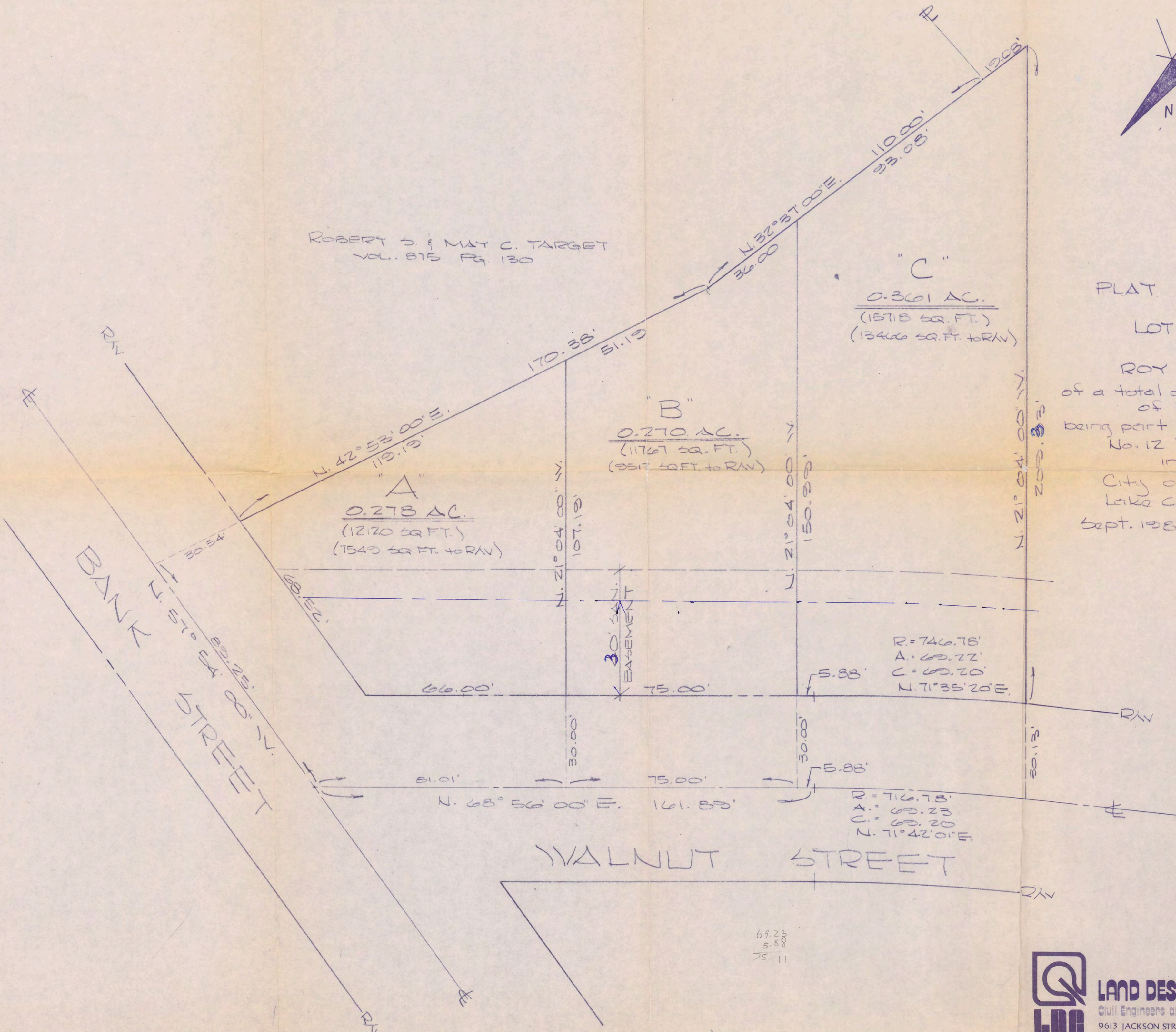


ROBERT S. & MAY C. TARGET
VOL. 815 Pg. 130

PLAT OF SURVEY
&
LOT SPLIT

for
ROY RONKE
of a total of 0.909 Acres
of Land
being part of Original Lot
No. 12 Tract No. 2
in the
City of Painesville
Lake County, Ohio
Sept. 1981 Scale 1"=20'



APPROVED
by the
City of Painesville,
Lake County,
City Planning Commission
NO PLAT REQUIRED

Betty Seacrist
Planning Commission Secretary

Date Sept. 22, 1981

69.23
5.88
75.11



LAND DESIGN consultants, inc.

Civil Engineers and Surveyors
9613 JACKSON STREET, MENTOR, OHIO 44060
TELEPHONE (216) 951-6872 or 354-6646

LDc#216