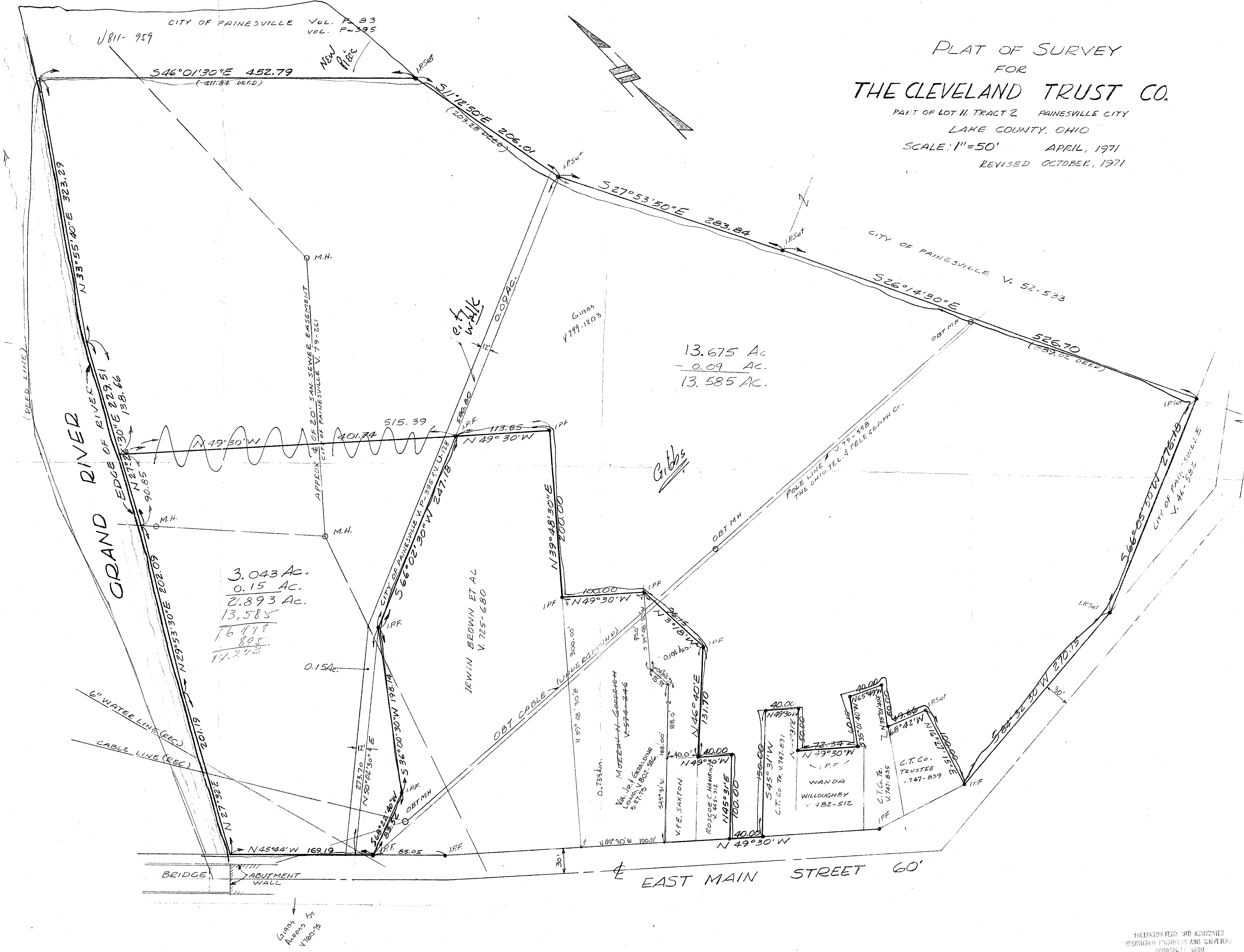


PLAT OF SURVEY  
FOR  
**THE CLEVELAND TRUST CO.**

PART OF LOT 11, TRACT 2 PAINESVILLE CITY  
LAKE COUNTY, OHIO

SCALE: 1"=50' APRIL, 1971  
REVISED OCTOBER, 1971



3.043 Ac.  
0.15 Ac.  
2.893 Ac.  
13.585  
16478  
895  
14.293

13.675 Ac  
- 0.09 Ac.  
13.585 Ac.