

J. R. Krause, Trustee to Summit Ry Co.
Q.C. - Feb. 15 - 1905 - \$500.00

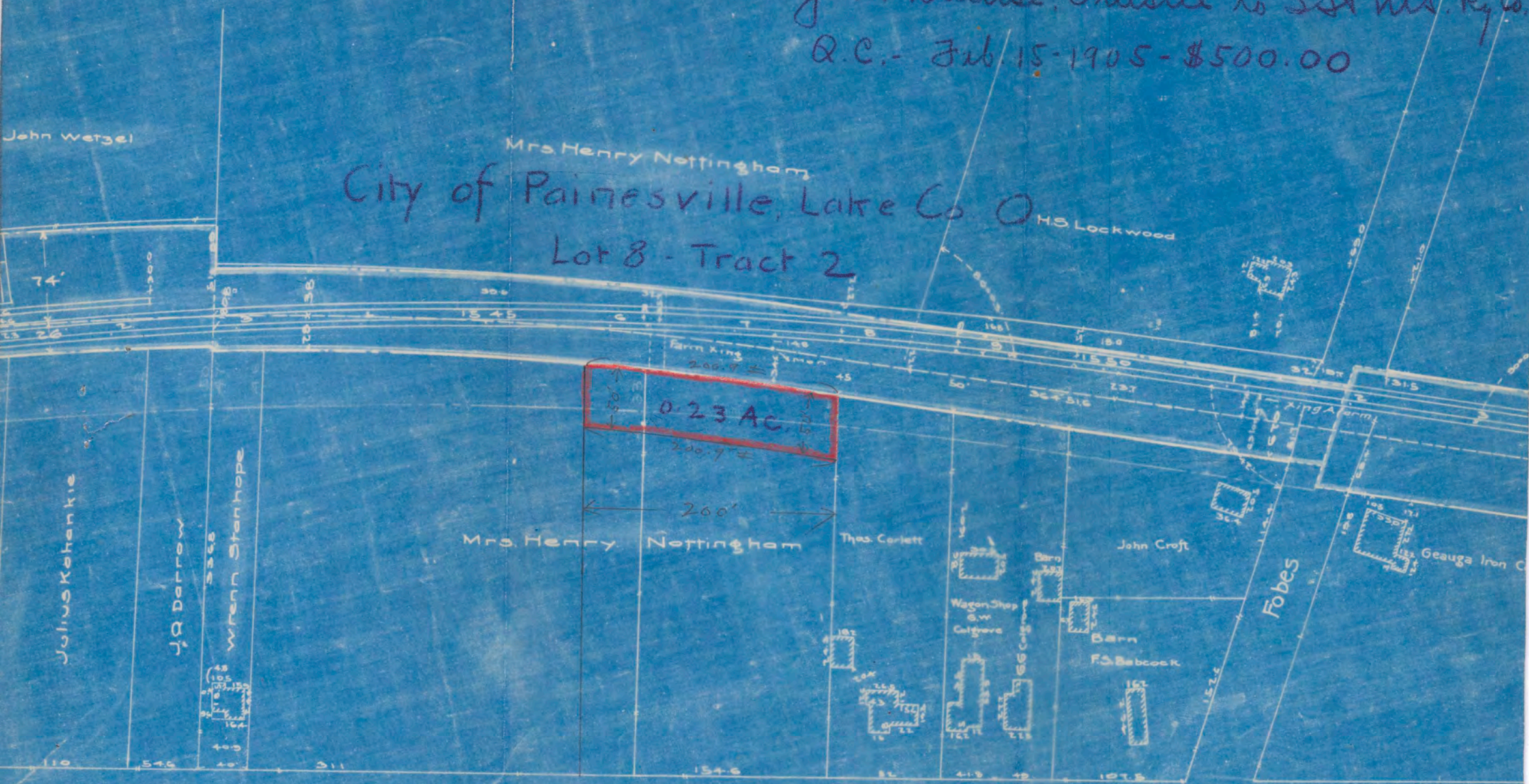
John Wetzel

Mrs. Henry Nottingham

City of Painesville, Lake Co. O

H.S. Lockwood

Lot 8 - Tract 2



0.23 AC

260'

Julius Kohankie

J.R. Darrow

Wrenn Stanhope

Mrs. Henry Nottingham

Thos. Corlett

John Croft

Fobes

Geauga Iron Co

Wagon Shop
G.W. Colby

Barn
G.W. Colby

Barn
F.S. Babcock

Ene