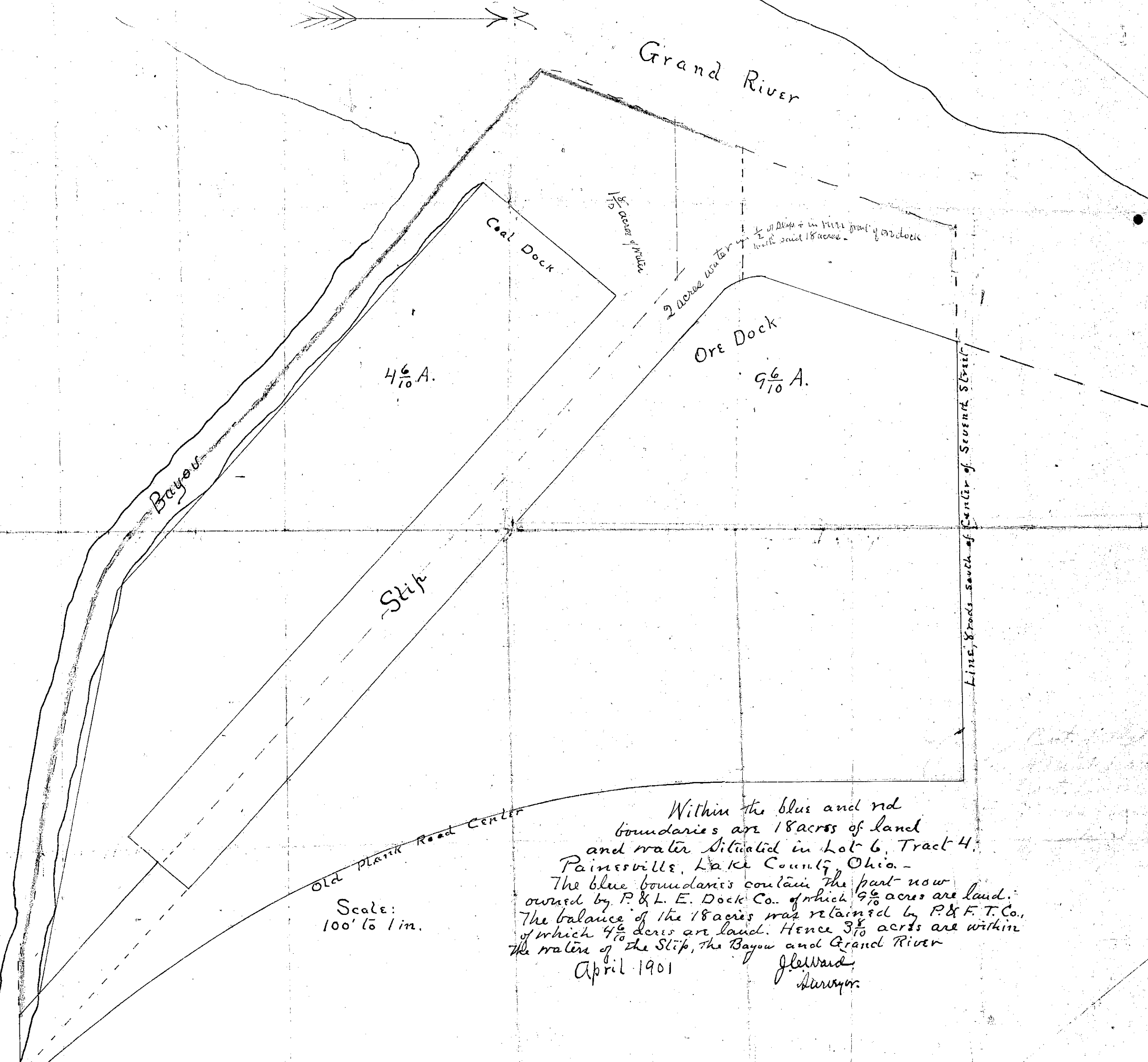


South line of lot 6.



4 ⁶/₁₀ A.

9 ⁶/₁₀ A.

Grand River

Coal Dock

Ore Dock

Slip

Bayou

Old Plank Road Center

Line, 8 rods south of center of Seventh Street

1/5 acres of water

2 acres water

1/2 of Slip + in this part of dock with said 18 acres.

Scale: 100' to 1 in.

Within the blue and red boundaries are 18 acres of land and water situated in Lot 6, Tract 4, Painesville, Lake County, Ohio. - The blue boundaries contain the part now owned by P. & L. E. Dock Co. of which 9 ⁶/₁₀ acres are land. The balance of the 18 acres was retained by P. & F. T. Co., of which 4 ⁶/₁₀ acres are land. Hence 3 ⁸/₁₀ acres are within the water of the Slip, the Bayou and Grand River

April 1901

J. J. Ward
Surveyor

West line of High Street