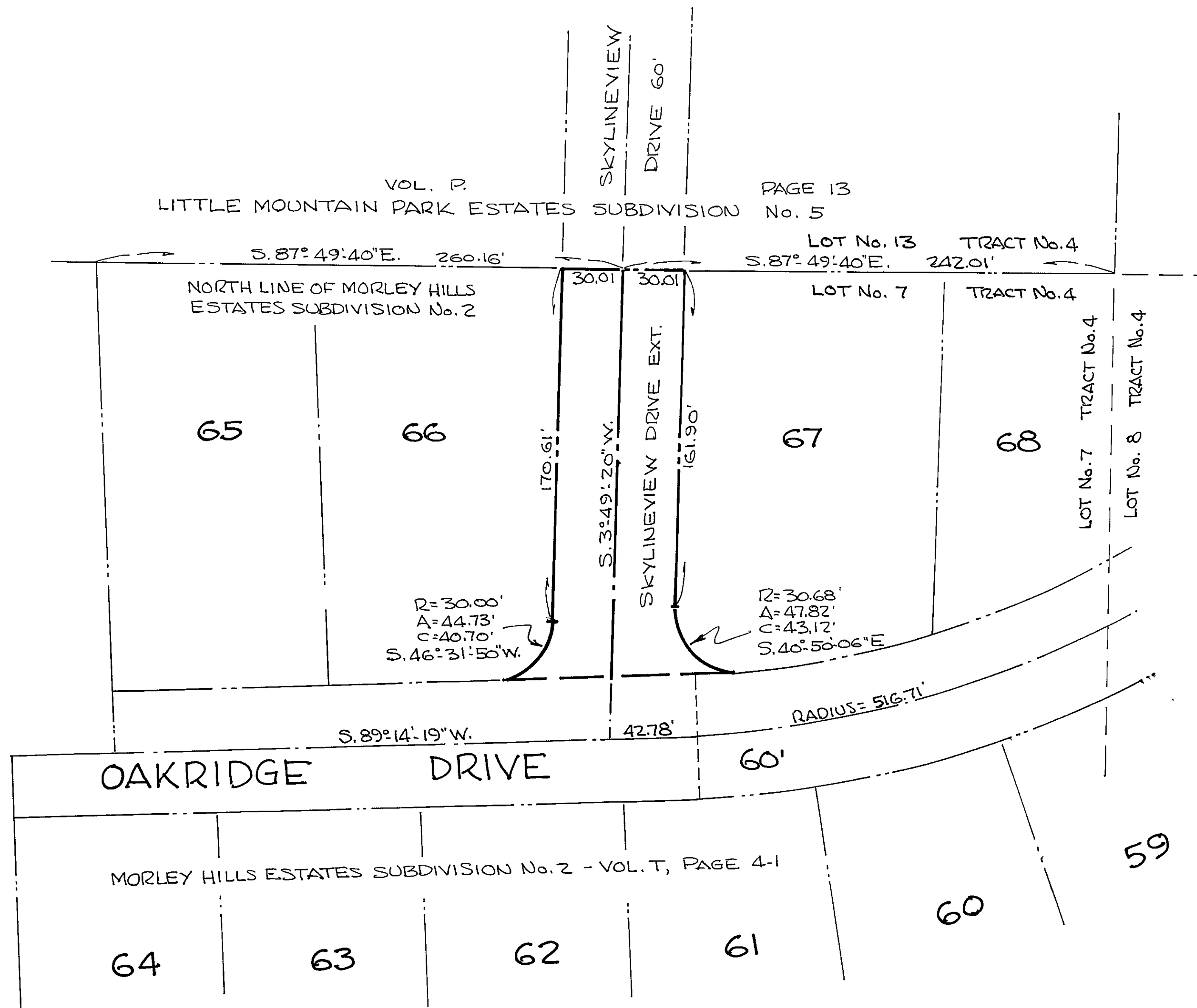


VACATION PLAT OF
SKYLINEVIEW DRIVE EXTENSION
 TOWNSHIP OF CONCORD, COUNTY OF LAKE
 AND STATE OF OHIO
 SCALE 1"=40'



BEING THAT PART OF SKYLINEVIEW DRIVE EXTENSION FROM THE NORTH RIGHT-OF-WAY LINE OF OAKRIDGE DRIVE TO THE NORTH LINE OF MORLEY HILLS ESTATES SUBDIVISION No. 2, AS SHOWN BY THE RECORDED PLAT IN VOLUME T, PAGE 4-1, IN LAKE COUNTY RECORD OF PLATS.

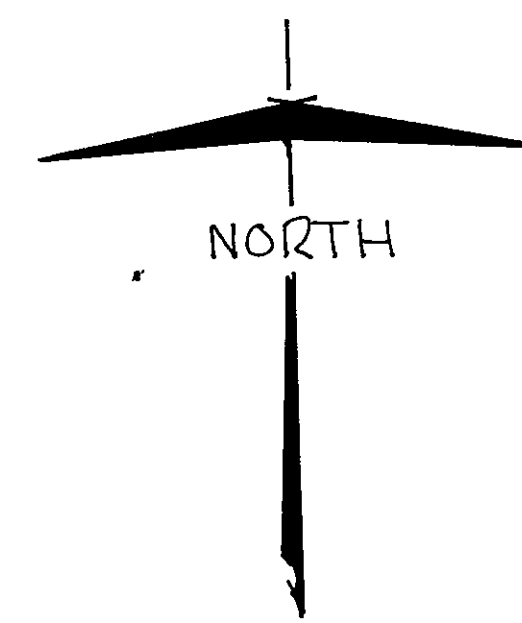
APPROVED BY THE BOARD OF COUNTY COMMISSIONERS OF LAKE COUNTY, OHIO, ON THIS _____ DAY OF _____ 197__.

APPROVED BY THE LAKE COUNTY PROSECUTOR ON THIS _____ DAY OF _____ 197__.

APPROVED BY THE LAKE COUNTY ENGINEER ON THIS _____ DAY OF _____ 197__.

APPROVED BY THE LAKE COUNTY PLANNING COMMISSION ON THIS _____ DAY OF _____ 197__.

APPROVED BY THE TOWNSHIP TRUSTEES OF CONCORD TOWNSHIP, LAKE COUNTY, OHIO, ON THIS _____ DAY OF _____ 197__.



PREPARED BY THE OFFICE OF THE LAKE COUNTY ENGINEER - THOMAS P. GILLES P.E.