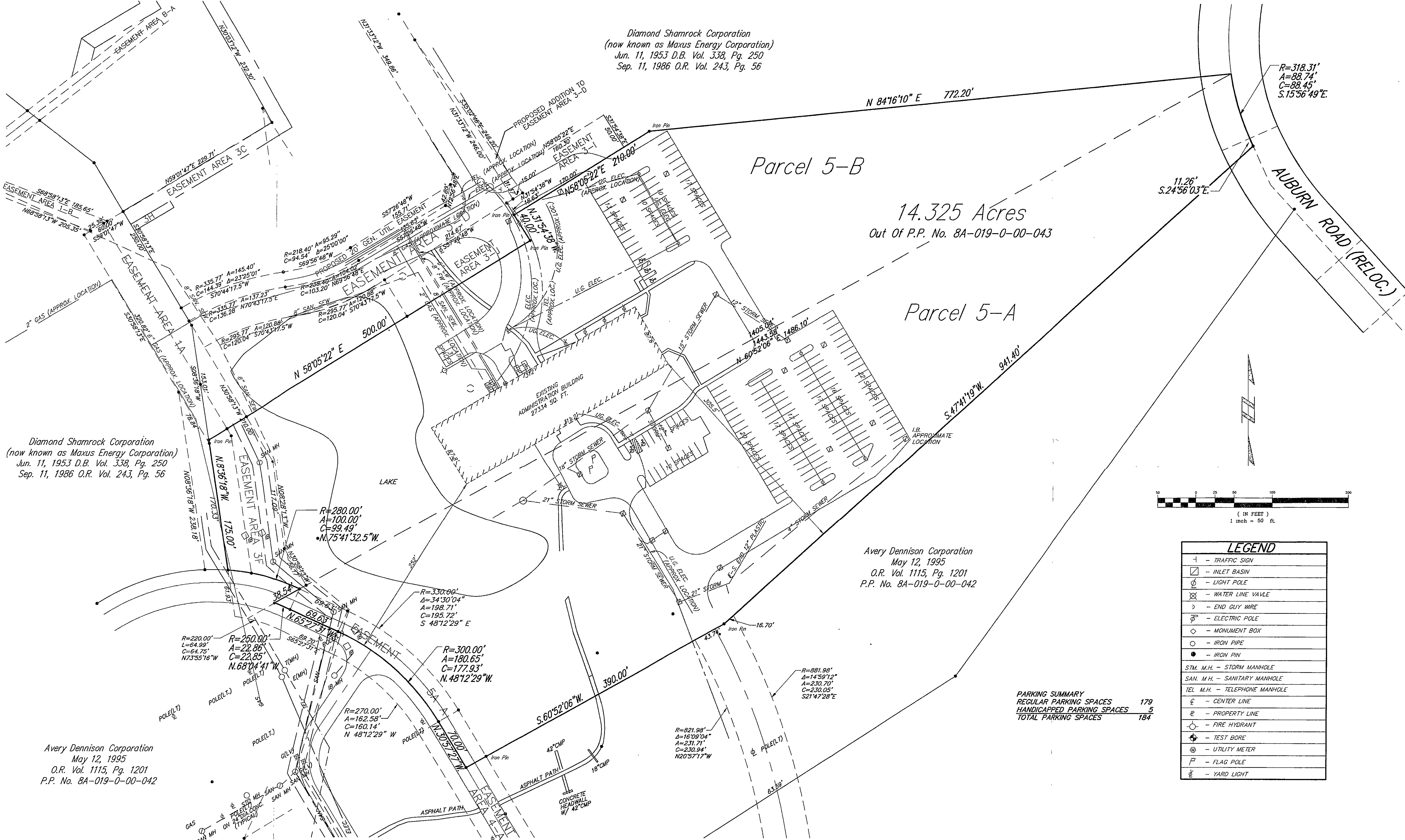


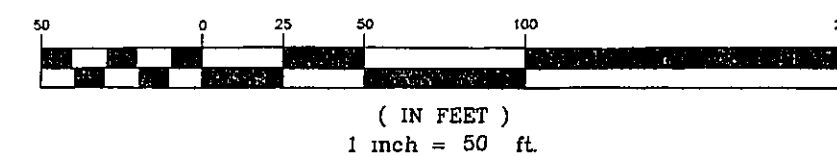
Diamond Shamrock Corporation  
 (now known as Maxus Energy Corporation)  
 Jun. 11, 1953 D.B. Vol. 338, Pg. 250  
 Sep. 11, 1986 O.R. Vol. 243, Pg. 56



Diamond Shamrock Corporation  
 (now known as Maxus Energy Corporation)  
 Jun. 11, 1953 D.B. Vol. 338, Pg. 250  
 Sep. 11, 1986 O.R. Vol. 243, Pg. 56

Avery Dennison Corporation  
 May 12, 1995  
 O.R. Vol. 1115, Pg. 1201  
 P.P. No. 8A-019-0-00-042

Avery Dennison Corporation  
 May 12, 1995  
 O.R. Vol. 1115, Pg. 1201  
 P.P. No. 8A-019-0-00-042



LEGEND	
	TRAFFIC SIGN
	INLET BASIN
	LIGHT POLE
	WATER LINE VALVE
	END GUY WIRE
	ELECTRIC POLE
	MONUMENT BOX
	IRON PIPE
	IRON PIN
	STM. M.H. - STORM MANHOLE
	SAN. M.H. - SANITARY MANHOLE
	TEL. M.H. - TELEPHONE MANHOLE
	CENTER LINE
	PROPERTY LINE
	FIRE HYDRANT
	TEST BORE
	UTILITY METER
	FLAG POLE
	YARD LIGHT

PARKING SUMMARY	
REGULAR PARKING SPACES	179
HANDICAPPED PARKING SPACES	5
TOTAL PARKING SPACES	184

COPYRIGHT - DATE 09-16-99 10:45, CT CONSULTANTS INC. H:\1999\89109\UNOC\PROSDRAWING

**CT Consultants, Inc.**  
 Engineers • Architects • Planners  
 Willoughby • Mentor • Columbus • North Canton • Youngstown

REV. NO.	DESCRIPTION	DATE	BY	CHK'D.

DATE:	9-16-99
DRAWN BY:	J.L.
CHECKED BY:	T.P.H.
APPROVED BY:	
F.B. No.	1151 PG. 3

ALTA/ACSM SURVEY AND LOT SPLIT  
 FOR  
 MAXUS ENERGY CORPORATION  
 IN PART OF ORIGINAL LOT NO. 10, TRACT 3  
 CONCORD TOWNSHIP, LAKE COUNTY, OHIO

SCALE	
HOR.	1" = 60'
VERT.	
CONTRACT No.	
99109	
SHEET NO.	OF
1	