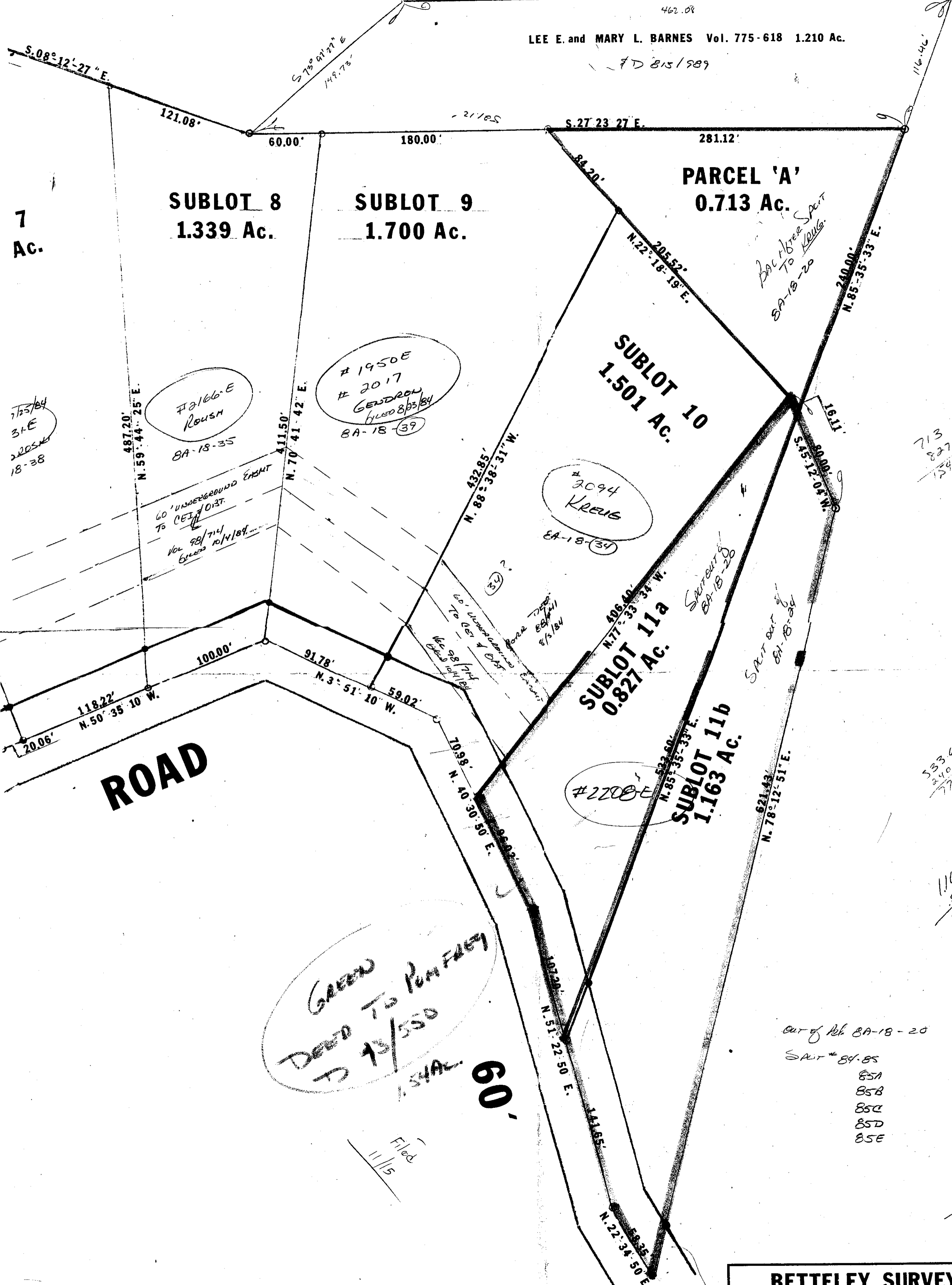


FD 815/989



7 Ac.

SUBLOT 8
1.339 Ac.

SUBLOT 9
1.700 Ac.

PARCEL 'A'
0.713 Ac.

SUBLOT 10
1.501 Ac.

SUBLOT 11a
0.827 Ac.

SUBLOT 11b
1.163 Ac.

ROAD

GREEN DEED TO RICH FLETCHER TO 12/5/50

60'

713
827
1340

533.66
240
773.66

1163
827
1990

out of blk BA-18-20
SPR # 84-85
85A
85B
85C
85D
85E

D 93/550

Filed
11/15

7/25/84
31 E
2205
18-38

487.20'
N. 59° 44' 25" E.

72166-E
ROUSH
BA-18-35

1950E
2017
GREEN
FILED 8/25/84
BA-18-39

2094
KREIG
BA-18-34

2208E

SPR out of
BA-18-20

60' UNDERGROUND CASHT
TO CEJ DIST.
Vol 98/714
FILED 10/14/84

60' UNDERGROUND CASHT
TO CEJ DIST.
Vol 98/714
FILED 10/14/84

SPR out of
BA-18-20

SPR out of
BA-18-20

S. 08° 12' 27" E

121.08'

60.00'

180.00'

S. 27° 23' 27" E

281.12'

116.46'

S 73° 01' 27" E
149.73'

84.20'

N. 22° 18' 19" E

240.00'
N. 85° 35' 33" E

411.50'
N. 70° 41' 42" E

432.85'
N. 88° 38' 31" W

16.11'

3000.00'
S. 45° 12' 04" W

100.00'

91.78'

N. 3° 51' 10" W

59.02'

118.22'
N. 50° 35' 10" W

20.06'

709.8'
N. 40° 30' 50" E

406.40'
N. 77° 33' 34" W

522.50'
N. 85° 35' 33" E

621.43'
N. 78° 12' 51" E

1072.0'
N. 51° 22' 50" E

583.55'
N. 22° 34' 50" E