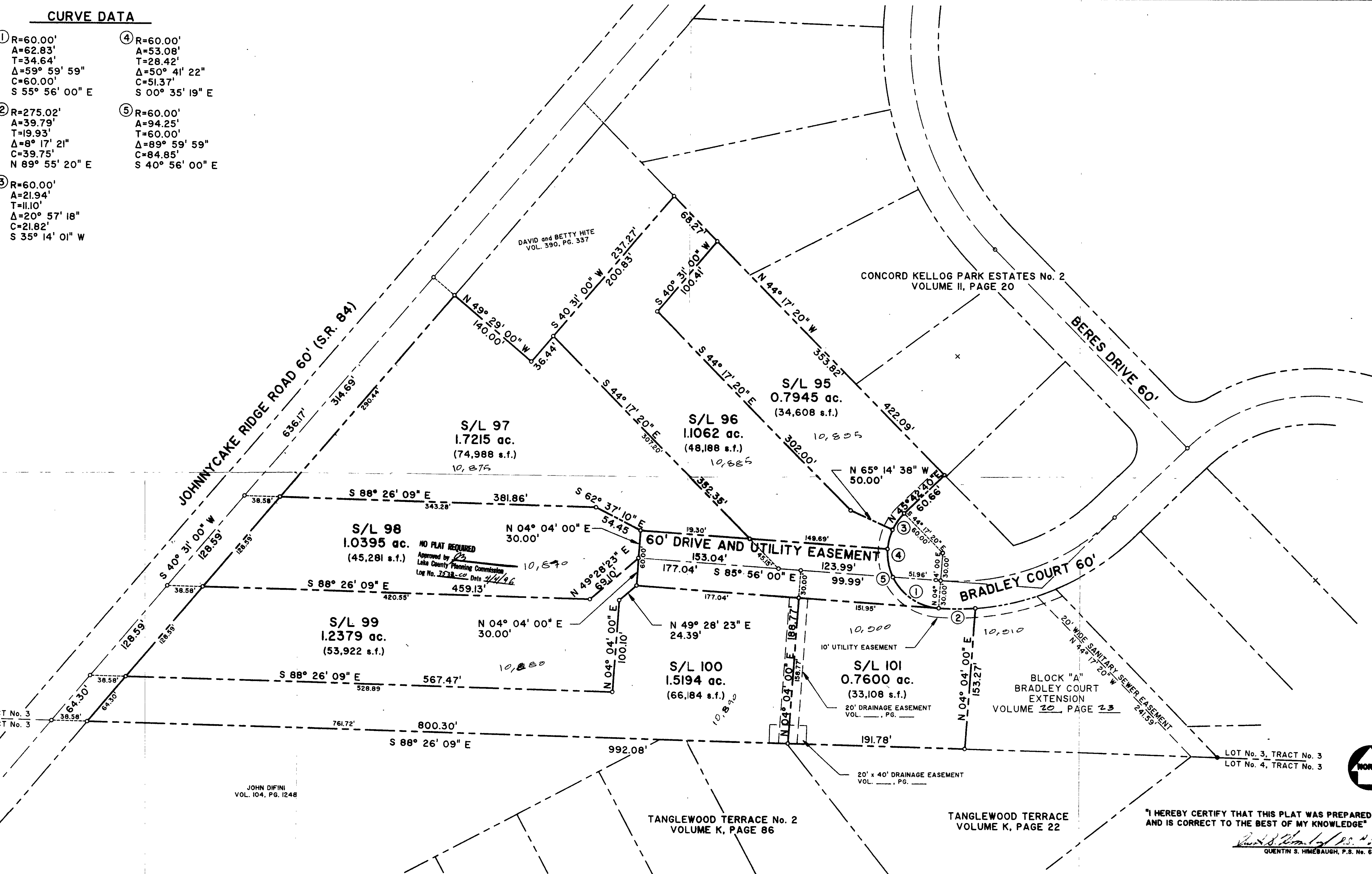


CURVE DATA

- ① R=60.00'
A=62.83'
T=34.64'
Δ=59° 59' 59"
C=60.00'
S 55° 56' 00" E
- ② R=275.02'
A=39.79'
T=19.93'
Δ=8° 17' 21"
C=39.75'
N 89° 55' 20" E
- ③ R=60.00'
A=21.94'
T=11.10'
Δ=20° 57' 18"
C=21.82'
S 35° 14' 01" W
- ④ R=60.00'
A=53.08'
T=28.42'
Δ=50° 41' 22"
C=51.37'
S 00° 35' 19" E
- ⑤ R=60.00'
A=94.25'
T=60.00'
Δ=89° 59' 59"
C=84.85'
S 40° 56' 00" E

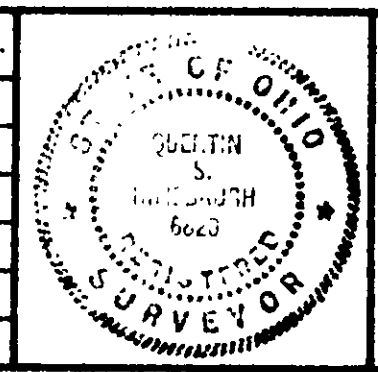


JOHN DIFINI
VOL. 104, PG. 1248

"I HEREBY CERTIFY THAT THIS PLAT WAS PREPARED AND IS CORRECT TO THE BEST OF MY KNOWLEDGE"

Quentin S. Himebaugh, P.S.
QUENTIN S. HIMEBAUGH, P.S. No. 68

DESCRIPTION	DATE	BY	CHK'D.



Himebaugh and Associates
Surveyors and Site Consultants
38083 West Spaulding St.
Willoughby, Ohio 44094
(216) 946-1761

LITTLE MOUNTAIN HOMES, INC.
PAINESVILLE, OHIO 44077

DATE: FEB. 24, 1993
DRAWN BY: D. W. NOVAK
CHECKED BY: Q. HIMEBAUGH
APPROVED BY: [Signature]
P.S. No. 68

LOT SPLIT
SITUATED IN TOWNSHIP OF CONCORD, COUNTY OF LAKE AND STATE OF OHIO, KNOWN AS BEING PART OF LOT No. 3, TRACT NO. 3 AND ALSO BEING BLOCK "B" OF BRADLEY COURT EXTENSION, VOLUME 20, PAGE 23 LAKE COUNTY RECORD OF PLATS