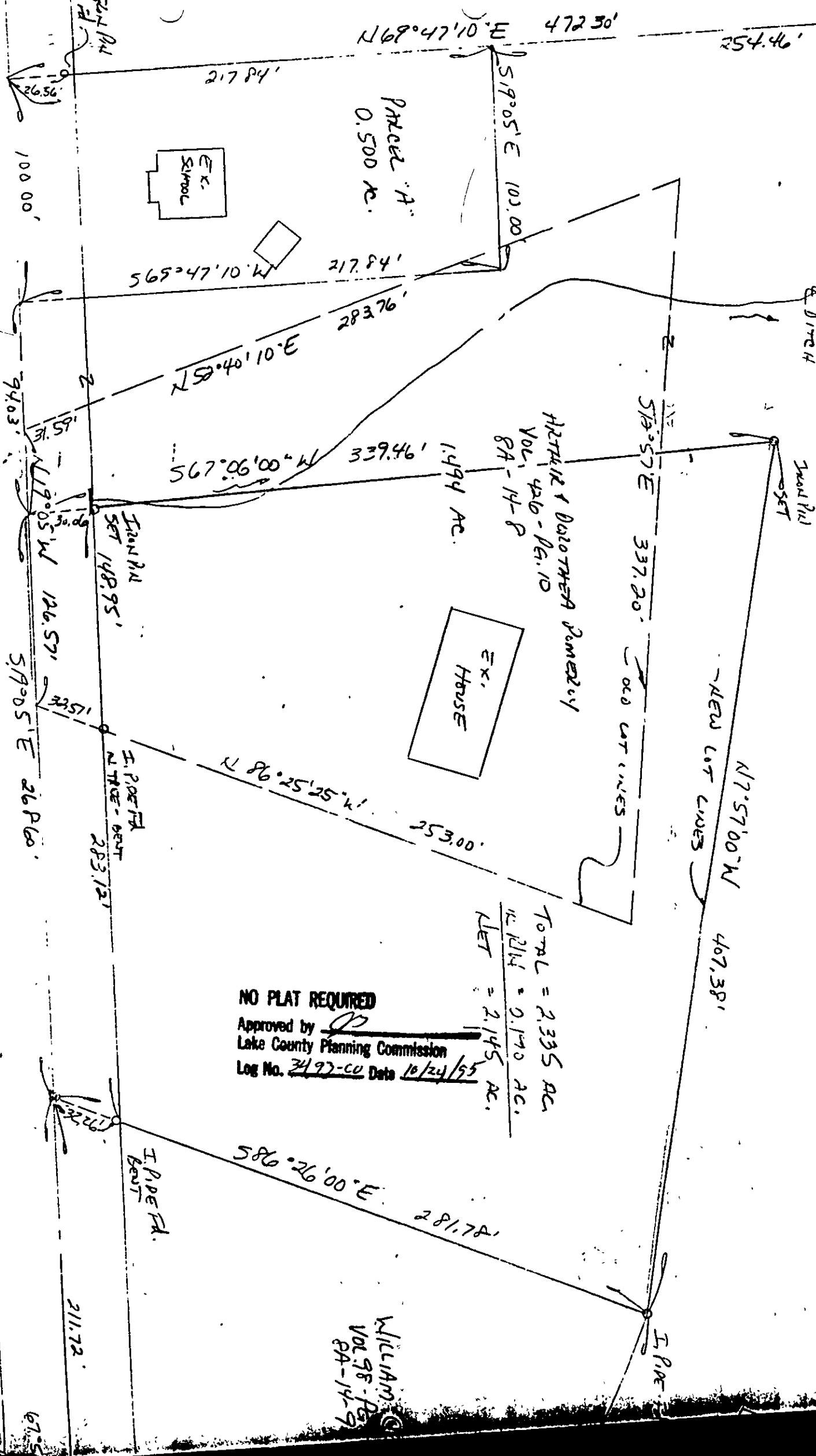



PAVELLINA ROAD - 60'



NO PLAT REQUIRED
 Approved by 
 Lake County Planning Commission
 Log No. 3497-CO Date 10/24/95

TOTAL = 2,335 AC.
 11214 = 0,190 AC.
 NET = 2,145 AC.

WILLIAM
 VOL 95 - PG
 84-14-9

67-5