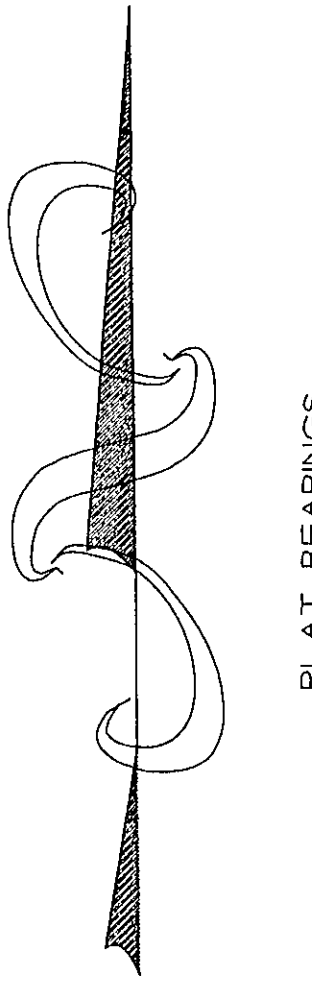
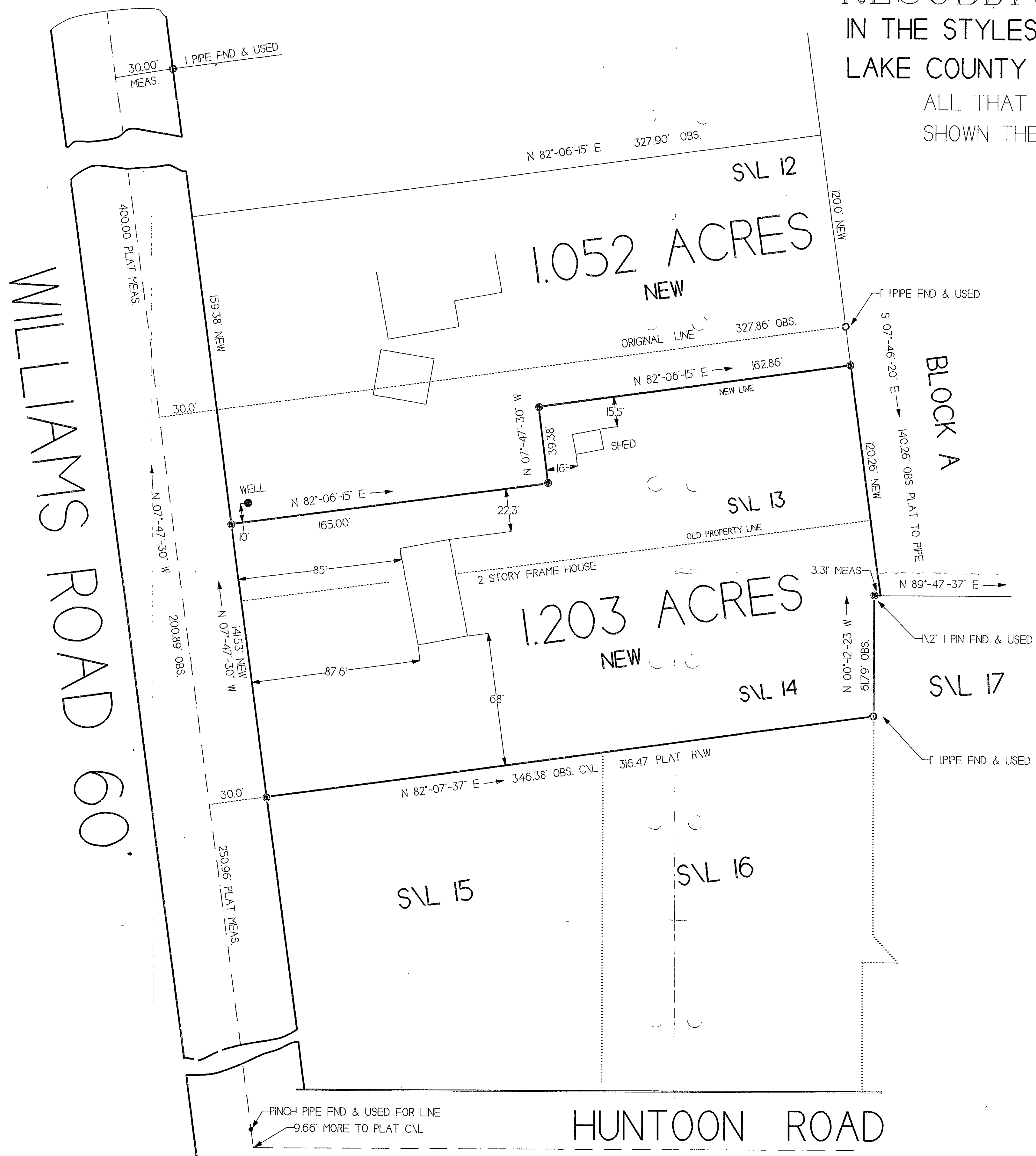


# RESUBDIVISION OF LOTS IN THE STYLES SUBDIVISION, CONCORD TOWNSHIP LAKE COUNTY, OHIO

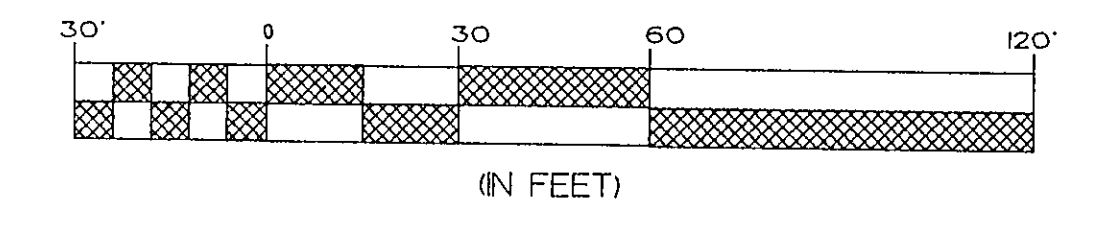
ALL THAT CERTAIN LAND IN PLAT VOLUME L PAGE 82  
SHOWN THEREIN AS SUBLOTS 12- 13- AND 14



### LEGEND

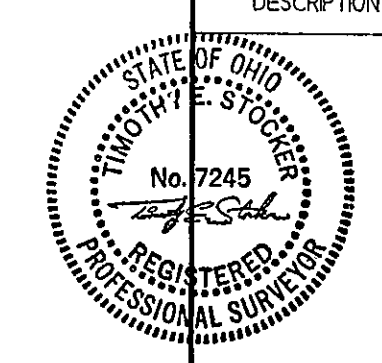
- ⊠ MONUMENT BOX
- IRON PIN
- IRON PIPE
- ⊕ P.K. NAIL WITH SHINER
- ⊙ POWER UTILITY POLE
- ⊗ WATER CONNECTION
- △ AIR CONDITIONER UNIT
- ⊙ SANITARY SEWER MAN-HOLE
- ♿ HANDICAPPED PARKING
- ⊠ TRAFFIC LIGHT
- ⊙ UTILITY BOX
- ⊙ GAS METER
- ⊗ FIRE HYDRANT
- ⊙ STORM SEWER MAN-HOLE
- ⊙ DOWNSPOUT
- ⊙ METAL SIGNAGE
- ⊠ CATCH BASIN INLET
- ↗ RUNOFF DIRECTION
- ⊗ GAS VALVE

### GRAPHIC SCALE



NO PLAT REQUIRED  
Approved by  
Lake County Planning Commission  
Log No. 2531-02 Date 5/10/96

THIS SURVEY WAS PERFORMED  
TO THE ACCURACY REQUIRED  
IN CHAPTER 4733-37 OF OHIO  
ADMINISTRATIVE CODE.



**CABBS SURVEYING SERVICE**  
WESTERN RESERVE BUILDING  
708 NORTH ST. CLAR STREET SUIT 300  
PARADELLA OH 44027  
PHONE (216) 337-594  
FAX (216) 337-480  
1800-337-594

*Timothy E. Stocker*  
TIMOTHY E. STOCKER P.S. 7245  
COPYRIGHT 1996 CABBS SURVEYING

DRAWN BY	SCALE	DATE	PRINTED	DRAWING NO.	SHEET NO.
TES	1" = 30'	APR. 96		1382PLOT	1 X 1