

Elaine R. Crane  
Vol. 650 Pg. 893

Bearings are based on Plat  
Volume 1, Page 11 of the  
Latae County Plat Records

PARCEL 1  
224,483 sq.ft.  
5.1534 acres

EXCLUSIVE OF THE RIGHT-OF-WAY  
211,408 sq.ft.  
4.8532 acres

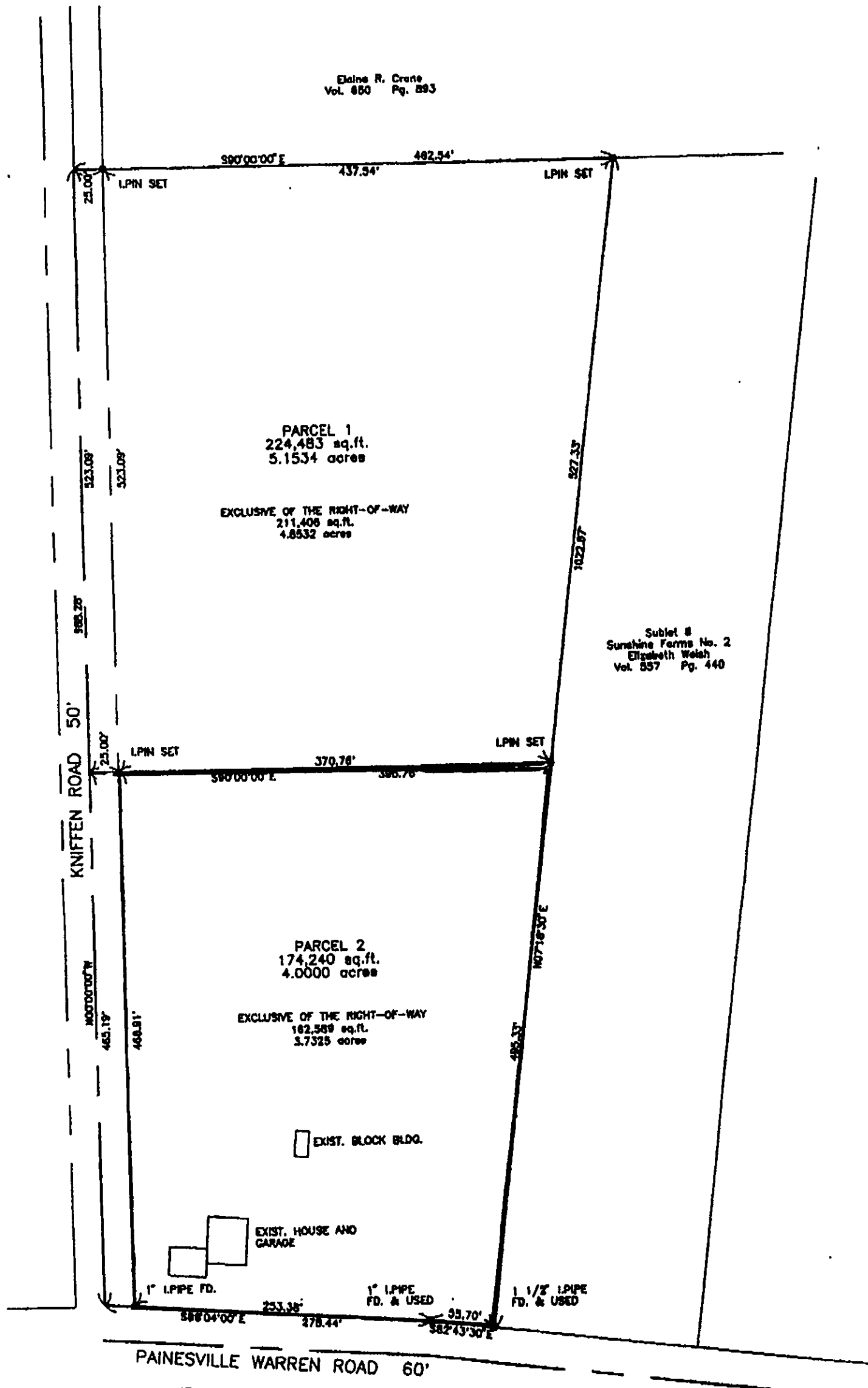
Sublet #  
Sunshine Farms No. 2  
Elizabeth Welsh  
Vol. 557 Pg. 440

PARCEL 2  
174,240 sq.ft.  
4.0000 acres

EXCLUSIVE OF THE RIGHT-OF-WAY  
162,589 sq.ft.  
3.7325 acres

EXIST. BLOCK BLDG.

EXIST. HOUSE AND  
GARAGE



PLAT REQUIRED  
Examined by MN  
City Planning Commission  
Log No. 3501-LE Date 12-1-95

LOT SPLIT  
SUNSHINE FARMS NO. 2