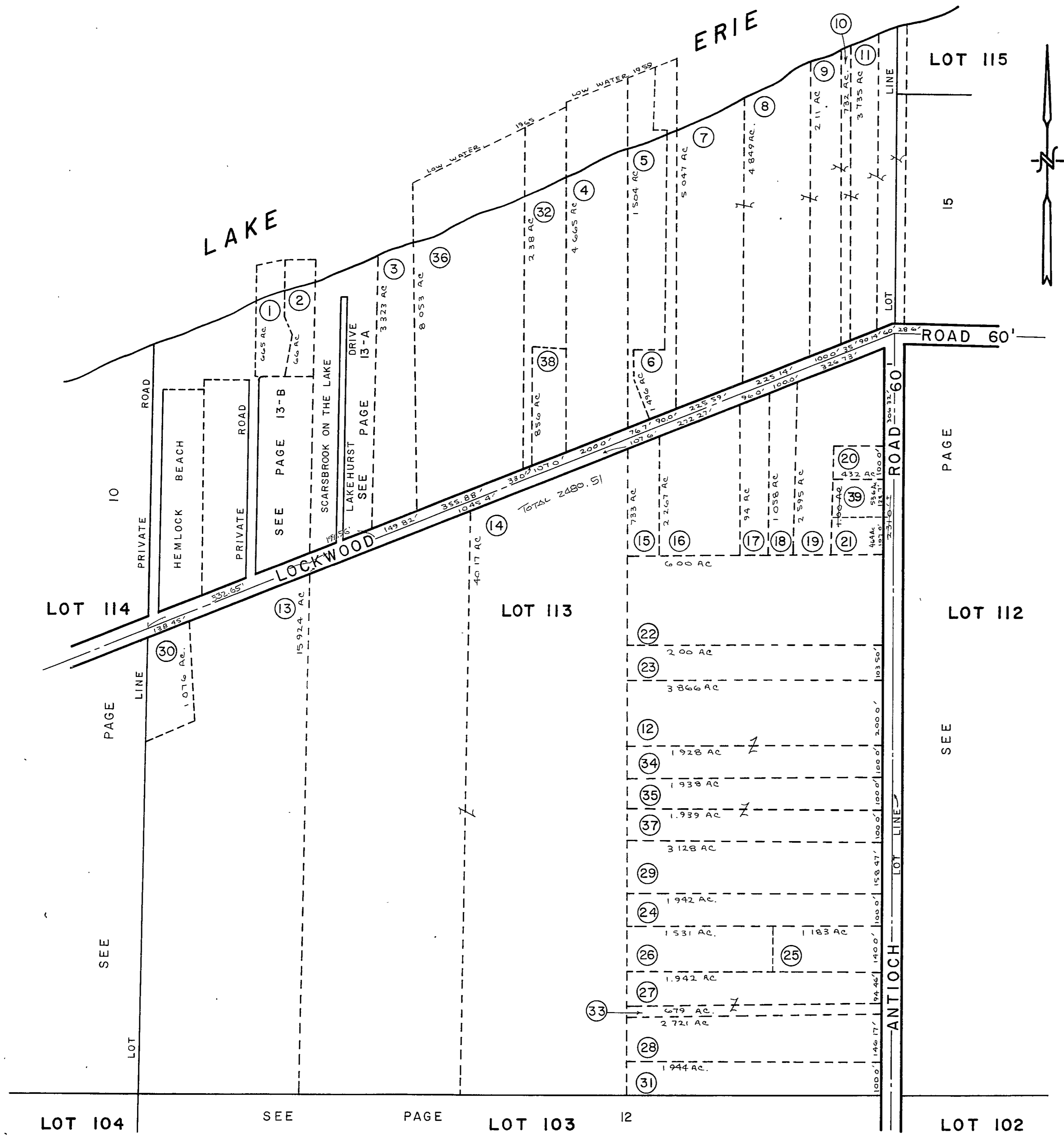


NORTH PERRY VILLAGE

LOT 113



PCL. NO.	O	W	N	E	R	S
1	JOHN + SOPHIA MUSIAL 4-8-70 V732-570					
2	RANDALL L + LAURA PHILLIPS 7-17-73 V 781-285					
3	CORRINA P NOSS 8-5-64 V 601-494					
4	JEAN A VRKICH 8-31-72 V 769-446					
5	JAMES F. + MARCQUERITE J SMILEY 6-8-53 V 338-102					
6	HERBERT + BETTY R. V. 667- SCHNEIDER 5-10-67 399					
7	THE BOARD OF PARK COMM. 1-6-71 V 747-128					
8	THE BOARD OF PARK COMM. 7-6-73 V 780-1152					
9	THE BOARD OF PARK COMM 9-8-67 V 676-512					
10	THE BOARD OF PARK COMM 9-8-67 V 676-512					
11	THE BOARD OF PARK COMM 8-3-73 V. 781-1426					
12	LEWIS A + HELEN LESIACSEK 8-31-62 V. 556-247					
13	GERTRUDE + EDWARD LOSELY 11-9-64 V 608-293 V 612-261,265					
14	EDWARD H + GERTRUDE LOSELY 10-24-69 V 725-491					
15	CHESTER A. + ALICE L KOZOL 5-28-66 V. 658-380					
16	ROBT G + JOYCE BROOKWAY 8-5-66 V. 650-301					
17	BRIAN O. + CYNTHIA J. GILSON 3-29-71 V 749-81					
18	HARRY L + RUTH M OLOHAM 5-31-63 V 573-285 V 714-409					
19	ROBT. C + ETHEL M. HAZEL 7-5-50 V. 289-316					
20	EARL + BETTY P SEESE 11-21-59 V 492-352					
21	O'NEAL + CLARA GLASS 1-24-72 V. 760-869					
22	JOHN + JOSE PHINE 9-15-62 DROBNICK V. 537-334					
23	LOUIS E + BEATRICE OROSZ 6-14-54 V 360-439					
24	GERALD G KING 3-7-69 V 712-205					
25	JOHN JR + GRACE LEONARD 7-6-65 V 622-547					
26	JOHN P. + PAUL M. MAYER 12-1-69 V 727-329					
27	THOS. M. + EUNICE V. BUNNEL 2-25-59 V. 474-703					
28	RUTH RAINERY 5-29-53 36 V. 337-360 12-8-72 V. 775 30					
29	JAMES K + MARCELLA THARP 12-12-63 V. 587-370					
30	JOHN T. + ELMA S. HAKOLA 7-28-69 V 720-425					
31	MARY C. GOUNDREY 4-23-68 5-26-65 V 619-592 V 696-504					
32	TOIVO G + FLORENCE W WERRONEN 9-1-65 V. 627-256					
33	THOS. M. + EUNICE V. BUNNELL 4-17-64 V 594-397					
34	LEWIS A. + HELEN LESIACSEK 8-31-62 V. 556-247					
35	LEROY V. + BETTY J. ZINN 10-31-67 V. 680-513					
36	BOARD OF PARK COMM. 1-13-69 V 709-951					
37	LEROY V. + BETTY J. ZINN 10-31-67 V 680-513					
38	PAUL L. GRACE L. KNEISLEY 3-29-73 V. 776-1361					
39	BIRCH ELINOR S MOATS V 794 475 8 274					

SCALE, 1" = 200'
0 50 100 200 300 400
R.L.K.
8-31-73