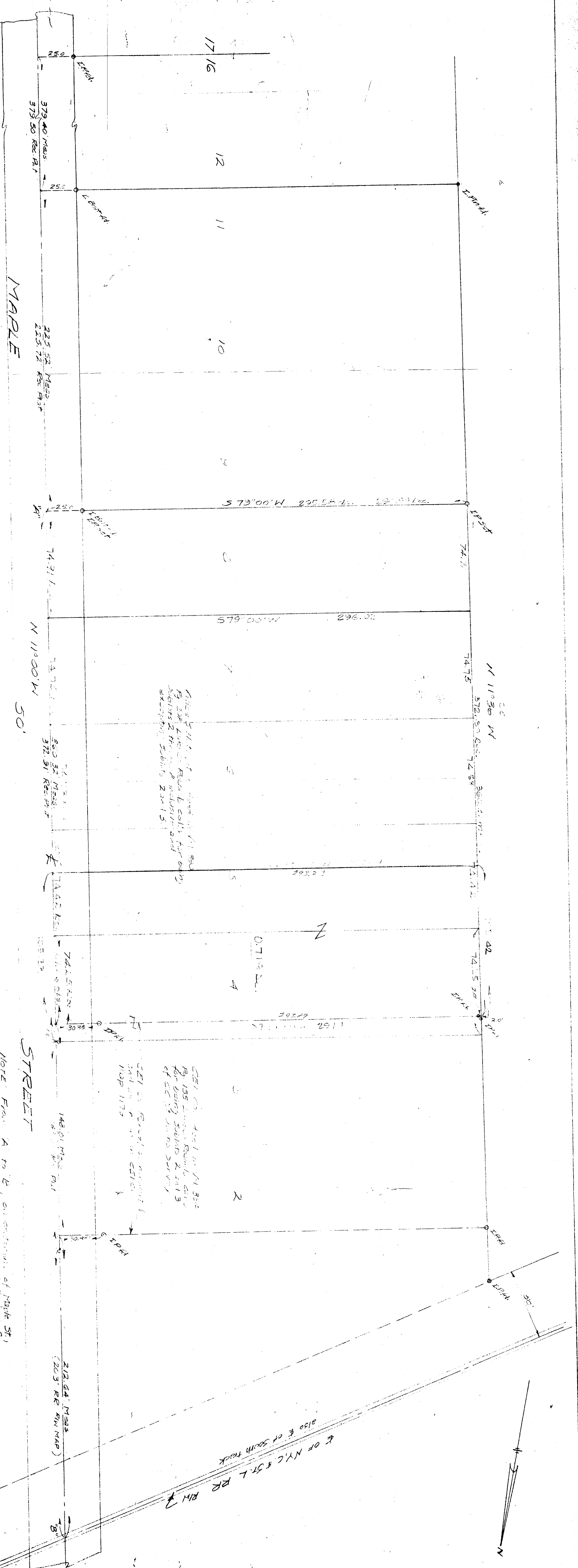


FULLERTON AND KEENE
 CIVIL ENGINEERS AND
 SURVEYORS
 PRINESVILLE - OHIO

PLAT OF SURVEY OF
 NOTE PROPERTY
 CC OF JOHN'S SURVEY IN LOTS 4-5 - TOWN - VILL.
 LAKE COUNTY OHIO JULY 1933
 SCALE 1" = 30'

NOTE FROM A TO B, ON CENTERLINE OF Maple St.
 The bearing of the line is S 89° 55' 15" W
 and the distance is 233.54 ft.
 The bearing of the line is S 89° 55' 15" W
 and the distance is 233.54 ft.



7491
 7475
 7455
 7435
 7415

2000 143' A