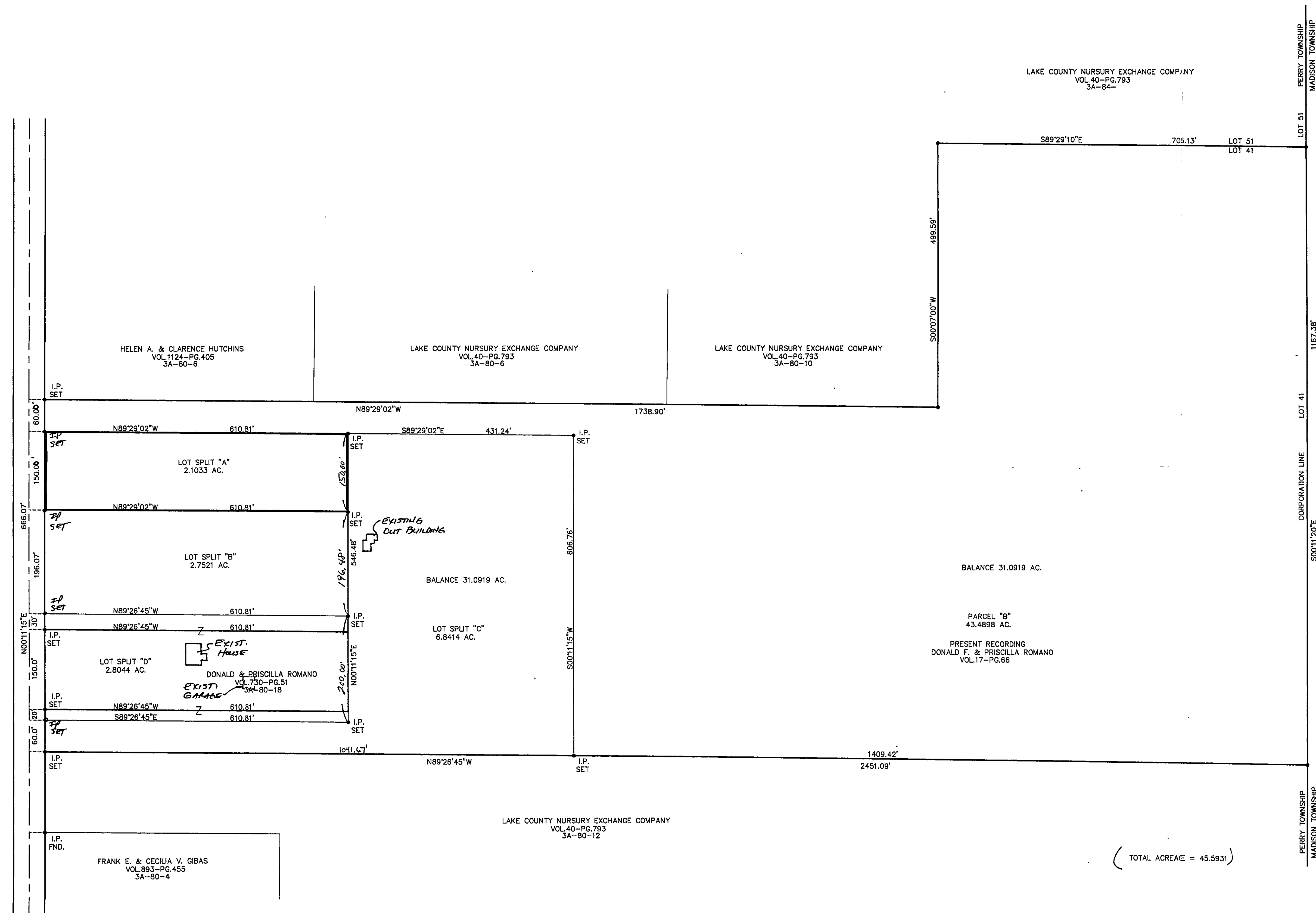
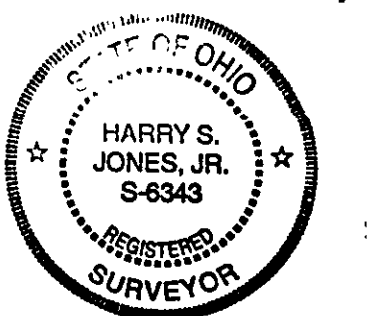


TURNERY ROAD - 60'



(TOTAL ACREAGE = 45.5931)



REV. NO.	DESCRIPTION	DATE	BY	CHK'D

NO PLAT REQUIRED
 LOT LINE ADJUSTMENT
 Approved by **DAVID RADACHY**
 Lake County Planning Commission
 Log No. 3731 PE Date 4/16/98

bj BABCOCK, JONES AND ASSOCIATES, INC
 CIVIL ENGINEERS - SURVEYORS - LAND PLANNERS
 PAINESVILLE OHIO 44077

DATE	4/6/98
DESIGN BY	H.J.
DRAWN BY	T.R.
APPROVED BY	H.J.

LOT SPLIT FOR PRICILLA ROMANA
 TURNERY ROAD PERRY TWP. LAKE COUNTY

SCALE	1" = 100'
JOB NO	98-091
SHEET OF	1 / 1