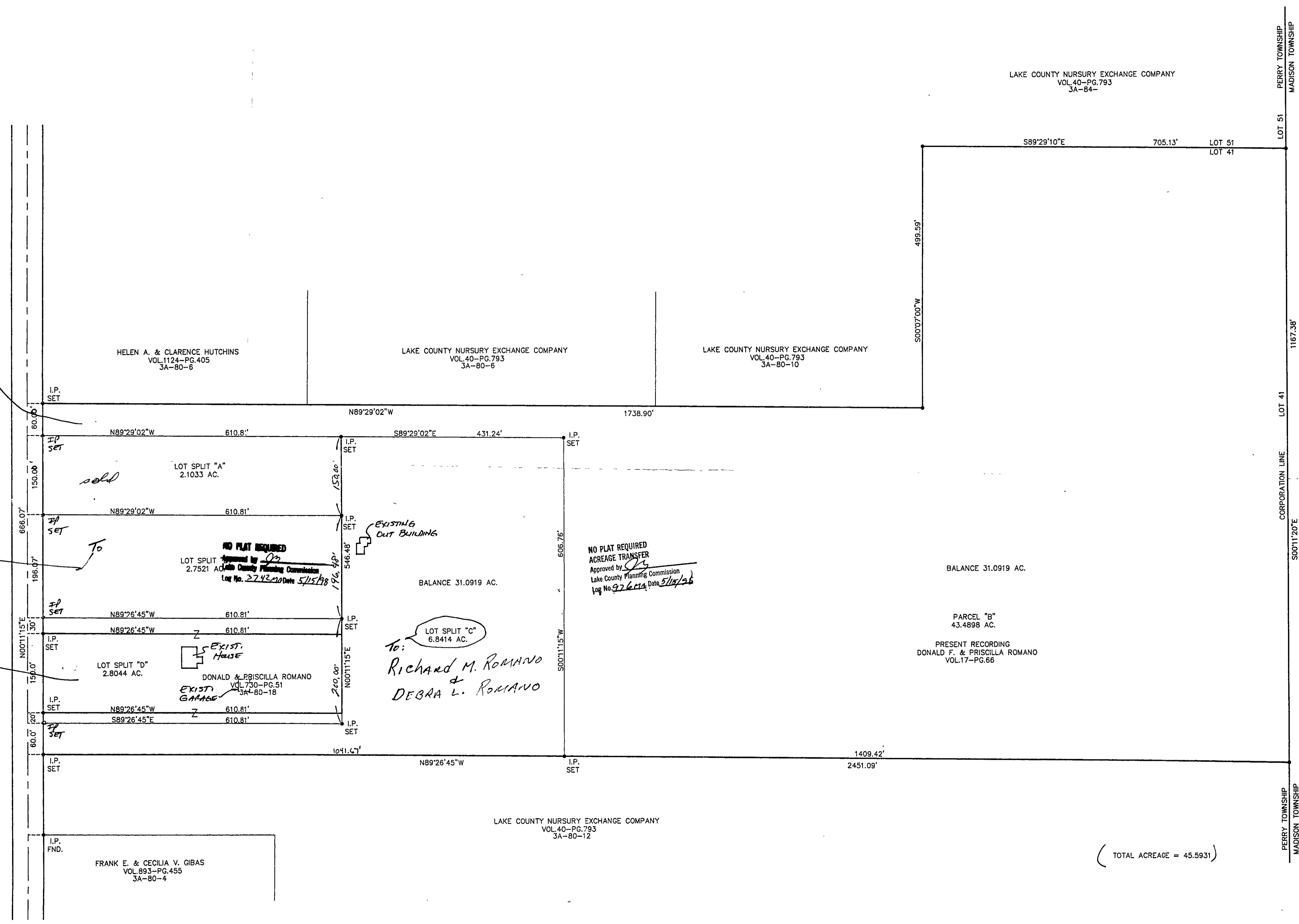


Balance Property to R. Romano 31.0919 Acres
 Turney Road - 60'
 8" to Parcel F + Priscilla Romano
 1/2" to Parcel A + Susan Romano
 Deed



HELEN A. & CLARENCE HUTCHINS
VOL. 1124-PG. 405
3A-80-6

LAKE COUNTY NURSURY EXCHANGE COMPANY
VOL. 40-PG. 793
3A-80-6

LAKE COUNTY NURSURY EXCHANGE COMPANY
VOL. 40-PG. 793
3A-80-10

LOT SPLIT "A"
2.1033 AC.

NO PLAT REQUIRED
ACREAGE TRANSFER
Approved by [Signature]
Lake County Planning Commission
Log No. 2742 Date 5/15/98

NO PLAT REQUIRED
ACREAGE TRANSFER
Approved by [Signature]
Lake County Planning Commission
Log No. 976 Date 5/15/98

LOT SPLIT "C"
6.8414 AC.

To:
Richard M. Romano
&
Debra L. Romano

LOT SPLIT "D"
2.8044 AC.

DONALD & PRISCILLA ROMANO
VOL. 730-PG. 51
3A-80-18

FRANK E. & CECILIA V. GIBAS
VOL. 893-PG. 455
3A-80-4

LAKE COUNTY NURSURY EXCHANGE COMPANY
VOL. 40-PG. 793
3A-80-12

LAKE COUNTY NURSURY EXCHANGE COMPANY
VOL. 40-PG. 793
3A-84-

LOT 51
LOT 41

S000700"W

PERRY TOWNSHIP
MADISON TOWNSHIP

1167.38'

LOT 41

CORPORATION LINE

S001120"E

PERRY TOWNSHIP
MADISON TOWNSHIP

(TOTAL ACREAGE = 45.5931)



REV. NO.	DESCRIPTION	DATE	BY	CHK'D
3742				
976				

babcock BABCOCK, JONES AND ASSOCIATES, INC
CIVIL ENGINEERS - SURVEYORS - LAND PLANNERS
PAINESVILLE OHIO 44077

DATE	4/6/98
DESIGN BY	H.J.
DRAWN BY	T.R.
APPROVED BY	H.J.

LOT SPLIT
FOR
PRICILLA ROMANA
TURNERY ROAD PERRY TWP. LAKE COUNTY

SCALE	1"=100'
JOB NO	98-091
SHEET	OF
1	1