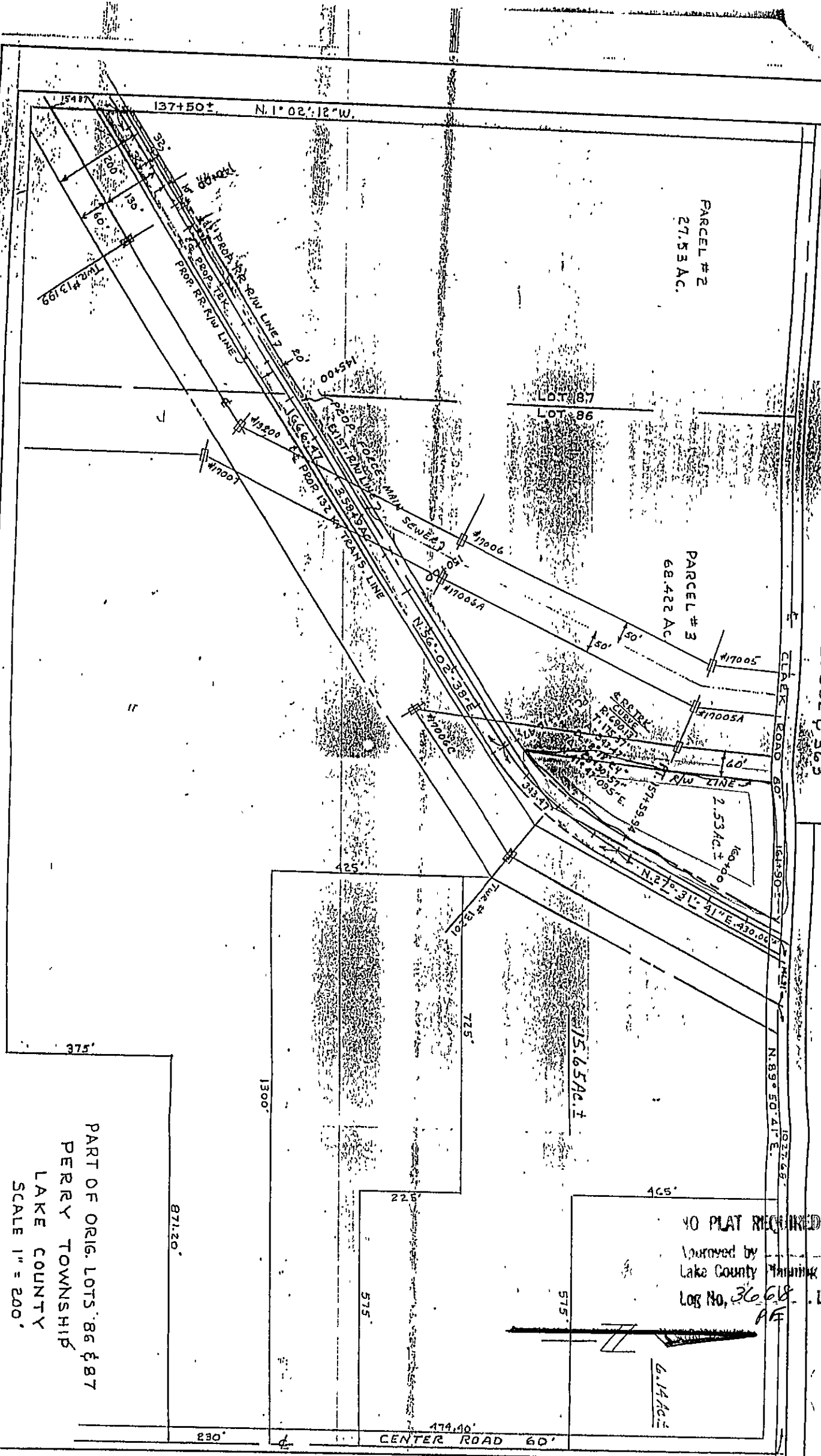


PERRY PLANT TRAIL ROAD SPUR

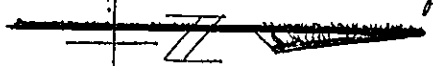
PARCEL NO 31R
 THE CEICO COMPANY VOL. 319 PG. 362 & 363

EXHIBIT A



NO PLAT REQUIRED

Approved by *mn*
 Lake County Planning Commission
 Log No. 3668 Date 6-12-97
 AF



PART OF ORIG. LOTS 86 & 87
 PERRY TOWNSHIP
 LAKE COUNTY
 SCALE 1" = 200'