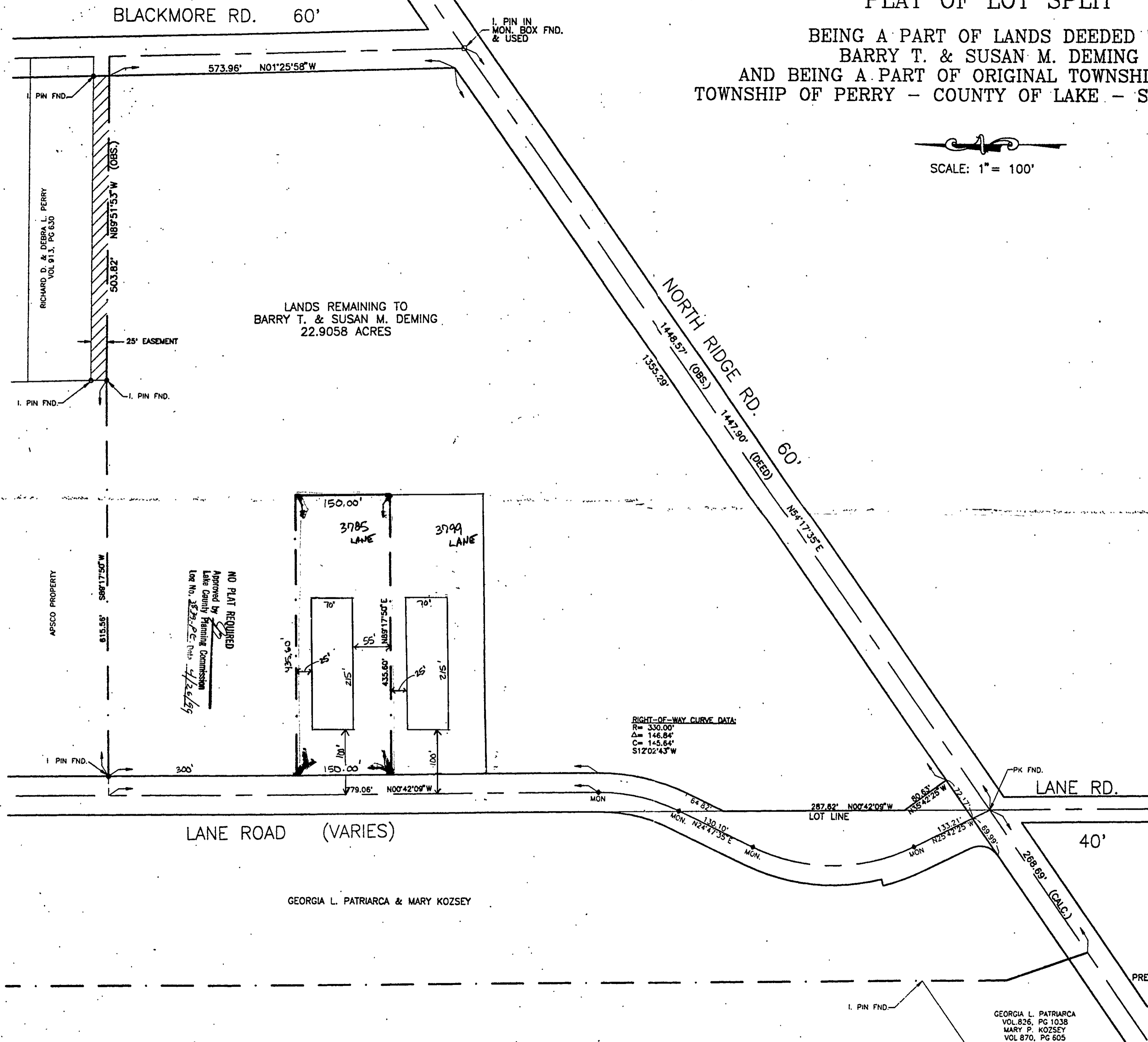
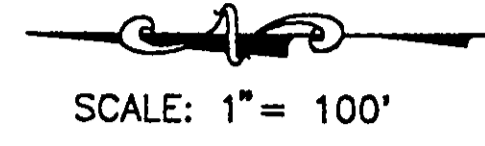


# PLAT OF LOT SPLIT

BEING A PART OF LANDS DEEDED TO  
 BARRY T. & SUSAN M. DEMING  
 AND BEING A PART OF ORIGINAL TOWNSHIP LOT 69  
 TOWNSHIP OF PERRY - COUNTY OF LAKE - STATE OF OHIO



FEB 18 1997

PREPARED BY:  
**OXBOW ENGINEERING, INC.**  
 PROFESSIONAL ENGINEERING  
 &  
 DESIGN SERVICES

GEORGIA L. PATRIARCA  
 VOL. 826, PG 1038  
 MARY P. KOZSEY  
 VOL. 870, PG 605