

LOT SPLIT PLAT
for
MIDDLE RIDGE ROAD

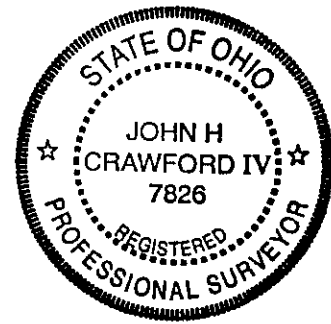
Known as being a part of Cowles Lot Tract No. 2,

TOWNSHIP OF MADISON
COUNTY OF LAKE - STATE OF OHIO

by
McSTEEN & ASSOCIATES, INC.
ENGINEERS & SURVEYORS
26451 Curtiss Wright Parkway
Richmond Heights, Ohio 44143
(216) 797-9800

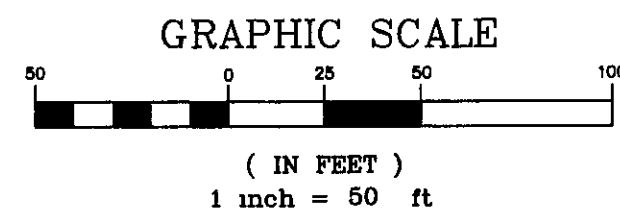
Bearings shown hereon are to an assumed meridian and are used to denote angles only. Distances are given in feet and decimal parts thereof. All iron pins shown as set are 30" long 1/2" rebar with an identification cap stamped "McSteen & Assoc."

John H. Crawford IV
11-14-2000
John H. Crawford IV, Registered Professional Surveyor No. 7826
Job No. 00-256



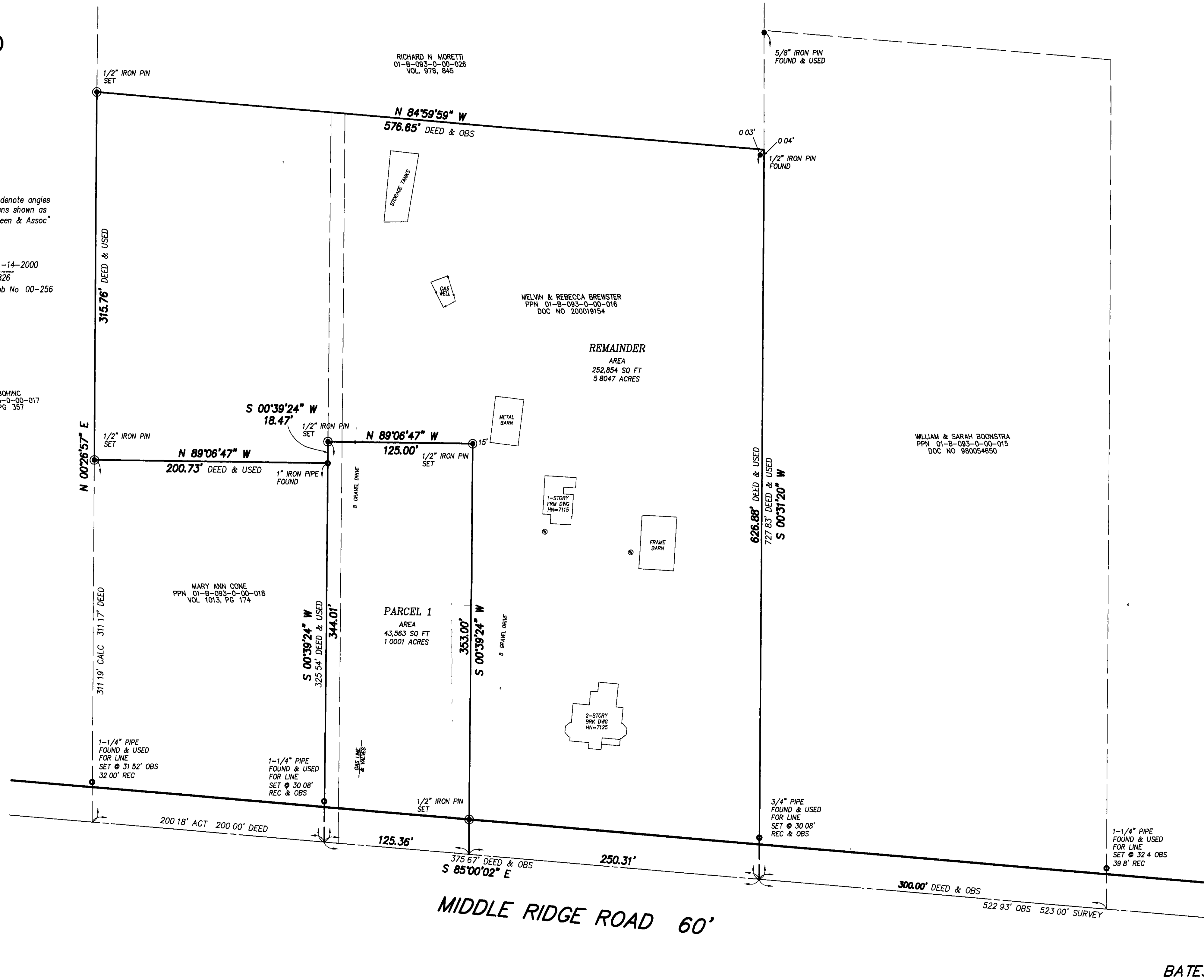
ROSE M. BOHING
PPN 01-B-093-0-00-017
VOL. 421, PG. 357

NORTH



LEGEND

- UTILITY POLE
- ☆ LIGHT POLE
- CLEAN OUT
- ⊗ WATER VALVE
- ⊕ WATER METER
- ⊖ GAS VALVE
- ⊙ GAS METER
- ⊠ AIR CONDITIONING UNIT
- ⊡ TRAFFIC CONTROL BOX
- ⊞ CATCH BASIN
- STORM MANHOLE
- SANITARY MANHOLE
- ⊕ HYDRANT
- ⊖ SIGN
- ⊙ BORING
- ⊗ WATER WELL



BATES ROAD