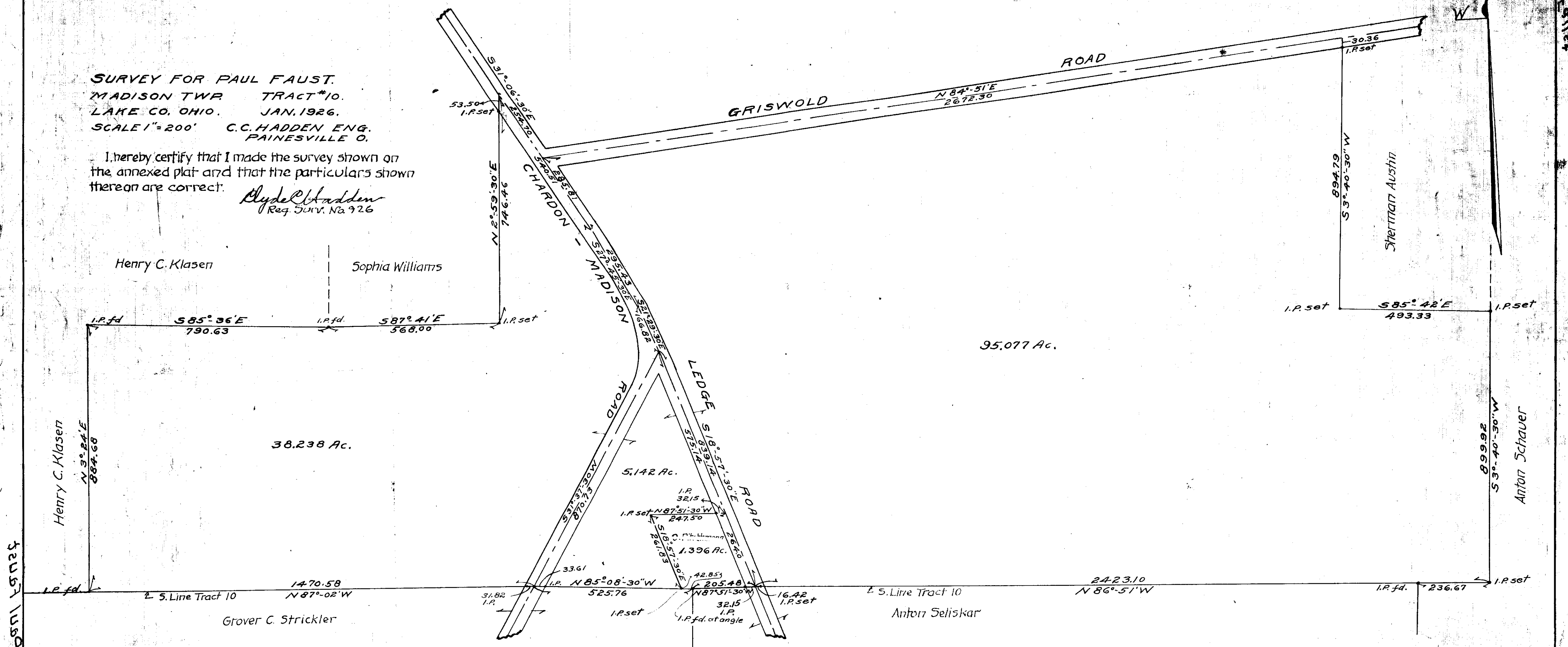


SURVEY FOR PAUL FAUST.
MADISON TWP. TRACT #10.
LAKE CO. OHIO. JAN. 1926.
SCALE 1"=200' C.C. HADDEN ENG.
PAINESVILLE O.

I hereby certify that I made the survey shown on
the annexed plat and that the particulars shown
thereon are correct.

Clyde C. Hadden
Reg. Surv. No. 926



Henry C. Klasen
 585° 36' E 790.63
 587° 41' E 568.00

38.238 Ac.

Henry C. Klasen
 N 3° 24' E 884.68

Sophia Williams

N 2° 59' 30" E 746.46

95.077 Ac.

5.142 Ac.

1470.58
 N 87° 02' W
 Grover C. Strickler

N 87° 51' 30" W 247.50
 I.P. set

1.396 Ac.

2423.10
 N 86° 51' W
 Anton Seliskar

42.85
 205.48
 N 87° 51' 30" W
 I.P.
 I.P. fd. at angle

585° 42' E 493.33
 I.P. set

899.92
 S 3° 40' 30" W
 Anton Schauer

894.79
 S 3° 40' 30" W
 Sherman Austin

ROAD

GRISWOLD

CHARDON

MADISON

LEDGE

ROAD

S. Line Tract 10

W

5255 1350

4255 1350