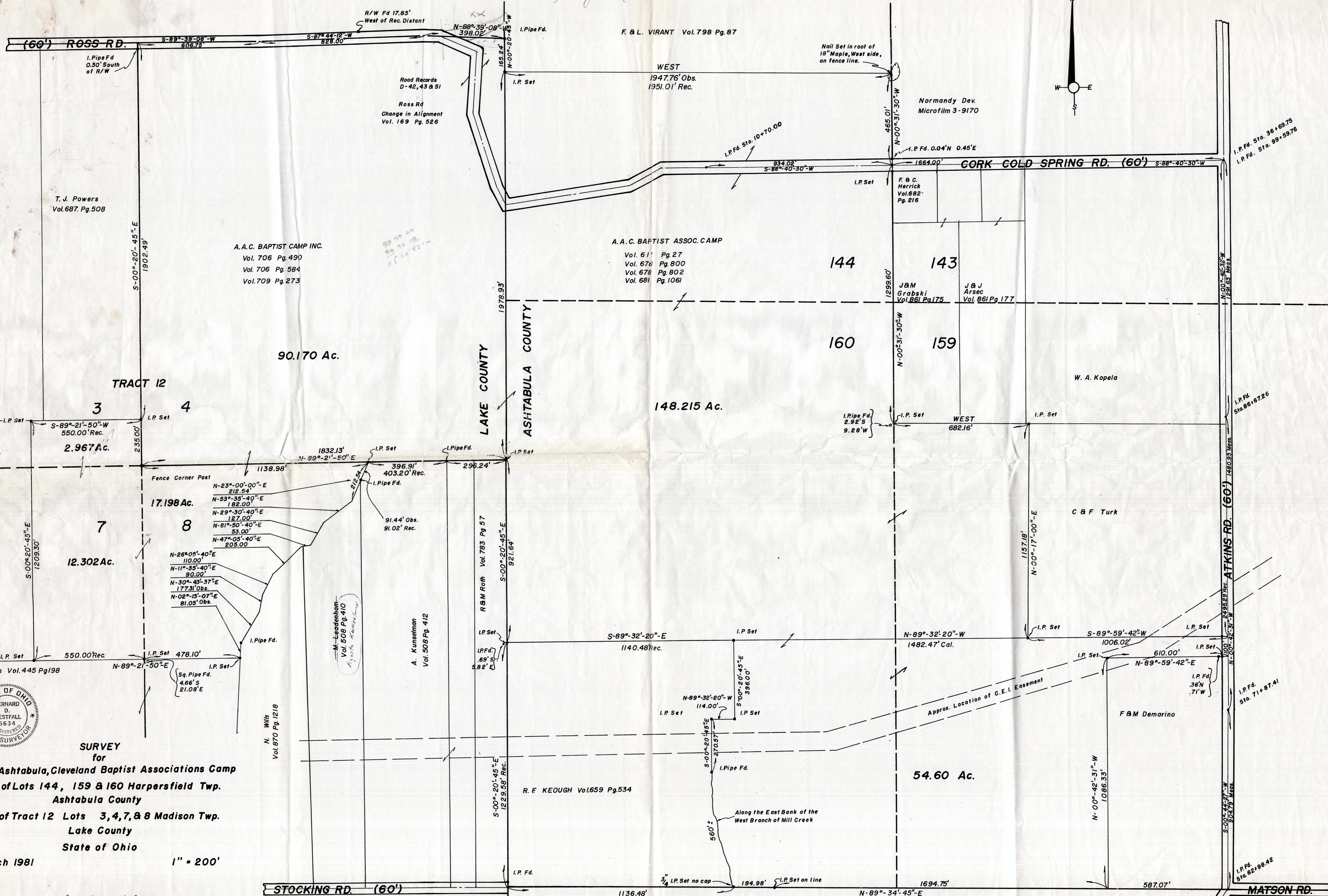


Robert J. May Roth



C & M Hammel
Vol. 670 Pg. 213

T. J. Powers
Vol. 687 Pg. 508

A. A. C. BAPTIST CAMP INC.
Vol. 706 Pg. 490
Vol. 706 Pg. 584
Vol. 709 Pg. 273

A. A. C. BAPTIST ASSOC. CAMP
Vol. 611 Pg. 27
Vol. 678 Pg. 800
Vol. 678 Pg. 802
Vol. 681 Pg. 1061

F. B. C. Herrick
Vol. 682
Pg. 216

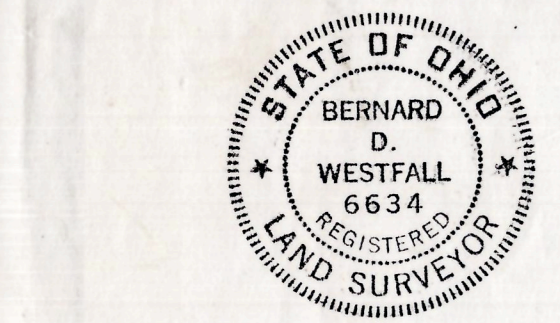
J & M Grabski
Vol. 661 Pg. 175

J & J Arsec
Vol. 661 Pg. 177

G & E Kuharick
Vol. 814 Pg. 958

L. Zielinski
Vol. 508 Pg. 228

C & M Talkington Vol. 445 Pg. 198



SURVEY
for
Akron, Ashtabula, Cleveland Baptist Associations Camp
Part of Lots 144, 159 & 160 Harpersfield Twp.
Ashtabula County
Part of Tract 12 Lots 3, 4, 7, & 8 Madison Twp.
Lake County
State of Ohio
March 1981

Bernard D. Westfall P.S.
BERNARD D. WESTFALL, P.S. 6634
A TERRA SURVEY CO.
Jefferson Ohio

GEAUGA COUNTY

TRUMBULL TWP