

1795 - 1
File A-2-b

WESTLAWN SUBDIVISION
PAINESVILLE OHIO

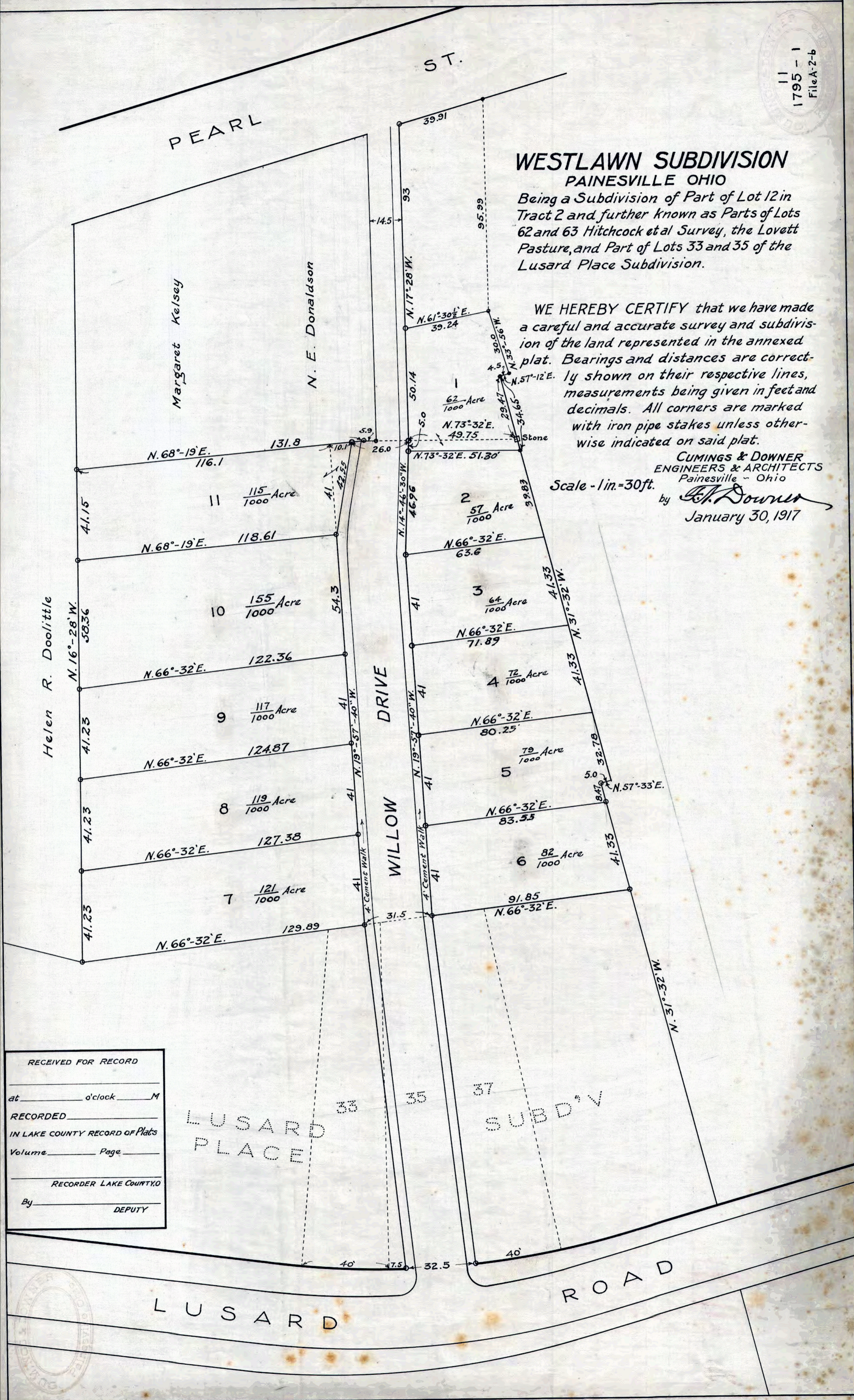
Being a Subdivision of Part of Lot 12 in Tract 2 and further known as Parts of Lots 62 and 63 Hitchcock et al Survey, the Lovett Pasture, and Part of Lots 33 and 35 of the Lusard Place Subdivision.

WE HEREBY CERTIFY that we have made a careful and accurate survey and subdivision of the land represented in the annexed plat. Bearings and distances are correctly shown on their respective lines, measurements being given in feet and decimals. All corners are marked with iron pipe stakes unless otherwise indicated on said plat.

CUMINGS & DOWNER
ENGINEERS & ARCHITECTS
Painesville - Ohio

Scale - 1 in. = 30 ft.

by *E. J. Downer*
January 30, 1917



RECEIVED FOR RECORD

at _____ o'clock _____ M

RECORDED

IN LAKE COUNTY RECORD OF Plats

Volume _____ Page _____

RECORDER LAKE COUNTY, O

By _____ DEPUTY

LUSARD PLACE

SUBD'V

LUSARD

ROAD

