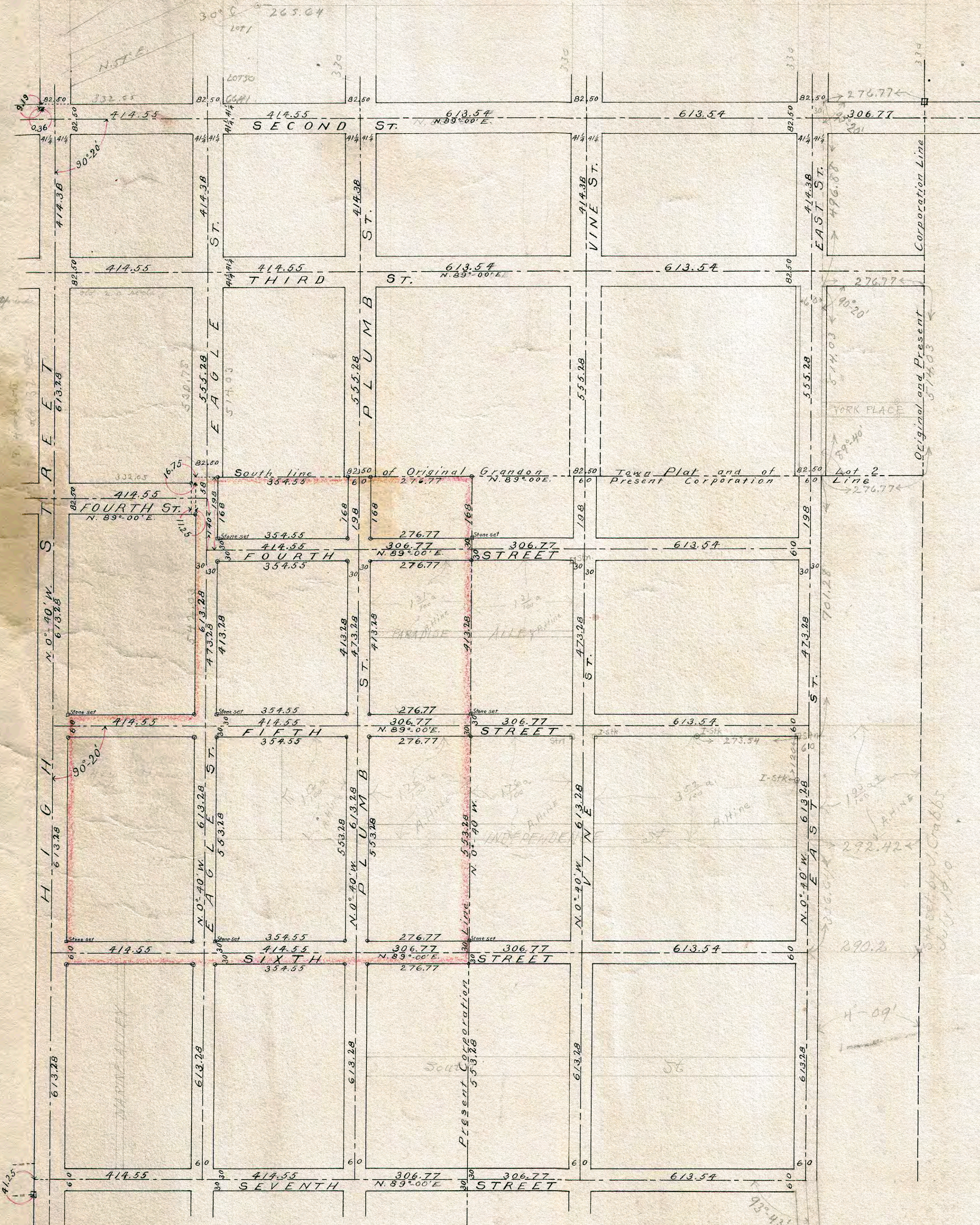


MAP OF PART OF THE  
VILLAGE OF FAIRPORT.



The map shows a grid of streets including Second, Third, Fourth, Fifth, Sixth, and Seventh Streets running east-west, and Elm, Plum, and Vine Streets running north-south. A prominent feature is the 'South line of Original Grant' and 'Taxa Plat and of Present Corporation' which runs through the center of the map. The map includes various lot numbers, street widths, and bearings. Key annotations include '90°20'' angles, bearings like 'N. 89°00' E.', and distances such as '613.54' and '306.77'. There are also handwritten notes and signatures, including 'H.P. G... Civil Engineer' and 'H-09'.

H.P. G... Civil Engineer

H-09  
 H.P.G.