

Stake found

N. 0° - 56' W. 615.0

Stake found

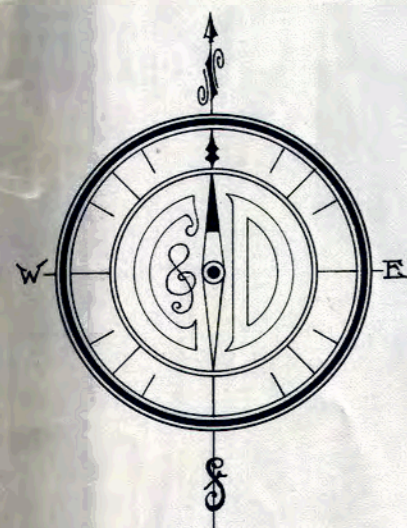
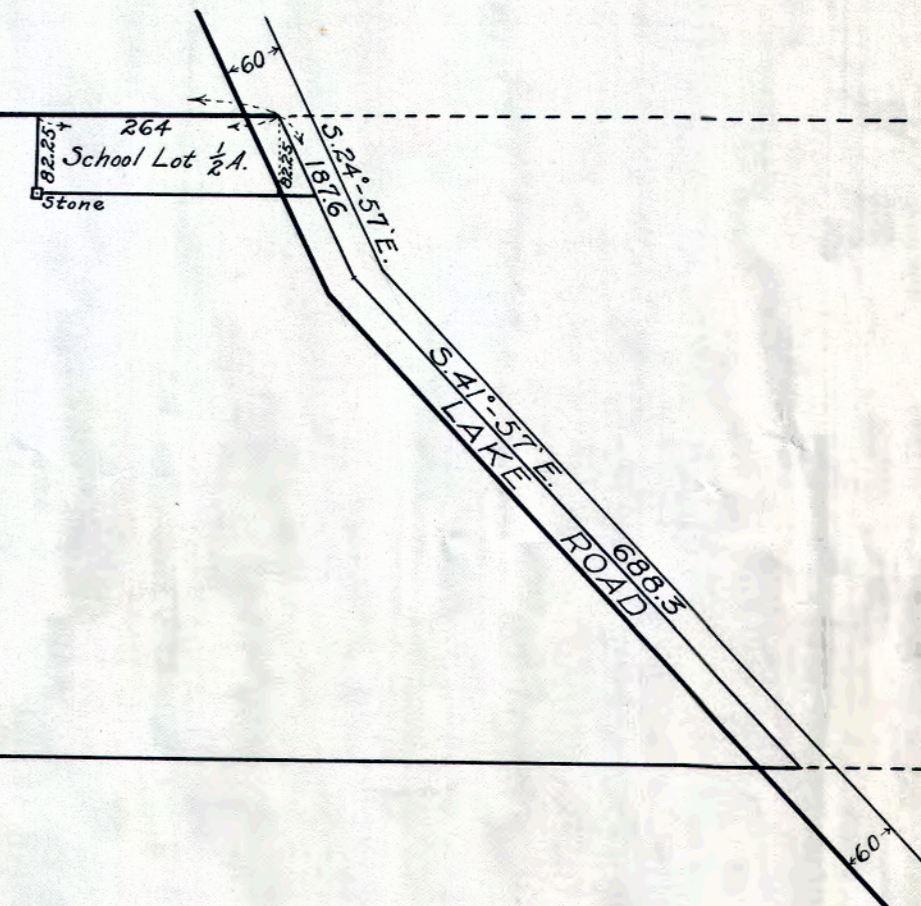
S. 89° - 11' E.

4177.0

64 <sup>64</sup>/<sub>100</sub> ACRES - Exclusive of School Lot.

S. 88° - 30' E.

4705.6



PART OF LOT 4, THE GORE  
WILLOUGHBY TWP.,  
OHIO

Scale, 1 inch = 200 feet  
- Surveyed Dec. 11, 1901  
by H. P. Cumings -

CUMINGS & DOWNER -  
- CIVIL AND LANDSCAPE ENGINEERS -  
- ARCHITECTS -  
Painesville - Ohio -