

# L A K E E R I E

114  
1928-1  
E.P. 2

SVRVEY AND PLAT OF  
PART OF LOT 1, TRACT 4 OF PAINESVILLE TWP.  
FAIRPORT VILLAGE  
OHIO

We hereby certify the annexed plat to be a correct representation  
of a careful & accurate survey made by us August 9th 1910.

*Dumingo & Dorman*  
Civil Engrs. & Surveyors.  
Painesville, Ohio, Feb. 15, 1911.

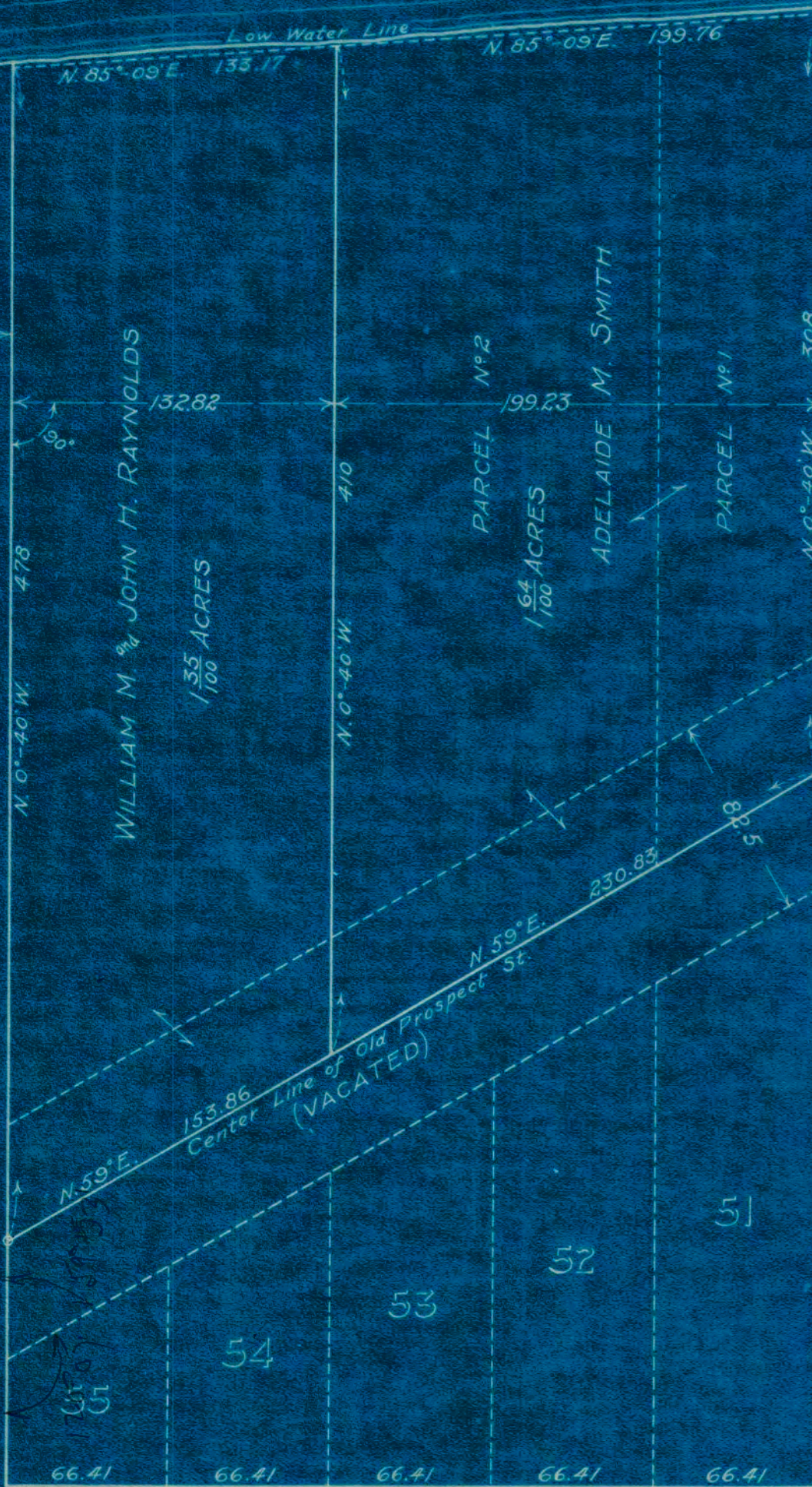
HIGH ST.

ST.

EAGLE

SECOND ST.

NOTE  
There is a surplus of 205 ft.  
in the block from High Street to  
Eagle Street which surplus has  
been divided proportionately between  
the parcels.



Scale, 1 in. = 60 ft.