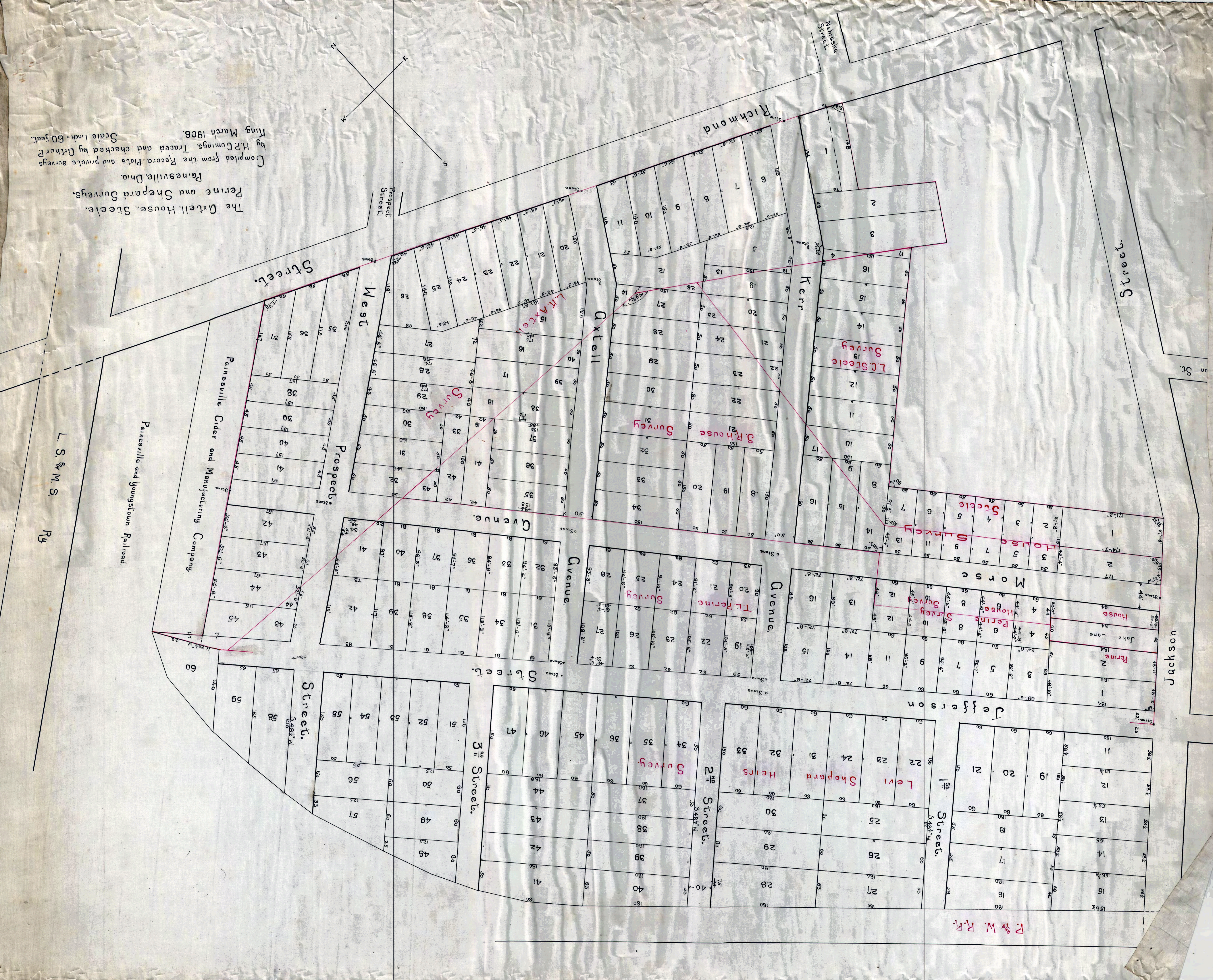
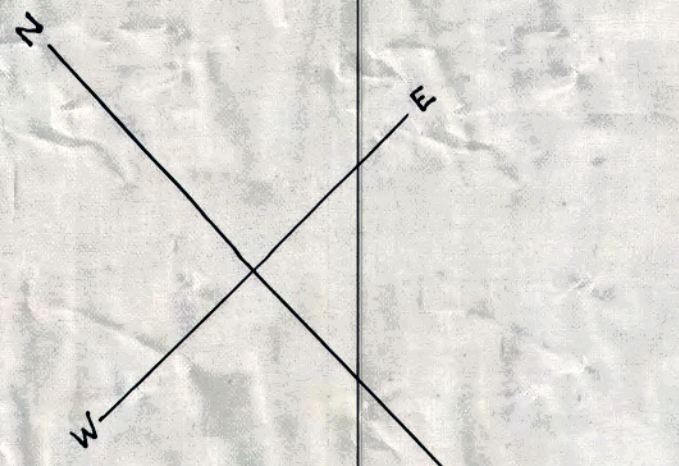


The Gtcell, House, Steele,
 Ferine and Shepard Surveys,
 Painesville, Ohio.
 Compiled from the Record Plats and private surveys
 by H.P. Cummings. Traced and checked by Arthur P.
 King, March 1906.
 Scale 1 inch = 60 feet.



Painesville and Youngstown Railroad

Painesville Cider and Manufacturing Company

L. S. & M. S. Ry.

R^d W. R. R.