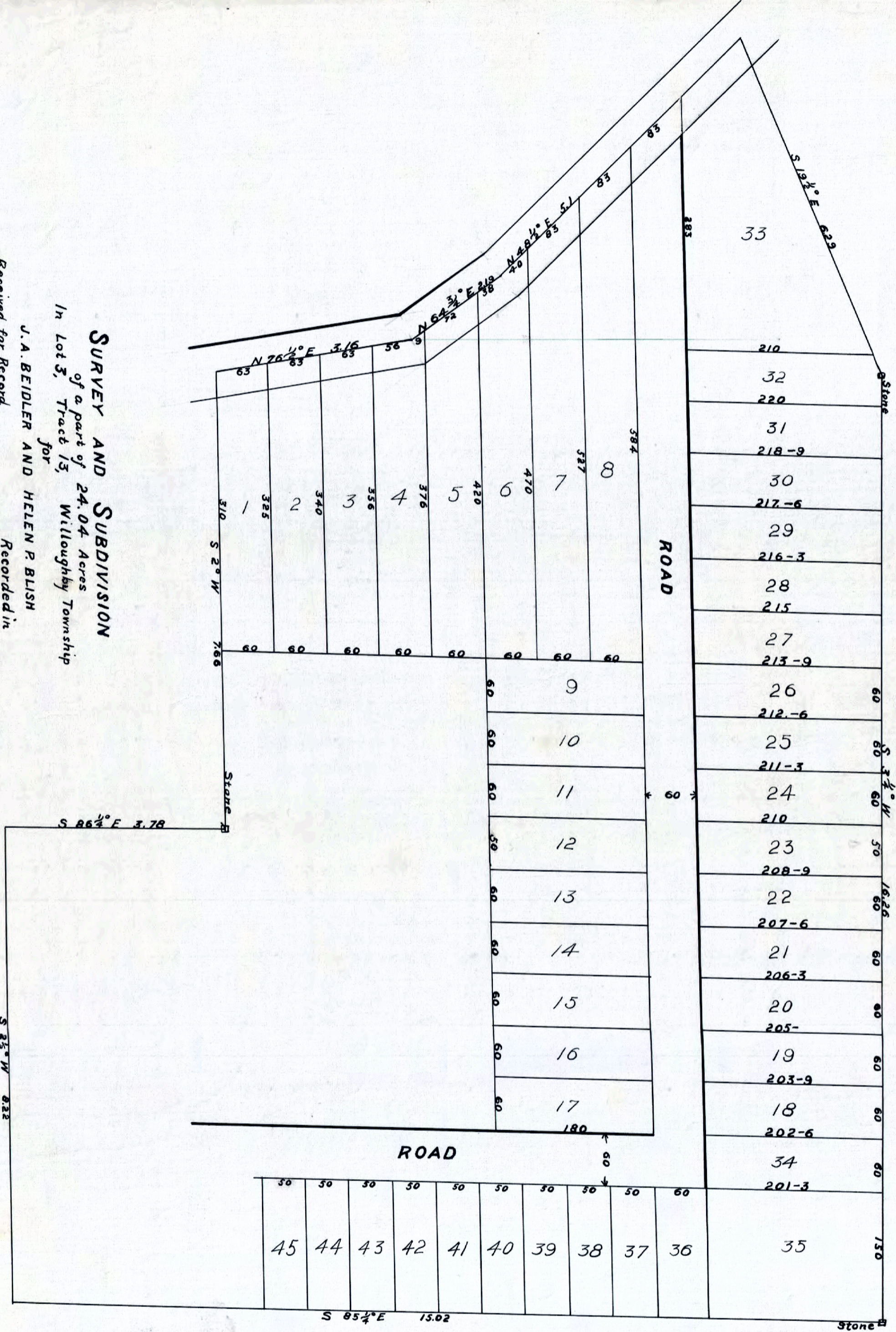


SURVEY AND SUBDIVISION
of a part of 24.04 Acres
In Lot 3, Tract 13, Willoughby Township
for
J. A. BEIDLER AND HELEN P. BLISH

Received for Record
Feb. 23, 1894
Recorded in
Portfolio of Plats A page 61
H. N. Munson, County Surveyor



1656-1
D-2C