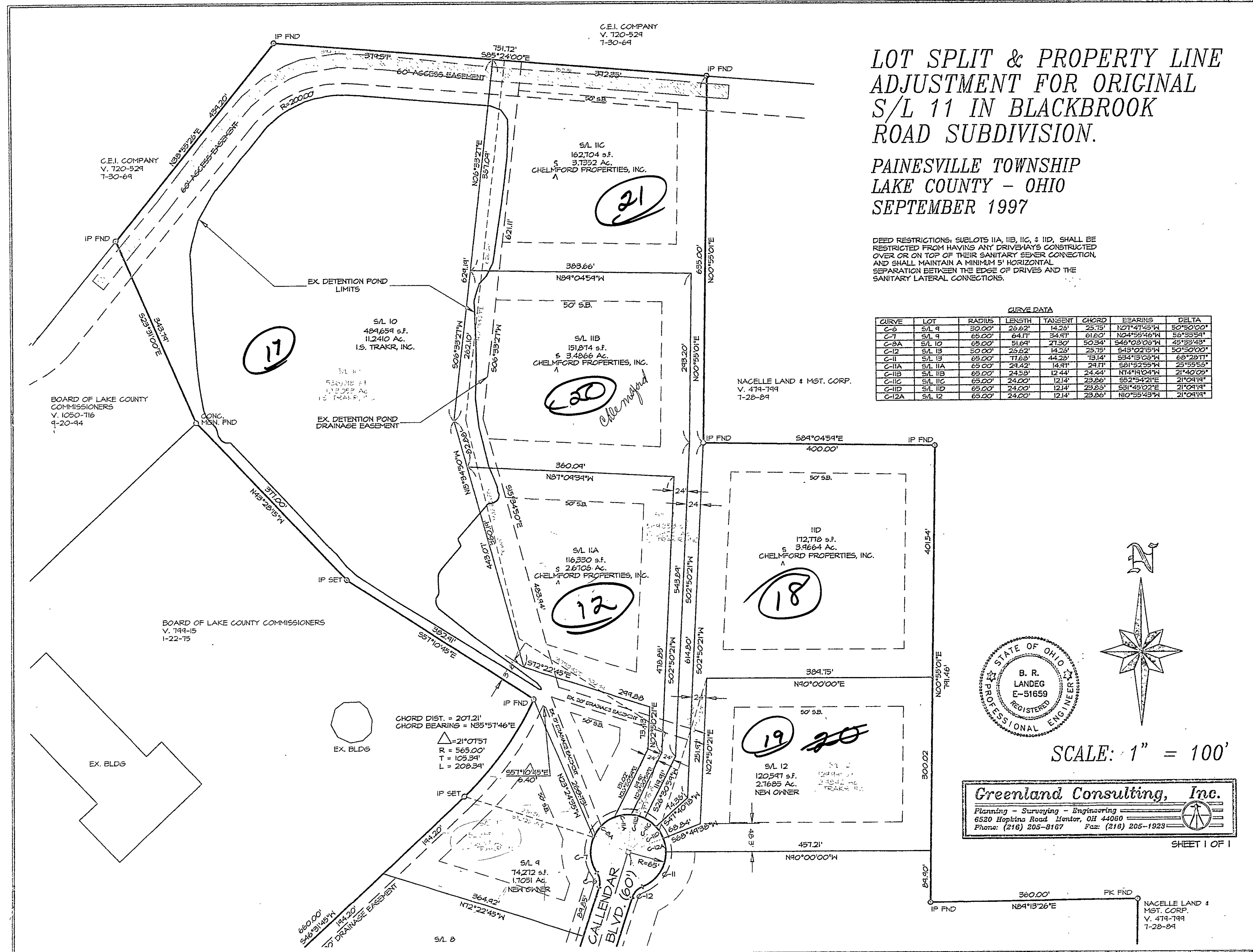


LOT SPLIT & PROPERTY LINE ADJUSTMENT FOR ORIGINAL S/L 11 IN BLACKBROOK ROAD SUBDIVISION.

PAINESVILLE TOWNSHIP
LAKE COUNTY - OHIO
SEPTEMBER 1997

DEED RESTRICTIONS: SUBLOTS 11A, 11B, 11C, & 11D, SHALL BE RESTRICTED FROM HAVING ANY DRIVEWAYS CONSTRUCTED OVER OR ON TOP OF THEIR SANITARY SEWER CONNECTION, AND SHALL MAINTAIN A MINIMUM 5' HORIZONTAL SEPARATION BETWEEN THE EDGE OF DRIVES AND THE SANITARY LATERAL CONNECTIONS.

CURVE DATA						
CURVE	LOT	RADIUS	LENGTH	TANGENT	CHORD	BEARINGS
C-3	S/L 4	50.00'	29.62'	14.25'	25.15'	N01°47'45"W
C-7	S/L 4	65.00'	64.11'	34.91'	61.60'	N04°55'46"W
C-8A	S/L 10	65.00'	51.84'	21.30'	50.34'	S46°03'05"W
C-12	S/L 12	65.00'	29.62'	14.25'	25.15'	S43°02'15"W
C-11	S/L 12	65.00'	11.65'	44.25'	18.14'	S34°13'05"W
C-11A	S/L 11A	65.00'	24.42'	14.91'	24.11'	S01°52'55"W
C-11B	S/L 11B	65.00'	24.53'	12.44'	24.64'	N74°14'01"W
C-11C	S/L 11C	65.00'	24.00'	12.14'	23.86'	S52°54'21"E
C-11D	S/L 11D	65.00'	24.00'	12.14'	23.86'	S51°49'02"E
C-12A	S/L 12	65.00'	24.00'	12.14'	23.86'	N10°55'45"W



Real est expenses
 3,966.4 - 11D
 2,768.5 - 11C 12
 3,486.6 - 11B
 3,735.2 - 11C
 2,670.6 - 11A
 Chelms
 Chelms
 Chelms
 Chelms

11, 2411
 Mar & Sweeney

11B-3584