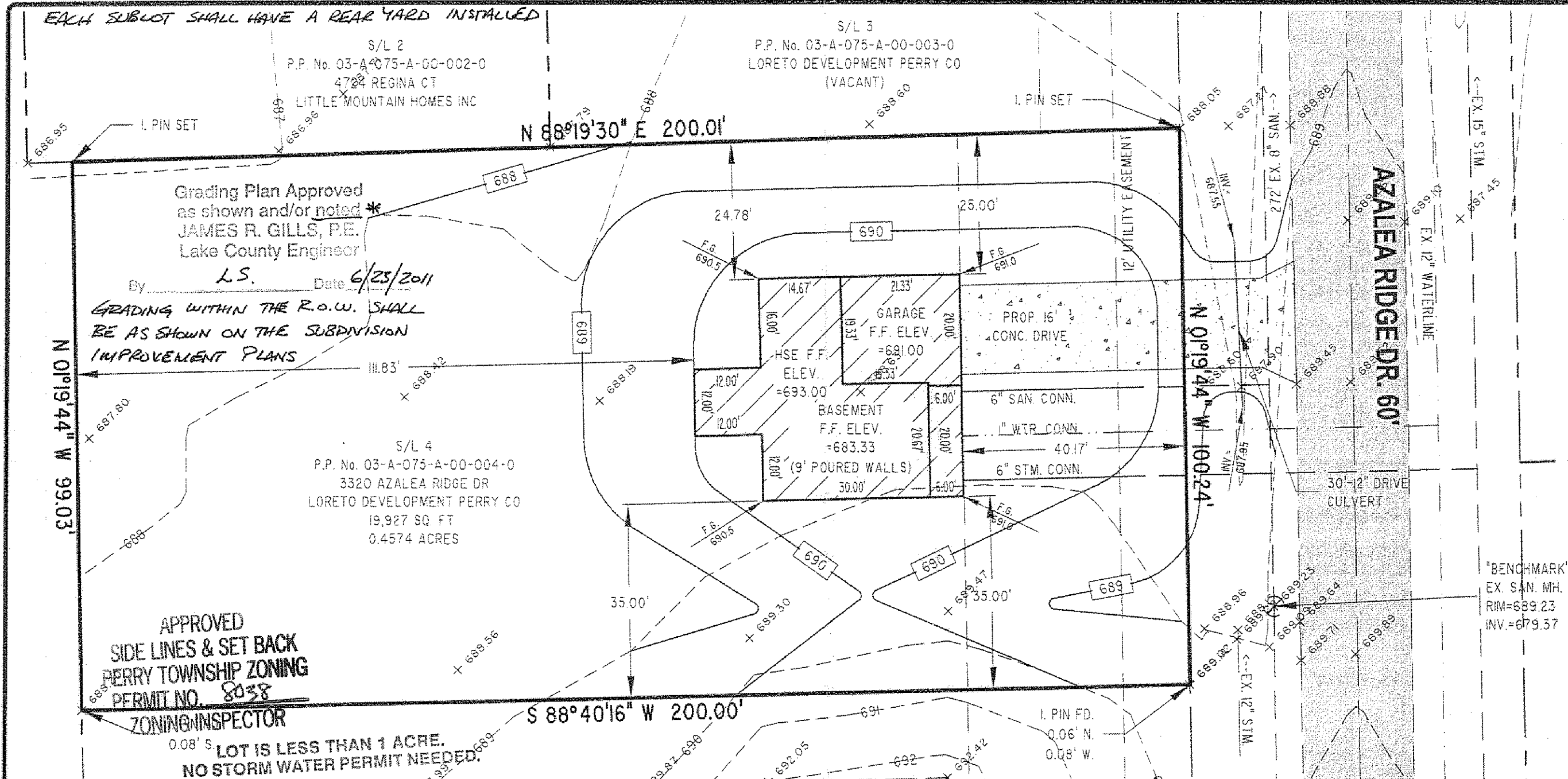


\* SEE DECLARATION OF COVENANTS & RESTRICTIONS SECT. 19 YARD DRAWS

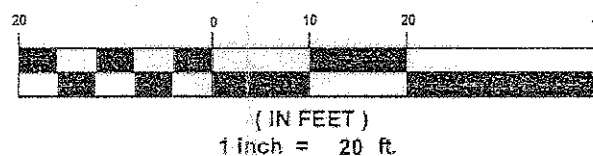
EACH SUBLOT SHALL HAVE A REAR YARD INSTALLED



#### GENERAL NOTES:

1. BENCHMARK - RIM OF SANITARY MANHOLE LOCATED IN FRONT OF SUBLOT 4, ELEVATION = 689.23.
2. DRIVEWAY APRON TO BE 6" THICK CONCRETE.
3. ALL DOWNSPOUTS TO BE OUTLETED TO SPLASH BLOCKS.
4. CONTRACTOR RESPONSIBLE FOR CONTACTING THE OHIO UTILITY PROTECTION SERVICE (1.800.362.2764) AND ALL UTILITY COMPANIES A MINIMUM OF 48 HOURS PRIOR TO CONSTRUCTION.
5. THE LOCATION BOTH HORIZONTAL AND VERTICAL OF EXISTING UNDERGROUND UTILITIES SHOWN HEREON, HAVE BEEN OBTAINED BY A DILIGENT AND COMPREHENSIVE SEARCH OF AVAILABLE RECORDS. VERIFICATION BY FIELD OBSERVATION HAS BEEN CONDUCTED WHERE PRACTICAL, HOWEVER, BARRINGTON CONSULTING GROUP, INC. DOES NOT GUARANTEE THE COMPLETENESS, NOR ACCURACY THEREOF.
6. CONTRACTOR SHALL VERIFY ELEVATIONS OF LATERAL INVERTS IN THE FIELD PRIOR TO FOUNDATION EXCAVATION.
7. SEE SHEET 2 FOR EROSION AND SEDIMENT-CONTROL PLAN
8. SEE SHEET 2 FOR SEEDING INFORMATION
9. THE DITCH BETWEEN THE EDGE OF ROAD AND RIGHT OF WAY SHALL BE MAINTAINED AND MAY NOT BE FILLED IN. ANY DRIVE CULVERTS NEEDED SHOULD BE ENCASED IN CONCRETE AS PER SUBDIVISION PLANS.

#### GRAPHIC SCALE



#### CERTIFICATION:

"I THE UNDERSIGNED HEREBY CERTIFIES THAT THIS TOPOGRAPHY INDICATED BY 1 FOOT CONTOURS AND ELEVATION SHOWN HEREON REPRESENTS AN ACTUAL SURVEY MADE BY ME ON THE 14th DAY OF JUNE, 2011 AND THE ELEVATIONS WERE TAKEN AT AN APPROPRIATE INTERVAL AND AS OF THAT DAY THEY EXISTED AS INDICATED HEREON.

"I HEREBY CERTIFY THAT THIS PLAN WAS PREPARED BY ME AND IS CORRECT TO THE BEST OF MY KNOWLEDGE AND BELIEF"

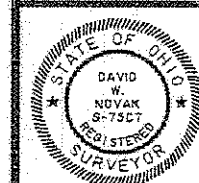
DAVID W. NOVAK, P.S. No. 7507

CERT-1000

11042-004

REVISIONS	BY

**Barrington**  
CONSULTING GROUP, INC.  
9114 TYLER BLVD., MENTOR, OHIO 44060  
PHONE 440.205.1260 FAX 440.205.1262  
www.barringtoncgl.com



**SITE PLAN**  
3320 AZALEA RIDGE DR., PERRY TWP., OHIO 44081  
S/L 4 AZALEA RIDGE SUBDIVISION VOL. 52 PG. 25  
B.R. KNEZ CONSTRUCTION, INC.

DATE	JUNE 15, 2011
SCALE	1" = 20'
JOB NO.	11042-004
SHEET	1/2