



Grading Plan Approved  
as shown and/or noted  
JAMES R. GILLS, P.E.  
Lake County Engineer

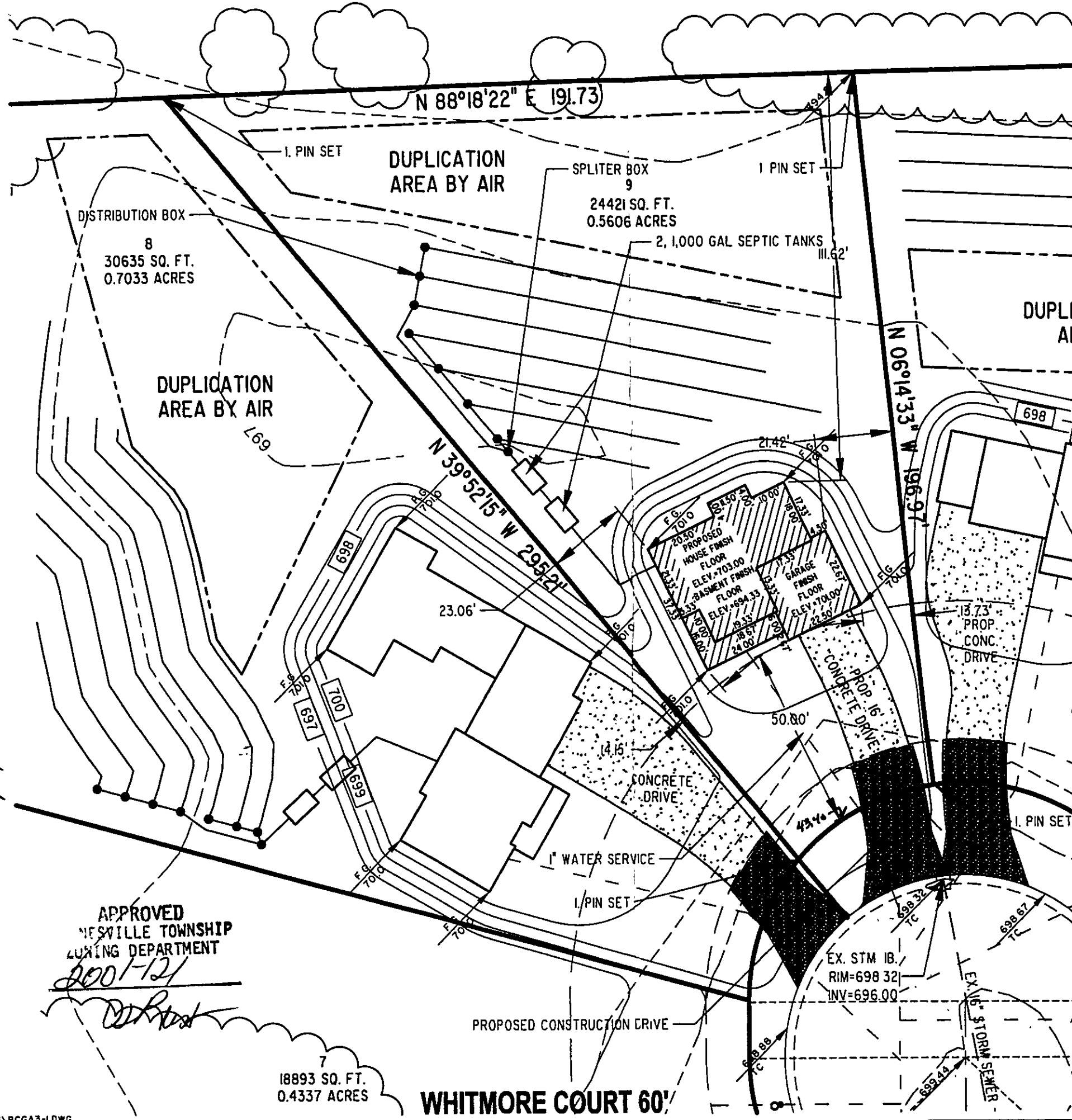
By JAM Date 5/10/01

APPROVED  
NESVILLE TOWNSHIP  
ZONING DEPARTMENT

2001-121  
[Signature]

7  
18893 SQ. FT.  
0.4337 ACRES

WHITMORE COURT 60'



# GENERAL NOTES:

1. BENCHMARK - TOP STEM OF EXISTING FIRE HYDRANT LOCATED IN FRONT SUBLOT 5, ELEVATION = 703.57.
2. DRIVEWAY APRON TO BE 6" THICK CONCRETE.
3. ALL DOWNSPOUTS TO BE OUTLETED TO SPLASH BLOCKS.
4. CONTRACTOR RESPONSIBLE FOR CONTACTING THE OHIO UTILITY PROTECTION SERVICE (1.800.362.2764) AND ALL UTILITY COMPANIES A MINIMUM OF 48 HOURS PRIOR TO CONSTRUCTION.
5. THE LOCATION BOTH HORIZONTAL AND VERTICAL OF EXISTING UNDERGROUND UTILITIES SHOWN HEREON, HAVE BEEN OBTAINED BY A DILIGENT AND COMPREHENSIVE SEARCH OF AVAILABLE RECORDS. VERIFICATION BY FIELD OBSERVATION HAS BEEN CONDUCTED WHERE PRACTICAL, HOWEVER, BARRINGTON CONSULTING GROUP, INC. DOES NOT GUARANTEE THE COMPLETENESS, NOR ACCURACY THEREOF.
6. CONTRACTOR SHALL VERIFY ELEVATIONS OF LATREAL INVERTS IN THE FIELD PRIOR TO FOUNDATION EXCAVATION.
7. EROSION AND SEDIMENT-CONTROL PRACTICES TO BE INSTALLED AS DESCRIBED IN THE RAIN WATER LAND DEVELOPMENT MANUAL AS DIRECTED BY THE LAKE COUNTY SOIL AND WATER CONSERVATION DISTRICT.
8. TEMPORARY SEEDING SHALL BE APPLIED ON ALL DISTURBED SOIL THAT WILL NOT BE REWORKED FOR WITHIN 30 DAYS. THESE IDE AREAS TO BE SEEDDED WITHIN 7 DAYS.

## CERTIFICATION :

"I THE UNDERSIGNED HEREBY CERTIFIES THAT THIS TOPOGRAPHY INDICATED BY 1 FOOT CONTOURS AND ELEVATION SHOWN HEREON REPRESENTS AN ACTUAL SURVEY MADE BY ME ON THE 7th DAY OF JULY, 2000 AND THE ELEVATIONS WERE TAKEN AT AN APPROPRIATE INTERVAL AND AS OF THAT DAY THEY EXISTED AS INDICATED HEREON.

"I HEREBY CERTIFY THAT THIS PLAN WAS PREPARED BY ME AND IS CORRECT TO THE BEST OF MY KNOWLEDGE AND BELIEF"

[Signature]  
DAVID W. NOVAK, P.S. No. 7507

CERT-1.DWG

00039-9

REVISIONS	DATE	BY	APP'D

**Barrington**  
CONSULTING GROUP, INC.  
38342 WESTERN PARKWAY, SUITE 10  
WILLOUGHBY, OHIO 44094  
PHONE 440.946.1761 FAX 440.918.9486



**SITE PLAN**  
SUBLOT 9, WHITMORE COURT, PAINESVILLE TWP.  
WHITMORE SUBDIVISION

LITTLE MOUNTAIN HOMES, INC.

DRAWN D.W. NOVAK	CHECKED DWN
DATE MAY 7, 2001	SCALE 1" = 30'
JOB NO. 00039-9	SHEET 1/2
OF	SHEETS