

REVISIONS	BY

Barrington
CONSULTING GROUP, INC.
9114 TYLER BLVD., MENTOR, OHIO 44060
PHONE 440.265.1260 FAX 440.265.1262
www.BarringtonCGI.com



SITE PLAN
S/L 54 WATERFRONT PL., PAINESVILLE TWP., OHIO 44077
NORTH SHORE ESTATES VOL. 50 PG. 5

NOSTALGIA HOMES

WSD
CHECKED
DWN
DATE
OCT 15, 2008
SCALE
1" = 20'
JOB NO.
05138-054
SHEET
1/2
OF SHEETS

GENERAL NOTES:

1. BENCHMARK - TOP STEM OF EXISTING FIRE HYDRANT LOCATED IN FRONT SUBLT 55, ELEVATION = 622.23.
2. DRIVEWAY APRON TO BE 6" THICK CONCRETE.
3. ALL DOWNSPOUTS TO BE OUTLETED TO SPLASH BLOCKS.
4. CONTRACTOR RESPONSIBLE FOR CONTACTING THE OHIO UTILITY PROTECTION SERVICE (1.800.362.2784) AND ALL UTILITY COMPANIES A MINIMUM OF 48 HOURS PRIOR TO CONSTRUCTION.
5. THE LOCATION BOTH HORIZONTAL AND VERTICAL OF EXISTING UNDERGROUND UTILITIES SHOWN HEREON, HAVE BEEN OBTAINED BY A DILIGENT AND COMPREHENSIVE SEARCH OF AVAILABLE RECORDS. VERIFICATION BY FIELD OBSERVATION HAS BEEN CONDUCTED WHERE PRACTICAL, HOWEVER, BARRINGTON CONSULTING GROUP, INC. DOES NOT GUARANTEE THE COMPLETENESS, NOR ACCURACY THEREOF.
6. CONTRACTOR SHALL VERIFY ELEVATIONS OF LATERAL INVERTS IN THE FIELD PRIOR TO FOUNDATION EXCAVATION.
7. SEE SHEET 2 FOR EROSION AND SEDIMENT-CONTROL PLAN
8. SEE SHEET 2 FOR SEEDING INFORMATION

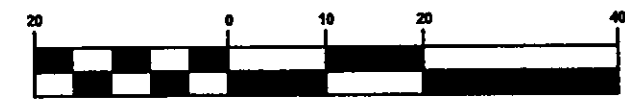
CERTIFICATION :

"I THE UNDERSIGNED HEREBY CERTIFIES THAT THIS TOPOGRAPHY INDICATED BY 1 FOOT CONTOURS AND ELEVATION SHOWN HEREON REPRESENTS AN ACTUAL SURVEY MADE BY ME ON THE 14th DAY OF OCTOBER, 2008 AND THE ELEVATIONS WERE TAKEN AT AN APPROPRIATE INTERVAL AND AS OF THAT DAY THEY EXISTED AS INDICATED HEREON.

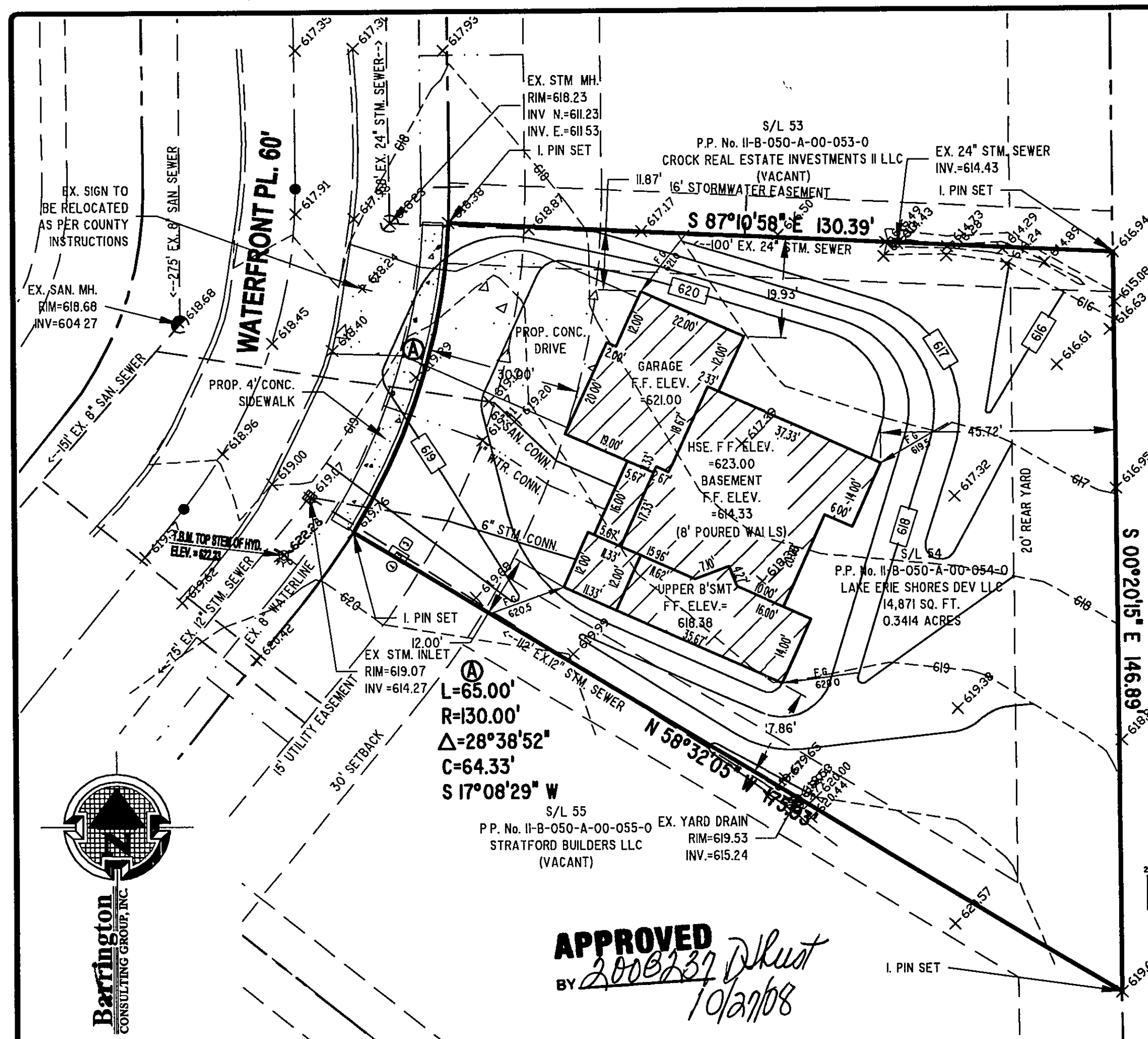
"I HEREBY CERTIFY THAT THIS PLAN WAS PREPARED BY ME AND IS CORRECT TO THE BEST OF MY KNOWLEDGE AND BELIEF"

David W. Novak
DAVID W. NOVAK, P.S. No. 7507
CERT-1-0000

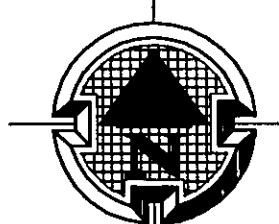
GRAPHIC SCALE



(IN FEET)
1 Inch = 20 ft.
Stormwater Management Plan
Approved as shown and/or noted
JAMES R. GILLIS, P.E.
County Drainage Engineer
By L.S. Date 10/29/08
05138-054



APPROVED
BY 2008237 D. Rust
10/27/08



Barrington
CONSULTING GROUP, INC.

W:\2008\05138-054\05138-054.dwg, 10/21/2008 4:13:43 PM, Copyright Barrington Consulting Group