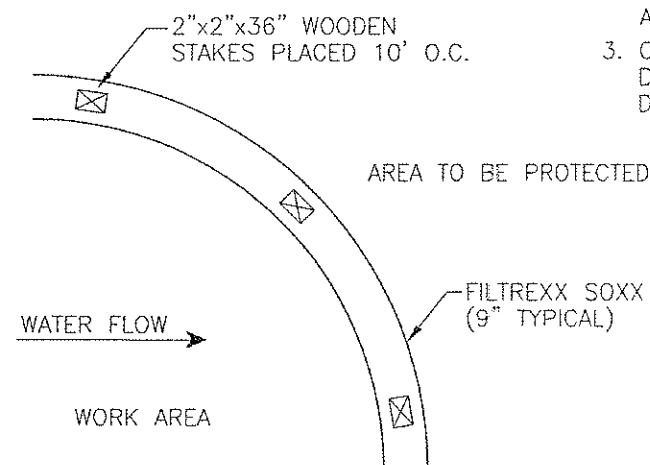


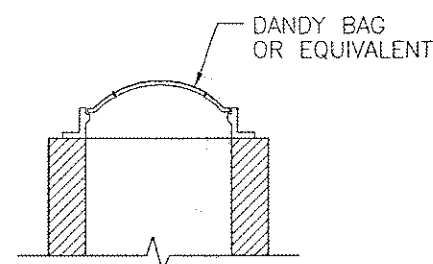
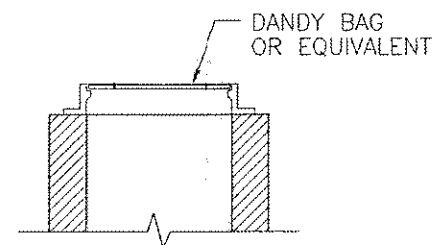
SECTION



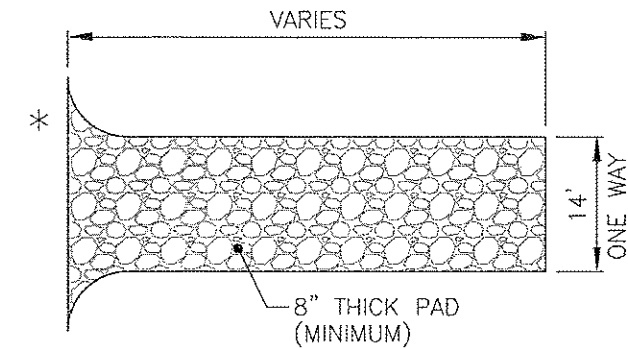
PLAN  
FILTREXX SEDIMENT CONTROL

NOTES:

1. ALL MATERIAL TO MEET FILTREXX SPECIFICATIONS
2. FILTER MEDIA FILL TO MEET APPLICATIONS REQUIREMENTS
3. COMPOST MATERIAL TO BE DISPERSED ON SITE, AS DETERMINED BY OWNER.



FILTER FABRIC EROSION CONTROL  
FOR MANHOLES OR INLETS



1. THE AGGREGATE SIZE FOR CONSTRUCTION OF THE PAD SHALL BE 2 INCH STONE. PLACE THE GRAVEL FLUSH TO THE EXISTING ADJACENT PAVEMENT, SMOOTH IT, AND LEVEL IT AS REQUIRED.
2. THE THICKNESS OF THE PAD SHALL NOT BE LESS THAN 8 INCH MINIMUM. USE NON-WOVEN GEOTEXTILE FABRICS TO IMPROVE STABILITY OF THE FOUNDATION. GEOTEXTILE FABRIC SHALL BE TREVIRA SPUN BOUND TYPE 011/250 OR APPROVED EQUAL. IT SHALL HAVE A GRAB TENSILE STRENGTH OF AT LEAST 190 LB. AND WILL BE PLACED OVER THE ENTIRE AREA PRIOR TO PLACING OF STONE.
3. THE WIDTH OF THE PAD SHALL NOT BE LESS THAN THE FULL WIDTH OF ALL POINTS OF INGRESS OR EGRESS AND IN ANY CASE SHALL NOT BE LESS THAN 14 FEET WIDE.
4. MAINTENANCE - THE ENTRANCE SHALL BE MAINTAINED IN A CONDITION WHICH WILL PREVENT TRACKING OR FLOWING OF SEDIMENT ON TO PUBLIC RIGHT-OF-WAY(S). THIS MAY REQUIRE PERIODIC TOP DRESSING WITH ADDITIONAL STONE. MUD SPILLED, DROPPED, WASHED, OR TRACKED ONTO PUBLIC ROADS, OR ANY SURFACE WHERE RUNOFF IS NOT CHECKED BY SEDIMENT CONTROLS, SHALL BE REMOVED IMMEDIATELY. REMOVAL SHALL BE ACCOMPLISHED BY SCRAPING AND/OR SWEEPING.
5. PERIODIC INSPECTION AND NEEDED MAINTENANCE SHALL BE PROVIDED AFTER EACH RAIN, OR EVERY SEVEN DAYS.
6. CONSTRUCTION ENTRANCES SHALL NOT BE RELIED UPON TO REMOVE MUD FROM VEHICLES AND PREVENT OFF-SITE TRACKING. VEHICLES THAT ENTER AND LEAVE THE CONSTRUCTION SITE SHALL BE RESTRICTED FROM MUDDY AREAS.

STABILIZED CONSTRUCTION ENTRANCE

\* SEE PLAN FOR LAYOUT

**SITE PLAN**  
**LAKE ERIE SHORES - PHASE 5**  
**SUBLOT 315**  
**PAINESVILLE TOWNSHIP - LAKE COUNTY - OHIO**

**oxbow Engineering, Inc.**  
10 West Erie Street, Suite 201 Painesville, Ohio 44077  
Phone (440) 352-8559 Fax (440) 352-8136  
oxbowengineering@earthlink.net

JOB NUMBER: 11014  
DATE: 09-18-12  
DRAWN BY: C R T  
CHECKED BY: L M E  
NO. REVISION

BY DATE