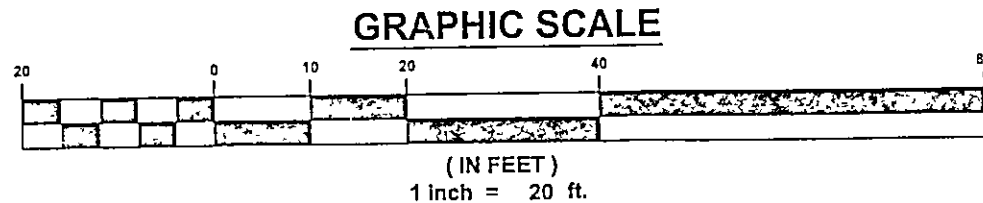
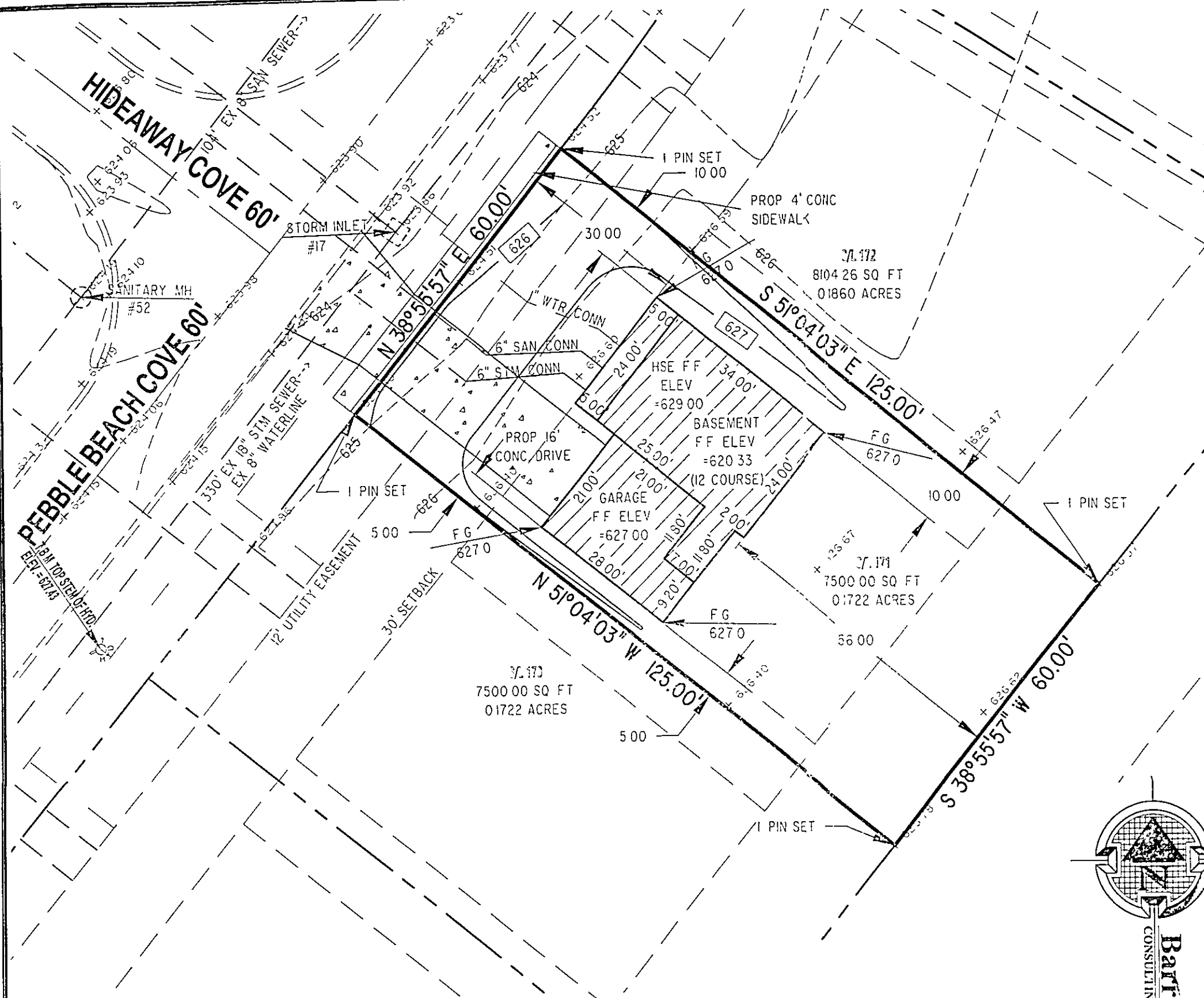
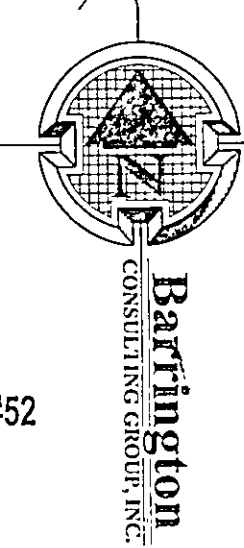


\\2003\03106\03106-174.dwg, 04/13/04 07:26:26 AM, Copyright Barrington Consulting Group



STORM INLET #17 RIM=623.86 INV. 18' =618.16
SANITARY MH. #52 RIM=624.19 INV.=615.00



- GENERAL NOTES:**
- 1 BENCHMARK - TOP STEM OF EXISTING FIRE HYDRANT LOCATED IN FRONT SUBLOT 169, ELEVATION = 627.43
 - 2 DRIVEWAY APRON TO BE 6" THICK CONCRETE.
 - 3 ALL DOWNSPOUTS TO BE OUTLETTED TO SPLASH BLOCKS.
 - 4 CONTRACTOR RESPONSIBLE FOR CONTACTING THE OHIO UTILITY PROTECTION SERVICE (1.800.362.2764) AND ALL UTILITY COMPANIES A MINIMUM OF 48 HOURS PRIOR TO CONSTRUCTION.
 - 5 THE LOCATION BOTH HORIZONTAL AND VERTICAL OF EXISTING UNDERGROUND UTILITIES SHOWN HEREON, HAVE BEEN OBTAINED BY A DILIGENT AND COMPREHENSIVE SEARCH OF AVAILABLE RECORDS VERIFICATION BY FIELD OBSERVATION HAS BEEN CONDUCTED WHERE PRACTICAL, HOWEVER, BARRINGTON CONSULTING GROUP, INC. DOES NOT GUARANTEE THE COMPLETENESS, NOR ACCURACY THEREOF
 - 6 CONTRACTOR SHALL VERIFY ELEVATIONS OF LATERAL INVERTS IN THE FIELD PRIOR TO FOUNDATION EXCAVATION.
 - 7 SEE SHEET 2 FOR EROSION AND SEDIMENT-CONTROL PLAN
 8. SEE SHEET 2 FOR SEEDING INFORMATION

CERTIFICATION :

"I THE UNDERSIGNED HEREBY CERTIFIES THAT THIS TOPOGRAPHY INDICATED BY 1 FOOT CONTOURS AND ELEVATION SHOWN HEREON REPRESENTS AN ACTUAL SURVEY MADE BY ME ON THE 8th DAY OF APRIL, 2004 AND THE ELEVATIONS WERE TAKEN AT AN APPROPRIATE INTERVAL AND AS OF THAT DAY THEY EXISTED AS INDICATED HEREON.

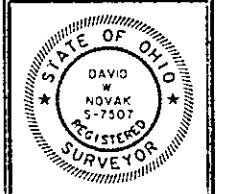
"I HEREBY CERTIFY THAT THIS PLAN WAS PREPARED BY ME AND IS CORRECT TO THE BEST OF MY KNOWLEDGE AND BELIEF"

DAVID W. NOVAK, P.E. No. 7507
C.E.T. 1000
Stormwater Management Plan
Approved as shown and/or noted
JAMES R. GILLS, P.E.
County Drainage Engineer
By 6/14 Date 04/16/04

APPROVED
PAINESVILLE TOWNSHIP
ZONING DEPARTMENT
2004032
D. Rust

REVISIONS	BY

Barrington
CONSULTING GROUP, INC.
38342 WESTERN PARKWAY, SUITE 10
WILLOUGHBY, OHIO 44094
PHONE 440.946.1761 FAX 440.918.0486



SITE PLAN
SIL 171 PEBBLE BEACH COVE, PAINESVILLE TWP. OHIO 44077
LAKE ERIE SHORES PHASE 2
LITTLE MOUNTAIN HOMES, INC

DRAWN WSO
CHECKED DWN
DATE APRIL 13, 2004
SCALE 1" = 20'
JOB NO 03106-171
SHEET 1/2
OF SHEETS