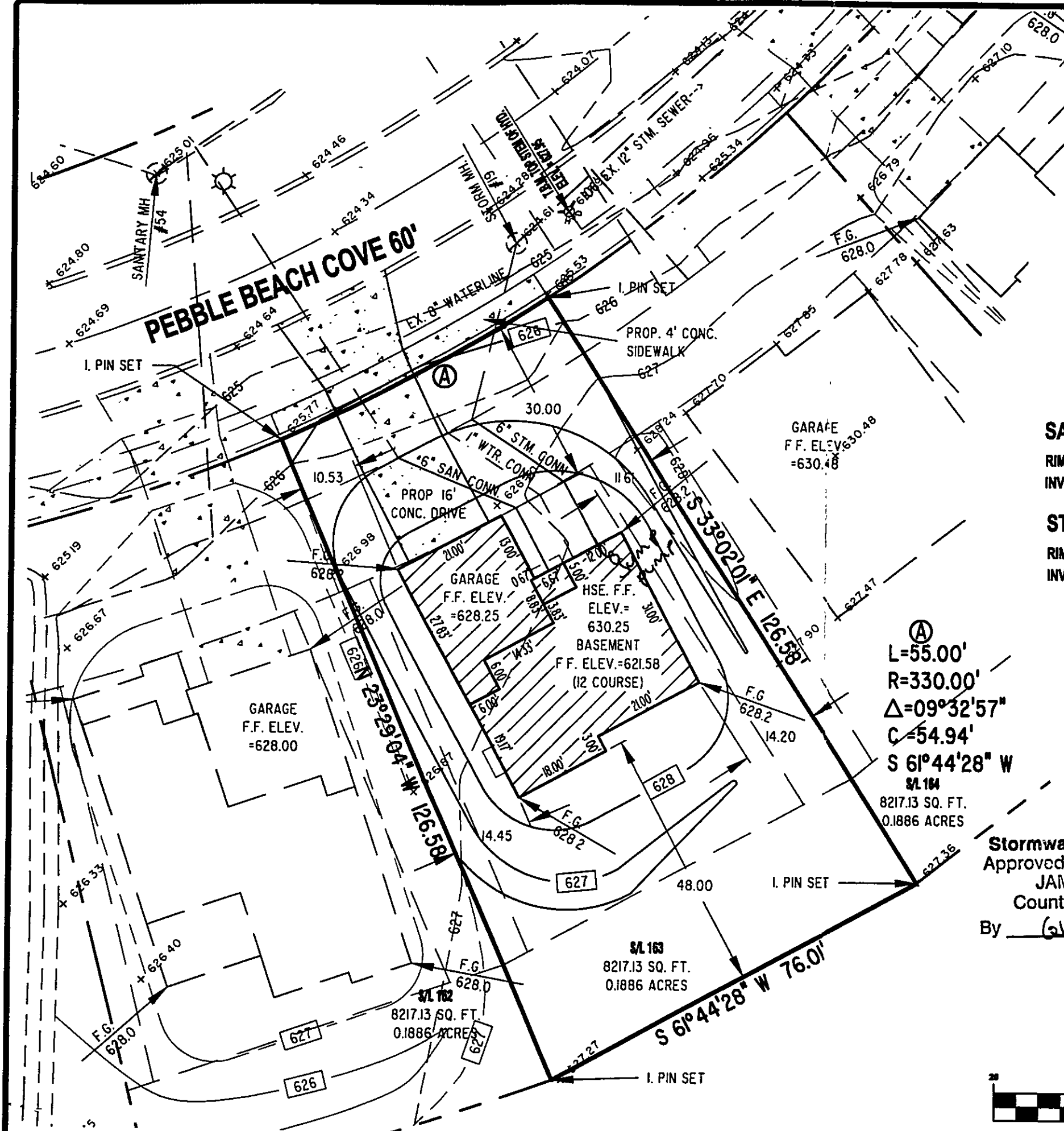


\\200310310603106-163.dwg, 08/24/04 10:39:23 AM, Copyright Barrington Consulting Group



GENERAL NOTES:

1. BENCHMARK - TOP STEM OF EXISTING FIRE HYDRANT LOCATED IN FRONT OF SUBLOT 164, ELEVATION = 627.95.
2. DRIVEWAY APRON TO BE 6" THICK CONCRETE.
3. ALL DOWNSPOUTS TO BE OUTLETED TO SPLASH BLOCKS.
4. CONTRACTOR RESPONSIBLE FOR CONTACTING THE OHIO UTILITY PROTECTION SERVICE (1.800.362.2764) AND ALL UTILITY COMPANIES A MINIMUM OF 48 HOURS PRIOR TO CONSTRUCTION.
5. THE LOCATION BOTH HORIZONTAL AND VERTICAL OF EXISTING UNDERGROUND UTILITIES SHOWN HEREON, HAVE BEEN OBTAINED BY A DILIGENT AND COMPREHENSIVE SEARCH OF AVAILABLE RECORDS. VERIFICATION BY FIELD OBSERVATION HAS BEEN CONDUCTED WHERE PRACTICAL, HOWEVER, BARRINGTON CONSULTING GROUP, INC. DOES NOT GUARANTEE THE COMPLETENESS, NOR ACCURACY THEREOF.
6. CONTRACTOR SHALL VERIFY ELEVATIONS OF LATREAL INVERTS IN THE FIELD PRIOR TO FOUNDATION EXCAVATION.

SANITARY MH. #54

RIM=625.01
INV.=617.61

STORM INLET #19

RIM=624.61
INV. 12" NE.=620.28

①
L=55.00'
R=330.00'
Δ=09°32'57"
C=54.94'
S 61°44'28" W

S/L 164
8217.13 SQ. FT.
0.1886 ACRES

Stormwater Management Plan
Approved as shown and/or noted
JAMES R. GILLS, P.E.
County Drainage Engineer

By GRT Date 8/27/04

"I HEREBY CERTIFY THAT THIS PLAN WAS PREPARED BY ME AND IS CORRECT TO THE BEST OF MY KNOWLEDGE AND BELIEF"

DAVID W. NOVAK, P.S. No. 7507

APPROVED
PAINESVILLE TOWNSHIP
ENGINEERING DEPARTMENT

GRAPHIC SCALE



(IN FEET)

1 inch = 20 feet

REVISIONS	BY

Barrington
CONSULTING GROUP, INC.
3342 WESTERN PARKWAY, SUITE 10
WILLOUGHBY, OHIO 44094
PHONE 440.946.1761 FAX 440.918.0486



SITE PLAN
S/L 163 PEBBLE BEACH COVE, PAINESVILLE TWP. OHIO 44077
LAKE ERIE SHORES PHASE 2

LITTLE MOUNTAIN HOMES, INC.

DRWN
WSO
CHECKED
DWN
DATE
AUG. 24, 2004
SCALE
1" = 20'
JOB NO.
03106-163
SHEET

112