

ROOF DRAINS  
SHALL DISCHARGE  
TO SPLASH BLOCKS.

Stormwater Management Plan  
Approved as shown and/or noted  
JAMES R. GILLS, P.E.  
County Drainage Engineer

By L.S. Date 2/22/05  
CONNECT SUMP PUMP  
TO STORM CONNECTION.

# GENERAL NOTES:

1. BENCHMARK - TOP STEM OF EXISTING FIRE HYDRANT LOCATED IN FRONT SUBLOT 150, ELEVATION = 628.71.
2. DRIVEWAY APRON TO BE 6" THICK CONCRETE.
3. ALL DOWNSPOUTS TO BE OUTLETTED TO SPLASH BLOCKS.
4. CONTRACTOR RESPONSIBLE FOR CONTACTING THE OHIO UTILITY PROTECTION SERVICE (1.800.362.2764) AND ALL UTILITY COMPANIES A MINIMUM OF 48 HOURS PRIOR TO CONSTRUCTION.
5. THE LOCATION BOTH HORIZONTAL AND VERTICAL OF EXISTING UNDERGROUND UTILITIES SHOWN HEREON, HAVE BEEN OBTAINED BY A DILIGENT AND COMPREHENSIVE SEARCH OF AVAILABLE RECORDS. VERIFICATION BY FIELD OBSERVATION HAS BEEN CONDUCTED WHERE PRACTICAL, HOWEVER, BARRINGTON CONSULTING GROUP, INC. DOES NOT GUARANTEE THE COMPLETENESS, NOR ACCURACY THEREOF.
6. CONTRACTOR SHALL VERIFY ELEVATIONS OF LATERAL INVERTS IN THE FIELD PRIOR TO FOUNDATION EXCAVATION.
7. SEE SHEET 2 FOR EROSION AND SEDIMENT-CONTROL PLAN
8. SEE SHEET 2 FOR SEEDING INFORMATION

## CERTIFICATION :

"I THE UNDERSIGNED HEREBY CERTIFIES THAT THIS TOPOGRAPHY INDICATED BY 1 FOOT CONTOURS AND ELEVATION SHOWN HEREON REPRESENTS AN ACTUAL SURVEY MADE BY ME ON THE 5th DAY OF OCTOBER, 2004 AND THE ELEVATIONS WERE TAKEN AT AN APPROPRIATE INTERVAL AND AS OF THAT DAY THEY EXISTED AS INDICATED HEREON.

"I HEREBY CERTIFY THAT THIS PLAN WAS PREPARED BY ME AND IS CORRECT TO THE BEST OF MY KNOWLEDGE AND BELIEF"

DAVID W. NOVAK, P.S. No. 7507

CERT-1.DWG

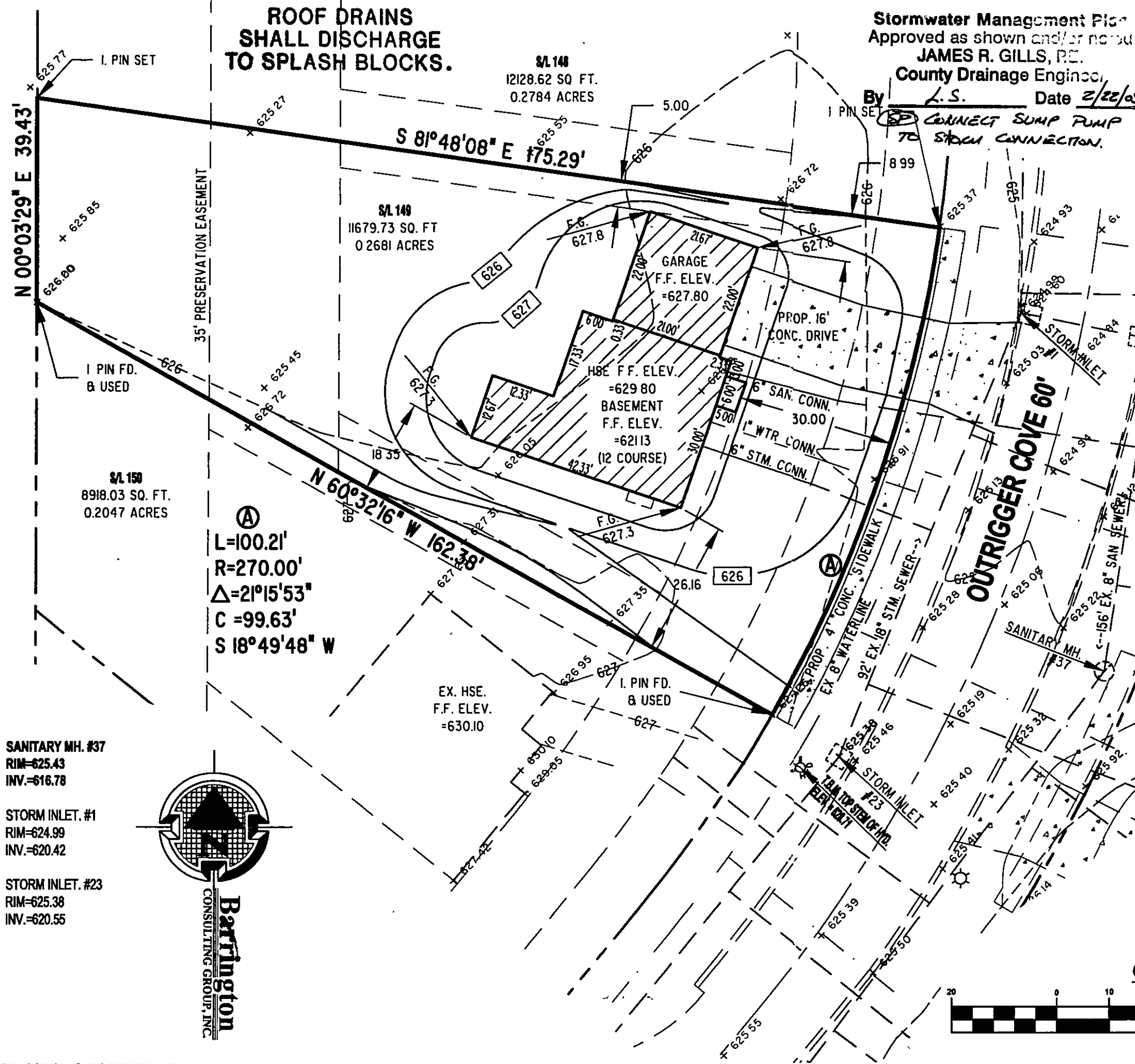
REVISIONS	BY
REVISED HOUSE FEB. 02, 2005	WSO

**Barrington**  
CONSULTING GROUP, INC.  
9114 TYLER BLVD. MENTOR, OHIO 44060  
PHONE 440.285.1260 FAX 440.285.1262  
BCG@BarringtonCGL.com



**SITE PLAN**  
S/L 149 OUTRIGGER COVE, PAINESVILLE TWP., OHIO 44077  
LAKE ERIE SHORES PHASE 2  
RESSLER HOMES,

DRAWN WSO
CHECKED DWN
DATE OCT. 25, 2004
SCALE 1" = 20'
JOB NO. 03108-149
SHEET 1/2

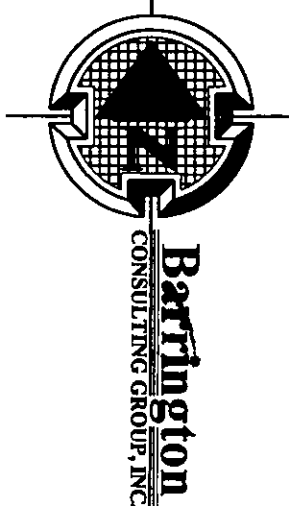


Ⓐ  
L=100.21'  
R=270.00'  
Δ=21°15'53"  
C=99.63'  
S 18°49'48" W

SANITARY MH. #37  
RIM=625.43  
INV.=616.78

STORM INLET. #1  
RIM=624.99  
INV.=620.42

STORM INLET. #23  
RIM=625.38  
INV.=620.55



GRAPHIC SCALE

(IN FEET)  
1 inch = 20 ft.

03108-149