

Builder and all subcontractors shall review this plan to verify house dimensions and all site improvements for any discrepancies, omissions and/or changes and notify Barrington Consulting Group, Inc. prior to any site work.

GENERAL NOTES:

1. BENCHMARK - TOP STEM OF EXISTING FIRE HYDRANT LOCATED IN FRONT SUBLOT 55, ELEVATION = 622.23.
2. DRIVEWAY APRON TO BE 6" THICK CONCRETE.
3. ALL DOWNSPOUTS TO BE OUTLETTED TO SPLASH BLOCKS.
4. CONTRACTOR RESPONSIBLE FOR CONTACTING THE OHIO UTILITY PROTECTION SERVICE (1.800.362.2764) AND ALL UTILITY COMPANIES A MINIMUM OF 48 HOURS PRIOR TO CONSTRUCTION.
5. THE LOCATION BOTH HORIZONTAL AND VERTICAL OF EXISTING UNDERGROUND UTILITIES SHOWN HEREON, HAVE BEEN OBTAINED BY A DILIGENT AND COMPREHENSIVE SEARCH OF AVAILABLE RECORDS. VERIFICATION BY FIELD OBSERVATION HAS BEEN CONDUCTED WHERE PRACTICAL, HOWEVER, BARRINGTON CONSULTING GROUP, INC. DOES NOT GUARANTEE THE COMPLETENESS, NOR ACCURACY THEREOF.
6. CONTRACTOR SHALL VERIFY ELEVATIONS OF LATERAL INVERTS IN THE FIELD PRIOR TO FOUNDATION EXCAVATION.
7. PRIOR TO ANY WORK BEING PERFORMED WITH THE RIGHT OF WAY AND/OR UNDERGROUND UTILITY EASEMENTS, CONTRACTOR SHALL CONFIRM THAT ALL REQUIRED CLEARANCES AND BURY DEPTHS OF ALL UNDERGROUND UTILITIES WILL BE MAINTAINED AS A RESULT OF ANY AND ALL SITE IMPROVEMENTS.
8. SEE SHEET 2 FOR EROSION AND SEDIMENT-CONTROL PLAN
9. SEE SHEET 2 FOR SEEDING INFORMATION

CERTIFICATION:

"I THE UNDERSIGNED HEREBY CERTIFIES THAT THIS TOPOGRAPHY INDICATED BY 1 FOOT CONTOURS AND ELEVATION SHOWN HEREON REPRESENTS AN ACTUAL SURVEY MADE BY ME ON THE 11th DAY OF SEPTEMBER, 2013 AND THE ELEVATIONS WERE TAKEN AT AN APPROPRIATE INTERVAL AND AS OF THAT DAY THEY EXISTED AS INDICATED HEREON.

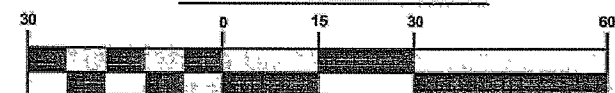
"I HEREBY CERTIFY THAT THIS PLAN WAS PREPARED BY ME AND IS CORRECT TO THE BEST OF MY KNOWLEDGE AND BELIEF"

David W. Novak 9/16/2013

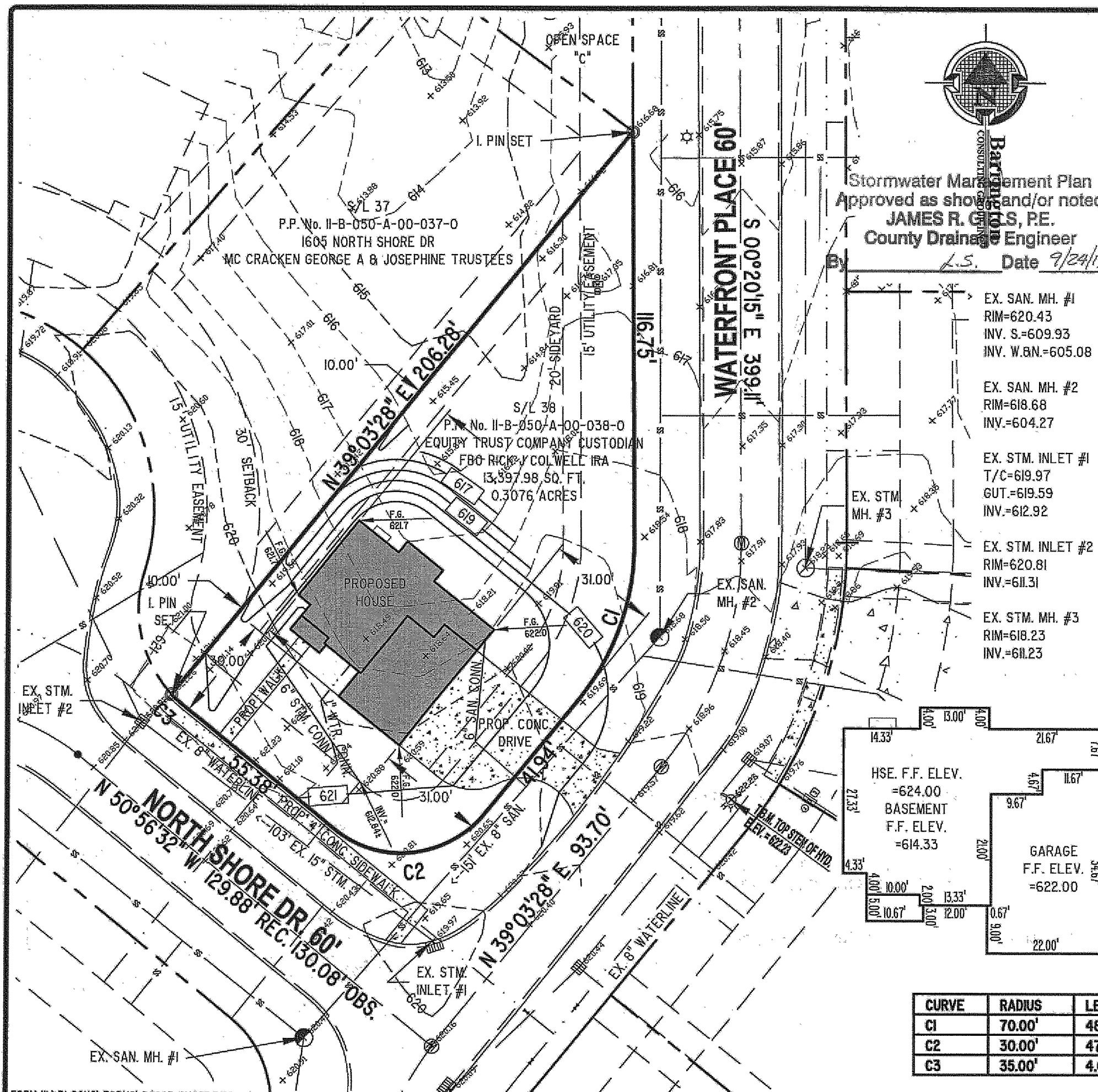
DAVID W. NOVAK, P.S. No. 7507

CERT-LDWG

GRAPHIC SCALE



CURVE	RADIUS	LENGTH	CHORD	BEARING	DELTA ANGLE
C1	70.00'	48.13'	47.19'	S 19°21'37" W	39°23'43"
C2	30.00'	47.12'	42.43'	S 84°03'28" W	90°00'00"
C3	35.00'	4.63'	4.63'	N 47°08'57" W	07°35'09"



Stormwater Management Plan
Approved as shown and/or noted
JAMES R. GILLES, P.E.
County Drainage Engineer

By *L.S.* Date 9/24/13

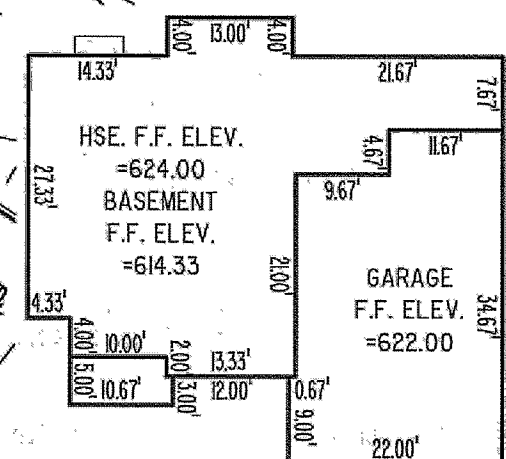
EX. SAN. MH. #1
RIM=620.43
INV. S.=609.93
INV. W.B.N.=605.08

EX. SAN. MH. #2
RIM=618.68
INV.=604.27

EX. STM. INLET #1
T/C=619.97
GUT.=619.59
INV.=612.92

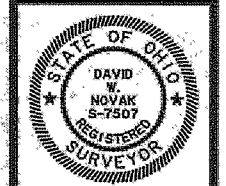
EX. STM. INLET #2
RIM=620.81
INV.=611.31

EX. STM. MH. #3
RIM=618.23
INV.=611.23



REVISIONS	BY

Barrington
CONSULTING GROUP, INC.
9114 TYLER BLVD., MENTOR, OHIO 44060
PHONE 440.205.1260 FAX 440.205.1262
www.BarringtonCGI.com



SITE PLAN
SIL 38 NORTH SHORE DR., PAINESVILLE TWP., OHIO 44077
NORTH SHORE ESTATES ST LAKE ERIE SHORES VOL. 50 PG. 5
LITTLE MOUNTAIN HOMES, INC.

DRAWN
WSO
CHECKED
DWN
DATE
SEPT. 16, 2013
SCALE
1" = 30'
JOB NO.
05098-038
SHEET
112
OF SHEETS