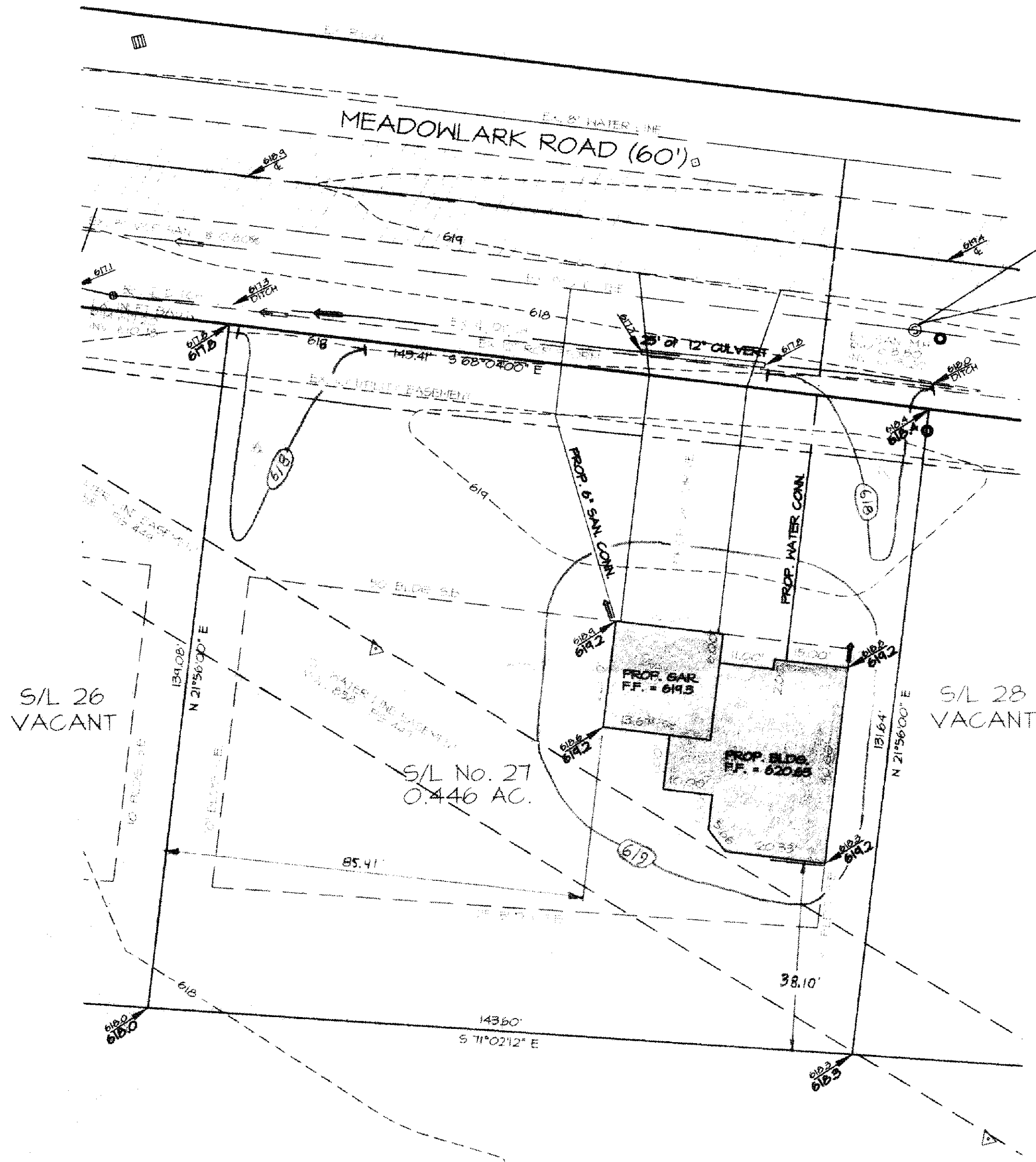


SCALE: 1"=20'



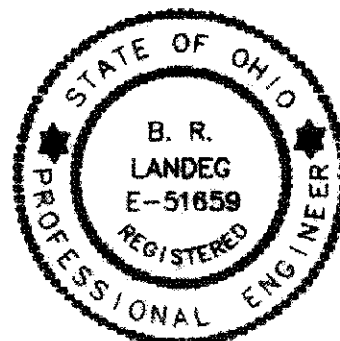
### LEGEND

- = EX. LIGHT POLE
- = EX. CURB INLET BASIN
- = EX. SIGN
- = EX. UTILITY POLE
- = EX. WATER LINE VALVE
- = EX. HYDRANT
- = EX. MAILBOX
- = EX. TREE
- = EX. ELEC. CONN.
- = EX. PHONE CONN.
- = EX. UTILITY CONN.
- = DOWNSPOUT RUNOFF
- = PROP. ELEV.
- = PROPOSED CONTOUR
- = EXISTING CONTOUR

APPROVED  
PAINESVILLE TOWNSHIP  
ZONING DEPARTMENT  
2/24/97  
DKW

Grading Plan Approved  
as shown and/or noted  
THOMAS P. GILLES, P.E.  
Lake County Engineer

By BJH 8-5-97



### CERTIFICATION:

"I, THE UNDERSIGNED HEREBY CERTIFY THAT THIS TOPOGRAPHY INDICATED BY 1"-0" CONTOURS AND ELEVATIONS SHOWN HEREON REPRESENTS AN ACTUAL FIELD SURVEY MADE BY ME ON THE 22nd DAY OF APRIL 1997 AND THAT THE ELEVATIONS WERE TAKEN AT APPROPRIATE INTERVALS AND THAT AS OF THAT DATE THEY EXISTED AS INDICATED HEREON."

Bruce R. Landeg 5-30-97  
BRUCE R. LANDEG, P.E. DATE

SITE PLAN FOR S/L No. 27 IN  
THE MISTY MEADOW SUBDIVISION II  
PAINESVILLE TWP. - LAKE COUNTY - OHIO  
PREPARED FOR: J.S. KOVACH CONSTRUCTION  
COMPANY, INC.

Greenland Consulting, Inc.  
Planning - Surveying - Engineering  
6520 Hopkins Road Mentor, OH 44060  
Phone: (216) 205-8167 Fax: (216) 205-1923  
MAY 1997