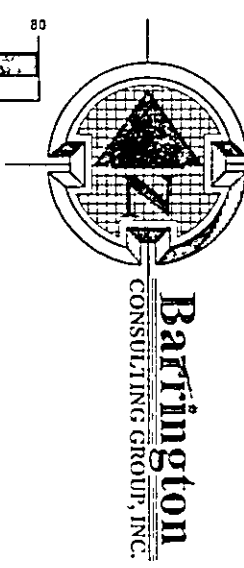
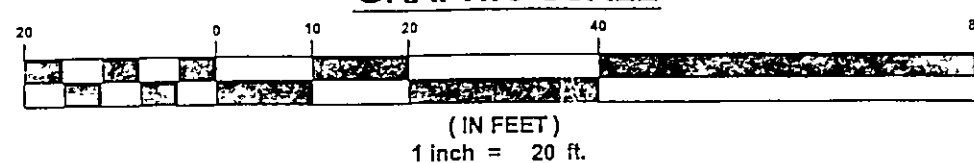
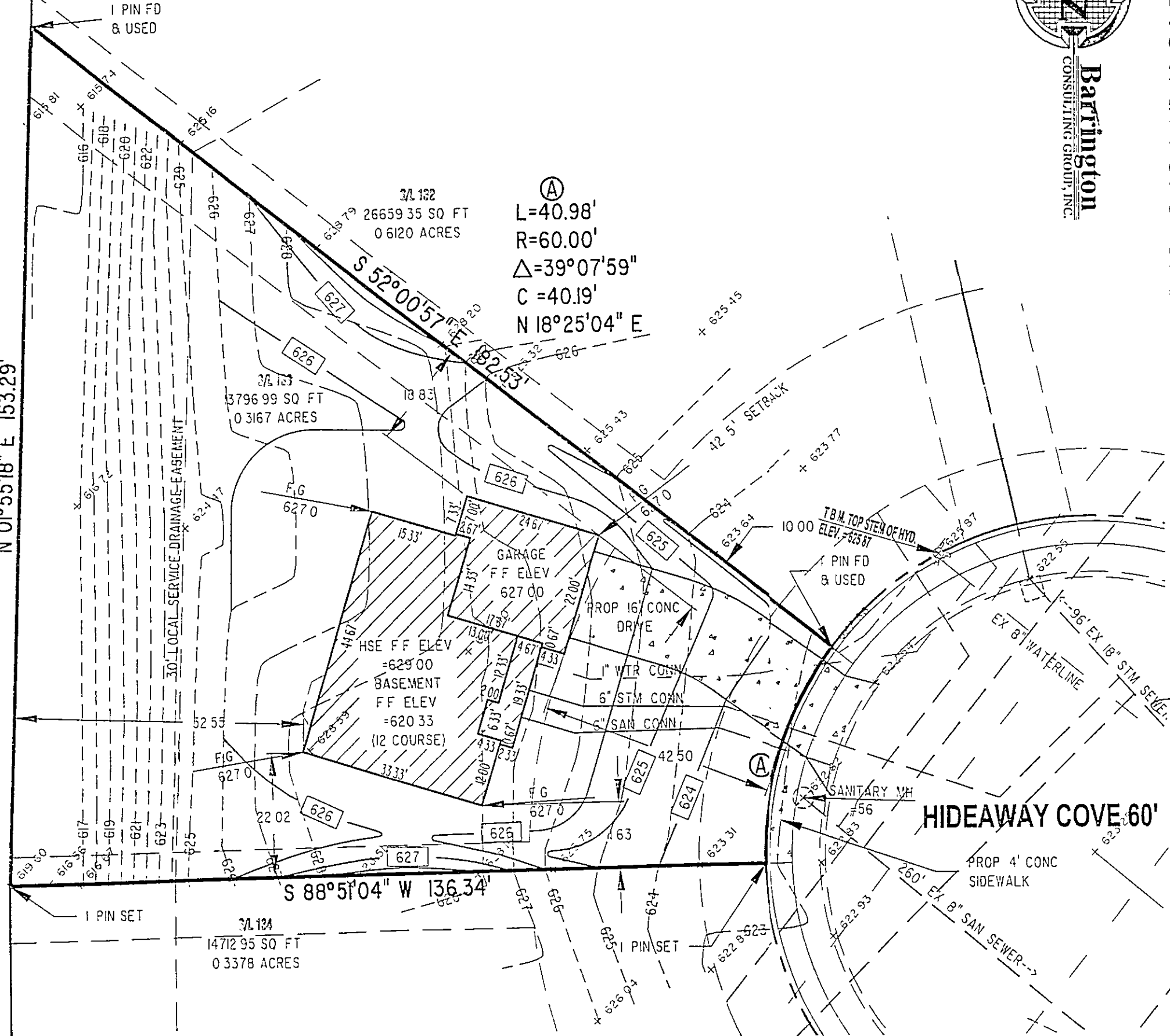


N 0°55'18" E 153.29'



- GENERAL NOTES:**
1. BENCHMARK - TOP STEM OF EXISTING FIRE HYDRANT LOCATED IN FRONT SUBLOT 132, ELEVATION = 625.87.
  2. DRIVEWAY APRON TO BE 6" THICK CONCRETE.
  3. ALL DOWNSPOUTS TO BE OUTLETTED TO SPLASH BLOCKS.
  4. CONTRACTOR RESPONSIBLE FOR CONTACTING THE OHIO UTILITY PROTECTION SERVICE (1 800 362.2764) AND ALL UTILITY COMPANIES A MINIMUM OF 48 HOURS PRIOR TO CONSTRUCTION.
  5. THE LOCATION BOTH HORIZONTAL AND VERTICAL OF EXISTING UNDERGROUND UTILITIES SHOWN HEREON, HAVE BEEN OBTAINED BY A DILIGENT AND COMPREHENSIVE SEARCH OF AVAILABLE RECORDS. VERIFICATION BY FIELD OBSERVATION HAS BEEN CONDUCTED WHERE PRACTICAL, HOWEVER, BARRINGTON CONSULTING GROUP, INC. DOES NOT GUARANTEE THE COMPLETENESS, NOR ACCURACY THEREOF.
  6. CONTRACTOR SHALL VERIFY ELEVATIONS OF LATERAL INVERTS IN THE FIELD PRIOR TO FOUNDATION EXCAVATION
  7. SEE SHEET 2 FOR EROSION AND SEDIMENT-CONTROL PLAN
  8. SEE SHEET 2 FOR SEEDING INFORMATION

**CERTIFICATION :**

"I THE UNDERSIGNED HEREBY CERTIFIES THAT THIS TOPOGRAPHY INDICATED BY 1 FOOT CONTOURS AND ELEVATION SHOWN HEREON REPRESENTS AN ACTUAL SURVEY MADE BY ME ON THE 13th DAY OF MAY, 2004 AND THE ELEVATIONS WERE TAKEN AT AN APPROPRIATE INTERVAL AND AS OF THAT DAY THEY EXISTED AS INDICATED HEREON.

"I HEREBY CERTIFY THAT THIS PLAN WAS PREPARED BY ME AND IS CORRECT TO THE BEST OF MY KNOWLEDGE AND BELIEF"

*David W. Novak*  
DAVID W. NOVAK, P.S. No. 7507

**HIDEAWAY COVE .60'**

**SANITARY MH. #56**

RIM=622.82  
INV.=616.00

Stormwater Management Plan  
Approved by shown and/or noted  
JAMES R. GILLS, P.E.  
County Drainage Engineer  
Rv. 614 Date 5/25/04  
Lower F6 To 626.00

03108-133

REVISED HOUSE	WSO
DEC '6, 2003	

**Barrington**  
CONSULTING GROUP, INC.  
38342 WESTERN PARKWAY, SUITE 10  
WILLIHOUGHBY, OHIO 44094  
PHONE 410.946.1761 FAX 410.918.0486



**SITE PLAN**  
SIL 133 HIDEAWAY COVE, PAINESVILLE TWP., OHIO 44077  
LAKE ERIE SHORES PHASE 2  
RESSLER HOMES,

DRAWN	WSO
CHECKED	DWN
DATE	MAY 17, 2004
SCALE	1" = 20'
JOB NO	03108-133
SHEET	112
OF	SHEETS