

PAINESVILLE TOWNSHIP
LAKE COUNTY, OHIO

M.M. BOGART DEVELOPMENT CORP.

Grading Plan Approved
as shown and/or noted
THOMAS P. GILLES, P.E.
Lake County Engineer

I HEREBY CERTIFY THAT THIS PLAN IS AN ACCURATE AND TRUE REPRESENTATION OF SAID PROPERTY.

DAVID K. MOSTOLLER R.S. #69499

I HEREBY CERTIFY THAT THE CIRCLED GRADES ARE EXISTING FINISH GRADES CHECKED IN THE FIELD ON , 19 , AND ARE CORRECT TO THE BEST OF MY KNOWLEDGE AND BELIEF.

DAVID K. MOSTOLLER R.S. #6949

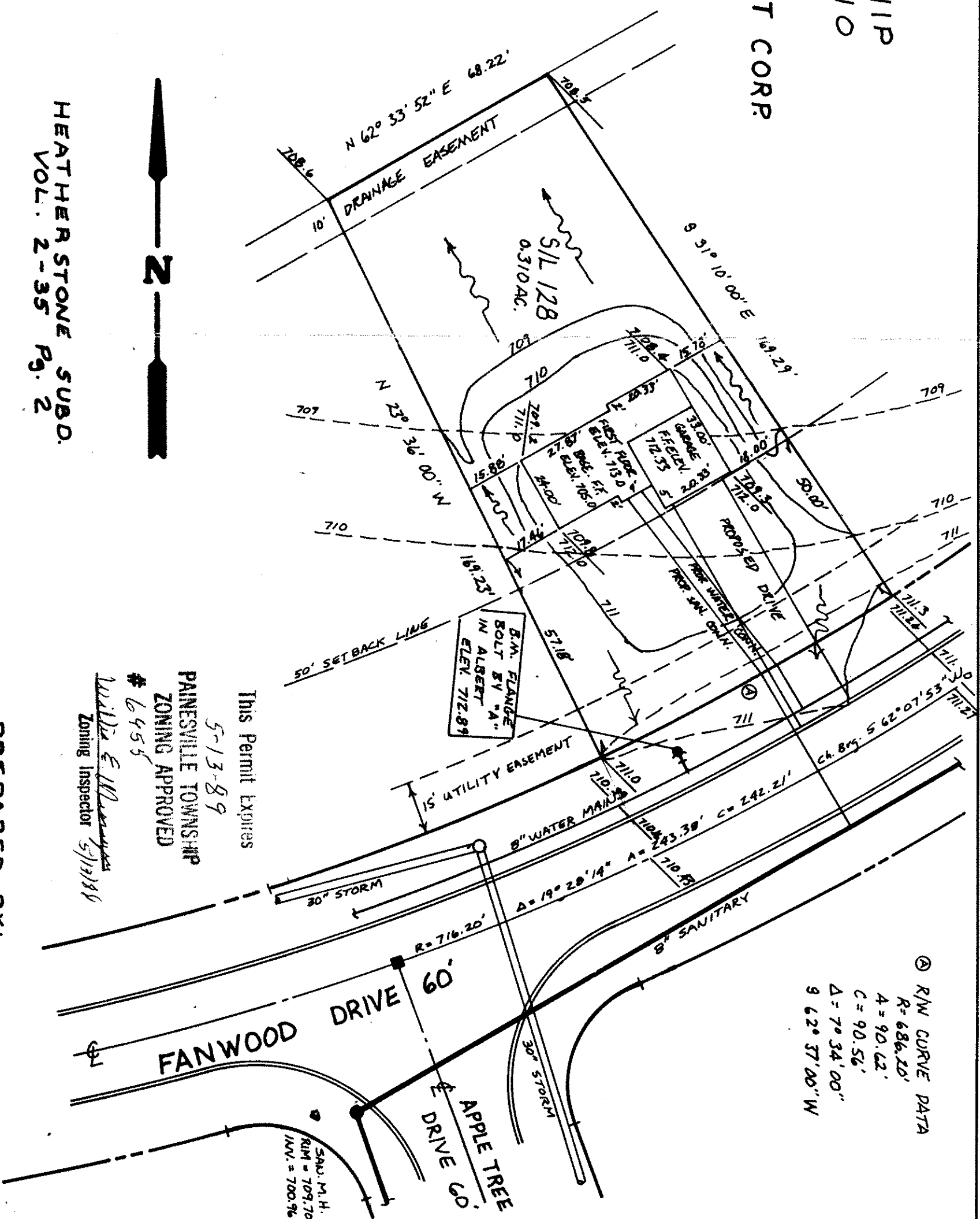
- SANITARY MANHOLE
- STORM MANHOLE
- INLET OR CATCH BASIN
- HYDRANT

PROPOSED CONTOUR

EXIST. ELEV. \rightarrow 100.0
100.0 \rightarrow PROP. ELEV

AS BUILT ELEVATION 1000.0

DIRECTION OF DRAINAGE



FISHER & ASSOCIATES INC.
ENGINEERS AND CONSULTANTS
SCALE: 1"=30' DATE: MAY 1988

SCALE: 1"=30'
DATE: MAY 1988