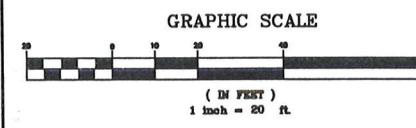


TOPOGRAPHIC CERTIFICATION:
I, the undersigned, hereby certify that the topography indicated by contours and elevations shown hereon represent an actual field survey made by me on the 20th day of JANUARY, 2013 and that the elevations were taken at appropriate intervals and that as of this date the same are indicated herein without any modification on NAVD83.



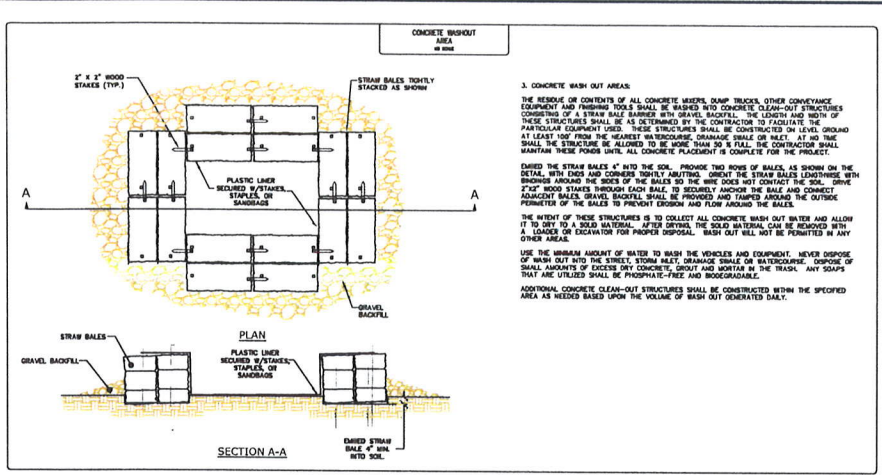
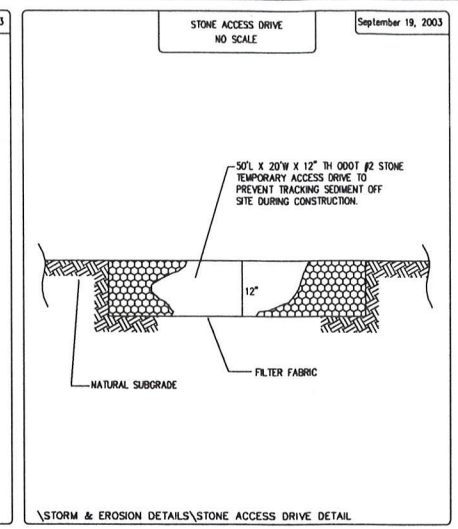
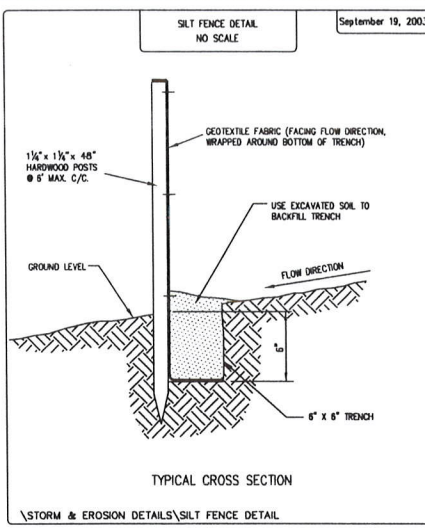
Richard A. Thompson, Jr.
RICHARD A. THOMPSON, JR., P.E. #7388



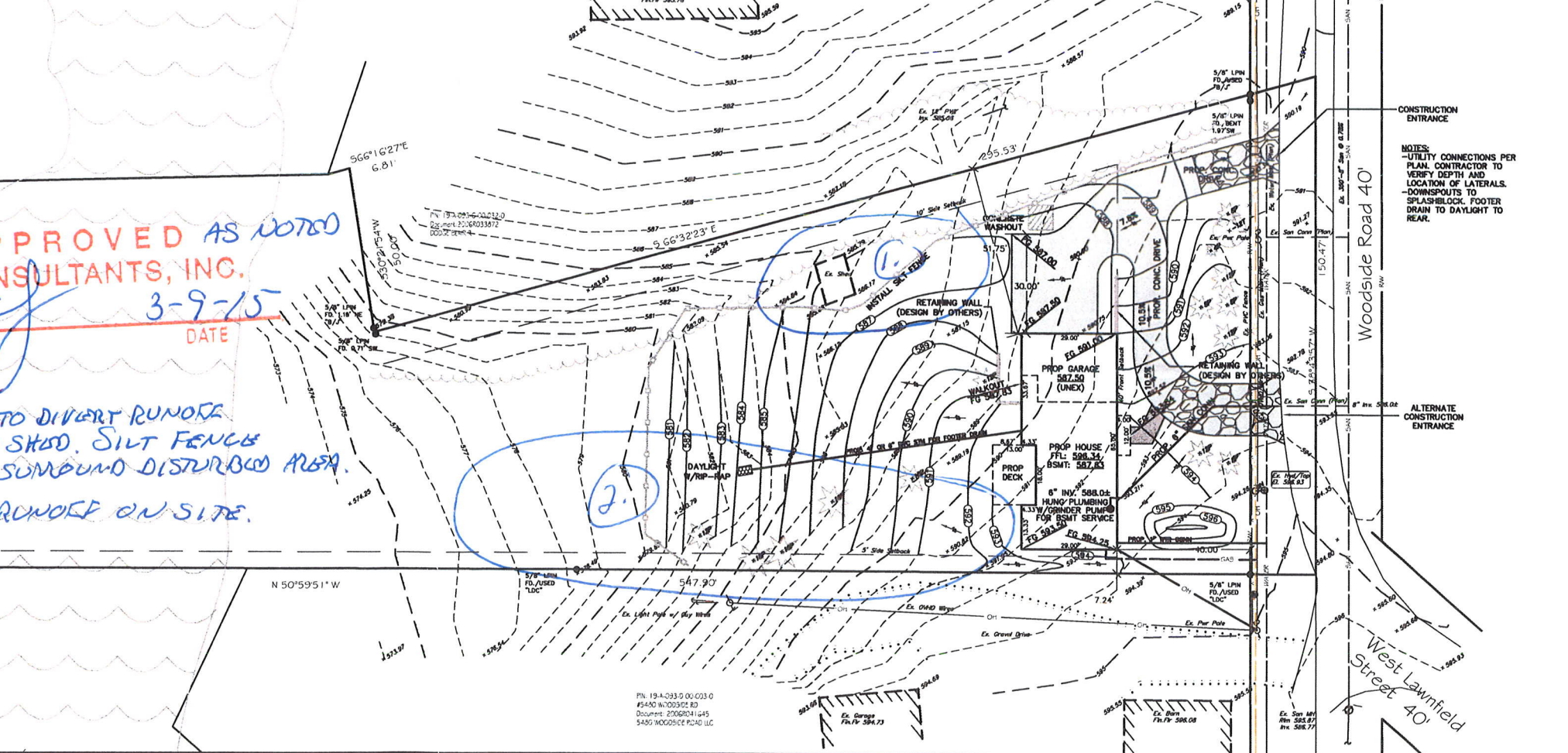
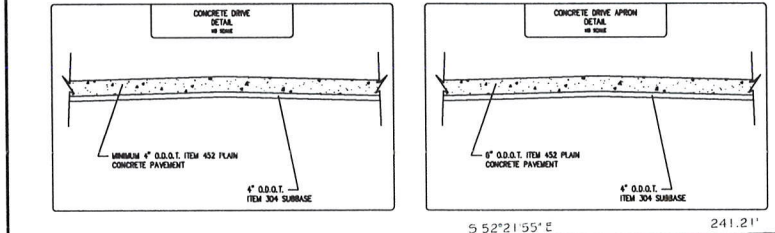
Temporary Seeding Specifications

Seeding Dates	Species	Lb. / 1000sqft	Per Acre
March 1 to August 15	Oats	3	4 bushel
	Tall Fescue	1	40 lb.
	Annual Ryegrass	1	40 lb.
	Perennial Ryegrass	1	40 lb.
August 16 to November 1	Rye	1	2 bushel
	Tall Fescue	1	40 lb.
	Annual Ryegrass	1	40 lb.
	Perennial Ryegrass	1	40 lb.
November 1 to Spring Seeding	Wheat	1	40 lb.
	Tall Fescue	1	40 lb.
	Annual Ryegrass	1	40 lb.
	Perennial Ryegrass	1	40 lb.

Use mulch only, seeding practices or dormant seeding
Note: other approved seed species may be substituted.



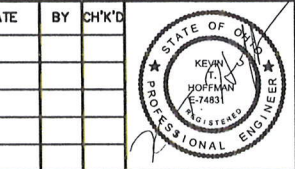
3. CONCRETE WASH OUT AREAS
THE REMOVE OR CONTENTS OF ALL CONCRETE MIXERS, DAMP TRUCKS, OTHER CONVEYANCE EQUIPMENT AND PAVING WHEELS SHALL BE WASHED AND CONCRETE WASH-OUT STRUCTURES CONSTRUCTED AT THE END OF EACH WORKING DAY. THE LENGTH AND WIDTH OF THESE STRUCTURES SHALL BE AS DETERMINED BY THE CONTRACTOR TO FACILITATE THE PARTICULAR EQUIPMENT USED. THESE STRUCTURES SHALL BE CONSTRUCTED ON LEVEL GROUND AT LEAST 100' FROM THE NEAREST WATERCOURSE, DRAINAGE DITCH OR WETLAND. AT NO TIME SHALL THE STRUCTURES BE ALLOWED TO BE MORE THAN 30' IN FALL. THE CONTRACTOR SHALL MAINTAIN THESE POUNDS UNTIL ALL CONCRETE PLACEMENT IS COMPLETE FOR THE PROJECT.
DURING THE STRAW BALES 4" INTO THE SOIL. PROVIDE TWO ROWS OF BALES AS SHOWN ON THE DETAIL. WITH FOUR (4) CORNER WHEELS APPROXIMATELY. SPACING THE STRAW BALES LENGTHWISE WITH BRUSHES AROUND THE SIDES OF THE BALES SO THE WHEELS DO NOT CONTACT THE SOIL. DRIVE 2" X 4" WOOD STAKES THROUGH EACH BALE TO SECURELY ANCHOR THE BALES AND CONNECT ADJACENT BALES. GRAVEL BACKFILL SHALL BE PROVIDED AND TAMPED AROUND THE OUTSIDE PERIMETER OF THE BALES TO PREVENT EROSION AND FLOW AROUND THE BALES.
THE INTENT OF THESE STRUCTURES IS TO COLLECT ALL CONCRETE WASH OUT WATER AND ALLOW IT TO SET TO A SOLID MASS. AFTER OFFICIAL THE SOLID MATERIAL CAN BE REMOVED WITH A LOADER OR EXCAVATOR FOR PROPER DISPOSAL. BASH OUT WILL NOT BE PERMITTED IN ANY OTHER AREAS.
USE THE MINIMUM AMOUNT OF WATER TO WASH THE VEHICLES AND EQUIPMENT. NEVER DISPOSE OF WATER INTO THE STREET. STORM DRAINAGE SHALL BE MAINTAINED. DISPOSE OF SMALL AMOUNTS OF SOLIDS INTO CONCRETE, BRUSH AND WATER IN THE TRUCK. ANY STAKES THAT ARE USED SHALL BE PROPERLY TIED AND INDESTRUCTIBLE.
ADDITIONAL CONCRETE CLEAN-OUT STRUCTURES SHALL BE CONSTRUCTED WITHIN THE SPECIFIED AREA AS NEEDED BASED UPON THE VOLUME OF WASH OUT GENERATED DAILY.



EXISTING UNDERGROUND UTILITIES NOTE:
THE SIZE AND LOCATION, BOTH HORIZONTAL AND VERTICAL OF THE UNDERGROUND UTILITIES SHOWN HEREON, HAVE BEEN OBTAINED BY A SEARCH OF AVAILABLE RECORDS. THE EXACT LOCATION OF UNDERGROUND FEATURES CANNOT BE ACCURATELY, COMPLETELY, AND RELIABLY DEPICTED HEREON. VERIFICATION BY FIELD OBSERVATION HAS BEEN CONDUCTED, WHERE PRACTICAL. HOWEVER, POLARIS ENGINEERING & SURVEYING, INC. DOES NOT GUARANTEE THE COMPLETENESS NOR ACCURACY THEREOF.

NOTE: THIS SURVEY SUBJECT TO CHANGE UPON RECEIPT OF ANY ADDITIONAL AVAILABLE UNDERGROUND UTILITY INFORMATION.

REV. No.	DATE	BY	CHK'D



DATE: 2/20/15
SCALE: HOR. 1"=20'
VERT. N/A
FOLDER: SITE PLAN
FILENAME: SITE PLAN
TAB: SITE PLAN
DRAWN: DER

WROBLEWSKI PARCEL
5470 WOODSIDE ROAD
CITY OF MENTOR - LAKE COUNTY - OHIO



POLARIS ENGINEERING & SURVEYING, INC.
34600 CHARDON ROAD - SUITE D
WILLOUGHBY HILLS, OHIO 44094
(440) 944-4433 (440) 944-3722 (Fax)
www.polaris-es.com

SITE PLAN

CONTRACT No.	
15006	
SHEET	OF
1	1

15001101