

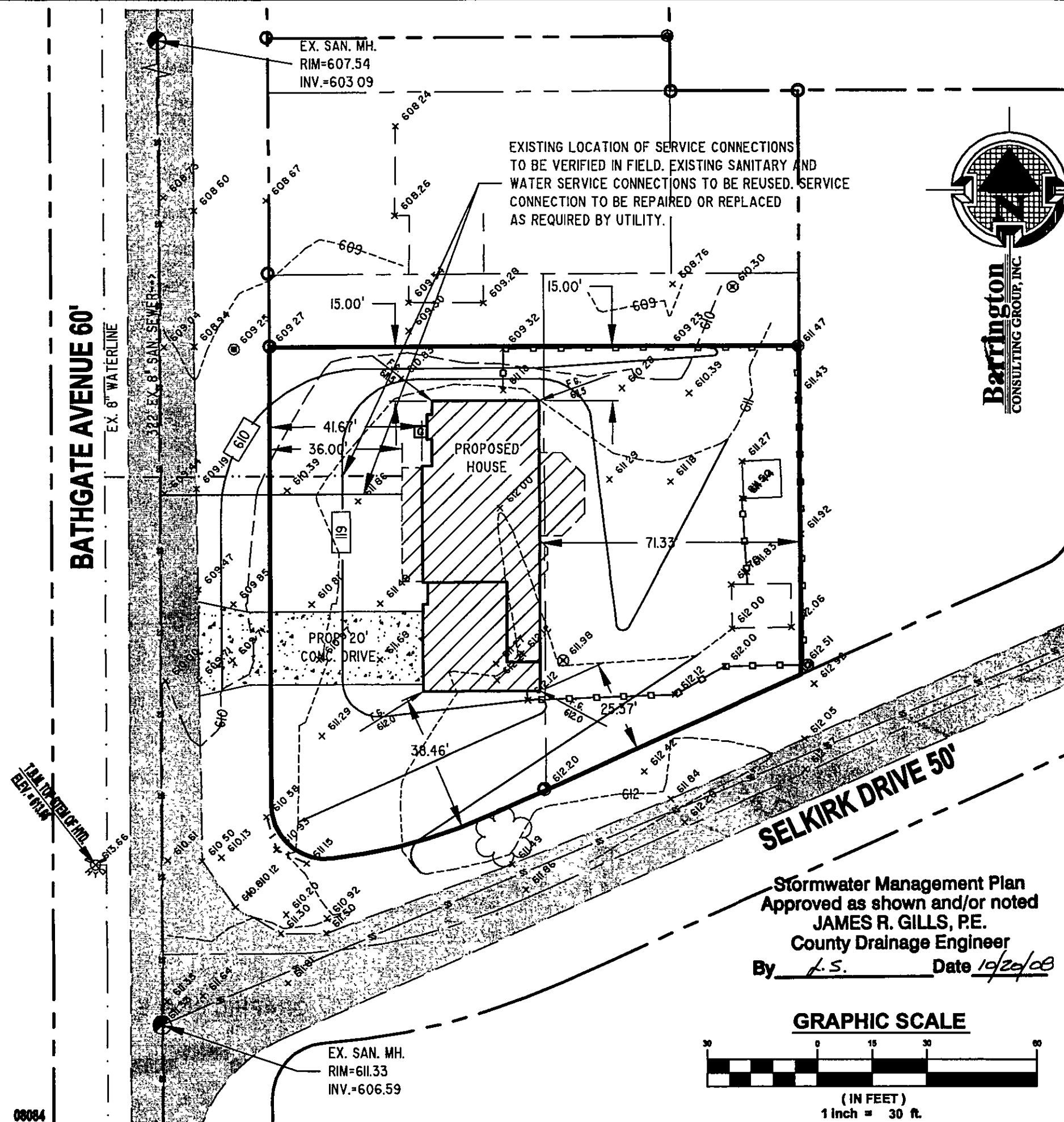
REVISIONS	BY
1. CORRECTED PLANT	DWN

Barrington
CONSULTING GROUP, INC.
9114 TYLER BLVD., MENTOR, OHIO 44060
PHONE 440.265.1260 FAX 440.265.1262
WWW.BARRINGTONCGL.COM



SITE PLAN
1767 BATHGATE AVE., MADISON, OHIO 44057
S/L 824 & 825 MADISON GOLF LAKELANDS VOL. 1 PG. 81
WODYNSKI BUILDERS

DESIGNED BY WSO
CHECKED BY DWN
DATE SEPT. 23, 2008
SCALE 1" = 30'
JOB NO. 08084
SHEET 2/3
OF SHEETS



GENERAL NOTES:

1. BENCHMARK - TOP STEM OF EXISTING FIRE HYDRANT LOCATED AS SHOWN IN SITE PLAN, ELEVATION = 613.68.
2. DRIVEWAY APRON TO BE 6" THICK CONCRETE.
3. ALL DOWNSPOUTS TO BE OUTLETED TO SPLASH BLOCKS.
4. CONTRACTOR RESPONSIBLE FOR CONTACTING THE OHIO UTILITY PROTECTION SERVICE (1.800.382.2764) AND ALL UTILITY COMPANIES A MINIMUM OF 48 HOURS PRIOR TO CONSTRUCTION.
5. THE LOCATION BOTH HORIZONTAL AND VERTICAL OF EXISTING UNDERGROUND UTILITIES SHOWN HEREON, HAVE BEEN OBTAINED BY A DILIGENT AND COMPREHENSIVE SEARCH OF AVAILABLE RECORDS. VERIFICATION BY FIELD OBSERVATION HAS BEEN CONDUCTED WHERE PRACTICAL, HOWEVER, BARRINGTON CONSULTING GROUP, INC. DOES NOT GUARANTEE THE COMPLETENESS, NOR ACCURACY THEREOF.
6. CONTRACTOR SHALL VERIFY ELEVATIONS OF LATERAL INVERTS IN THE FIELD PRIOR TO FOUNDATION EXCAVATION.
7. SEE SHEET 3 FOR EROSION AND SEDIMENT-CONTROL PLAN
8. SEE SHEET 3 FOR SEEDING INFORMATION
9. EXISTING SANITARY AND WATER SERVICE CONNECTIONS TO BE REUSED. SERVICE CONNECTIONS TO BE REPAIRED OR REPLACED AS REQUIRED BY UTILITY.

CERTIFICATION :

"I THE UNDERSIGNED HEREBY CERTIFIES THAT THIS TOPOGRAPHY INDICATED BY 1 FOOT CONTOURS AND ELEVATION SHOWN HEREON REPRESENTS AN ACTUAL SURVEY MADE BY ME ON THE 18th DAY OF SEPTEMBER, 2008 AND THE ELEVATIONS WERE TAKEN AT AN APPROPRIATE INTERVAL AND AS OF THAT DAY THEY EXISTED AS INDICATED HEREON.

"I HEREBY CERTIFY THAT THIS PLAN WAS PREPARED BY ME AND IS CORRECT TO THE BEST OF MY KNOWLEDGE AND BELIEF"

David W. Novak 10/16/2008

DAVID W. NOVAK, P.S. No. 7507
CERT-MADISON/OHIO OCT. 12, 2008

Stormwater Management Plan
Approved as shown and/or noted
JAMES R. GILLS, P.E.
County Drainage Engineer
By *L.S.* Date 10/20/08

GRAPHIC SCALE

