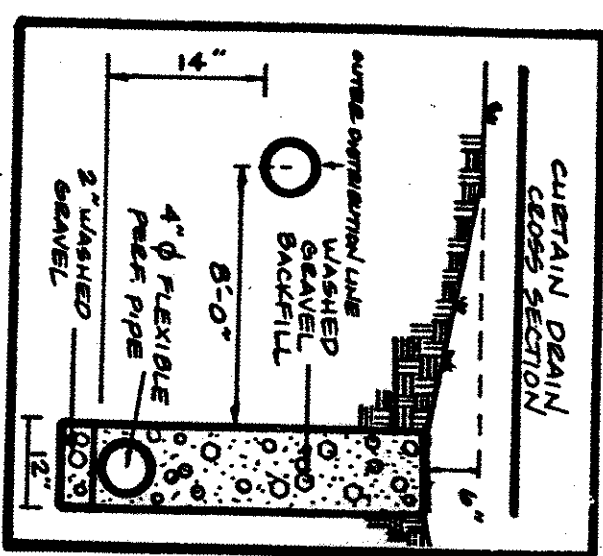
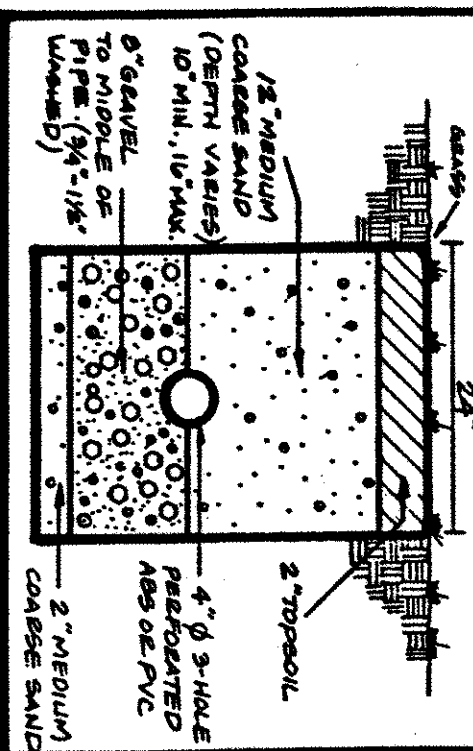


EVAPORATION - TRANSPIRATION TRENCH CROSS SECTION



REVIEWED AND ACCEPTED
LAKE COUNTY GENERAL
HEALTH DISTRICT

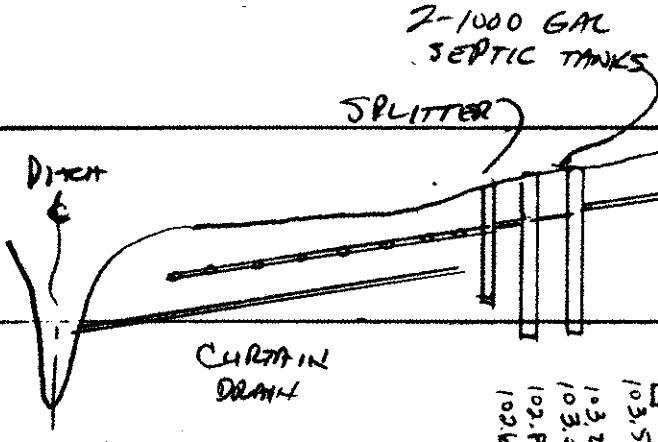
Date: 8/25/97 By: David Lead
Keep trench 18" deep

SEWAGE DISPOSAL PERMIT MUST BE
OBTAINED BY A LAKE COUNTY LICENSED
INSTALLER BEFORE INSTALLATION IS
STARTED.

105
100

FF 107.0

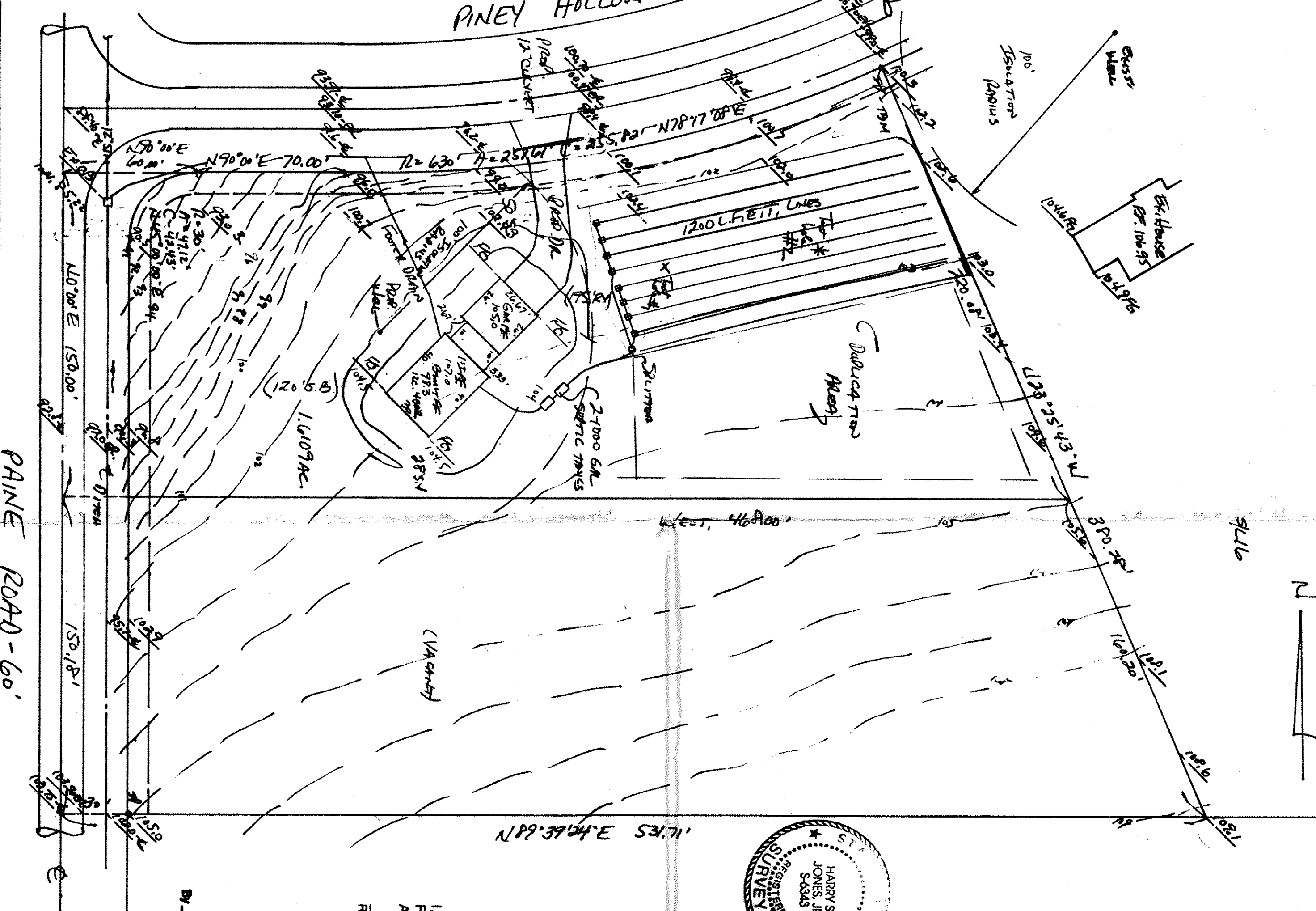
B3M17 7P.3



HYDRAULIC PROFILE

HORIZ: 1"=40' VERT: 1"=5'

PINEY HOLLOW LANE-60'



PINE ROAD-60'

N

SITE PLAN

LEWIS TOWNSHIP, LAKE COUNTY, OHIO

for: VAN LITTLE BUILDERS

CLIENT OWNER

ADDRESS STREET CITY ZIP

SUBDIVISION VOL. NO. NAME

SUBLOT NO. STREET PERM. PARCEL NO. TRACT NO. PAGE

LEGEND

WATER VALVE (GAS) WATER METER (GAS) AS BUILT ELEVATION

INDICATES DIRECTION OF SURFACE DRAINAGE

REMARKS

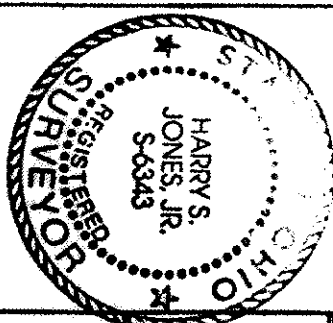
ALL BOUNDARY DATA SHOWN WAS OBTAINED FROM (DEEDS, RECORDED SUBDIVISION PLAT OR OTHER PUBLIC RECORDS)

LOCATIONS AS SHOWN OF ADJACENT WELLS AND SEPTIC TANKS OBTAINED FROM LAKE COUNTY HEALTH DEPARTMENT

DESIGN CERTIFICATION

THIS PLAT WAS PREPARED BY ME, AND IS CORRECT TO THE BEST OF MY KNOWLEDGE AND BELIEF.

NAME SURVEYOR REGISTRATION NO.



CHECK LIST

NO. OF BEDROOMS

NO. OF BATHS

NO. OF KITCHENS

NO. OF LIVING ROOMS

NO. OF DINING ROOMS

NO. OF SLEEPING PORCHES

NO. OF ATTACHED GARAGES

NO. OF DETACHED GARAGES

NO. OF POOLS

NO. OF HOT TUBS

NO. OF STORM DRAINAGE

NO. OF SEWER DRAINAGE

NO. OF WATER MAINS

NO. OF SANITARY MAINS

NO. OF STORM MAINS

NO. OF SEWER MAINS

NO. OF WATER MAINS

NO. OF SANITARY MAINS

NO. OF STORM MAINS

NO. OF SEWER MAINS

PLAN PREPARED BY:

BABCOCK • JONES & ASSOCIATES, INC.

PAINESVILLE, OHIO

NO. DATE BY

1 7/14/97 BT

2 7/14/97 BT

3 7/14/97 BT

4 7/14/97 BT

5 7/14/97 BT

6 7/14/97 BT

7 7/14/97 BT

8 7/14/97 BT

9 7/14/97 BT

10 7/14/97 BT

11 7/14/97 BT

12 7/14/97 BT

13 7/14/97 BT

14 7/14/97 BT

15 7/14/97 BT

16 7/14/97 BT

17 7/14/97 BT

18 7/14/97 BT

19 7/14/97 BT

20 7/14/97 BT

21 7/14/97 BT

22 7/14/97 BT

23 7/14/97 BT

24 7/14/97 BT

25 7/14/97 BT

26 7/14/97 BT

27 7/14/97 BT

28 7/14/97 BT

29 7/14/97 BT

30 7/14/97 BT

31 7/14/97 BT

32 7/14/97 BT

33 7/14/97 BT

34 7/14/97 BT

35 7/14/97 BT

36 7/14/97 BT

37 7/14/97 BT

38 7/14/97 BT

39 7/14/97 BT

40 7/14/97 BT

41 7/14/97 BT

42 7/14/97 BT

43 7/14/97 BT

44 7/14/97 BT

45 7/14/97 BT

46 7/14/97 BT

47 7/14/97 BT

48 7/14/97 BT

49 7/14/97 BT

50 7/14/97 BT

51 7/14/97 BT

52 7/14/97 BT

53 7/14/97 BT

54 7/14/97 BT

55 7/14/97 BT

56 7/14/97 BT

57 7/14/97 BT

58 7/14/97 BT

59 7/14/97 BT

60 7/14/97 BT

61 7/14/97 BT

62 7/14/97 BT

63 7/14/97 BT

64 7/14/97 BT

65 7/14/97 BT

66 7/14/97 BT

67 7/14/97 BT

68 7/14/97 BT

69 7/14/97 BT

70 7/14/97 BT

71 7/14/97 BT

72 7/14/97 BT

73 7/14/97 BT

74 7/14/97 BT

75 7/14/97 BT

76 7/14/97 BT

77 7/14/97 BT

78 7/14/97 BT

79 7/14/97 BT

80 7/14/97 BT

81 7/14/97 BT

82 7/14/97 BT

83 7/14/97 BT

84 7/14/97 BT

85 7/14/97 BT

86 7/14/97 BT

87 7/14/97 BT

88 7/14/97 BT

89 7/14/97 BT

90 7/14/97 BT

91 7/14/97 BT

92 7/14/97 BT

93 7/14/97 BT

94 7/14/97 BT

95 7/14/97 BT

96 7/14/97 BT

97 7/14/97 BT

98 7/14/97 BT

99 7/14/97 BT

100 7/14/97 BT

"AS BUILT" CERTIFICATION

I, HEREBY CERTIFY THAT THE CIRCLED GRADES ARE EXISTING FINISH GRADES CHECKED IN THE FIELD ON 19 19

AND ARE CORRECT TO THE BEST OF MY KNOWLEDGE AND BELIEF.

REGISTERED SURVEYOR REG. NO.

THOMAS P. GILLES, P.E.

Lake County Engineer

Grading Plan Approved = 100.30

as shown and/or noted

THOMAS P. GILLES, P.E.

Lake County Engineer

ROOF DRAINS SHALL DISCHARGE TO SPLASH BLOCKS.

"I, the undersigned hereby certify that this topography indicated by 6", 1" or 2" contours, and elevations shown herein represent an actual field survey made by me on the 1st day of July, 1997 and that the elevations were taken at appropriate intervals and that as of that date they existed as indicated herein."

Name Harry Jones S-6343 Reg. No.