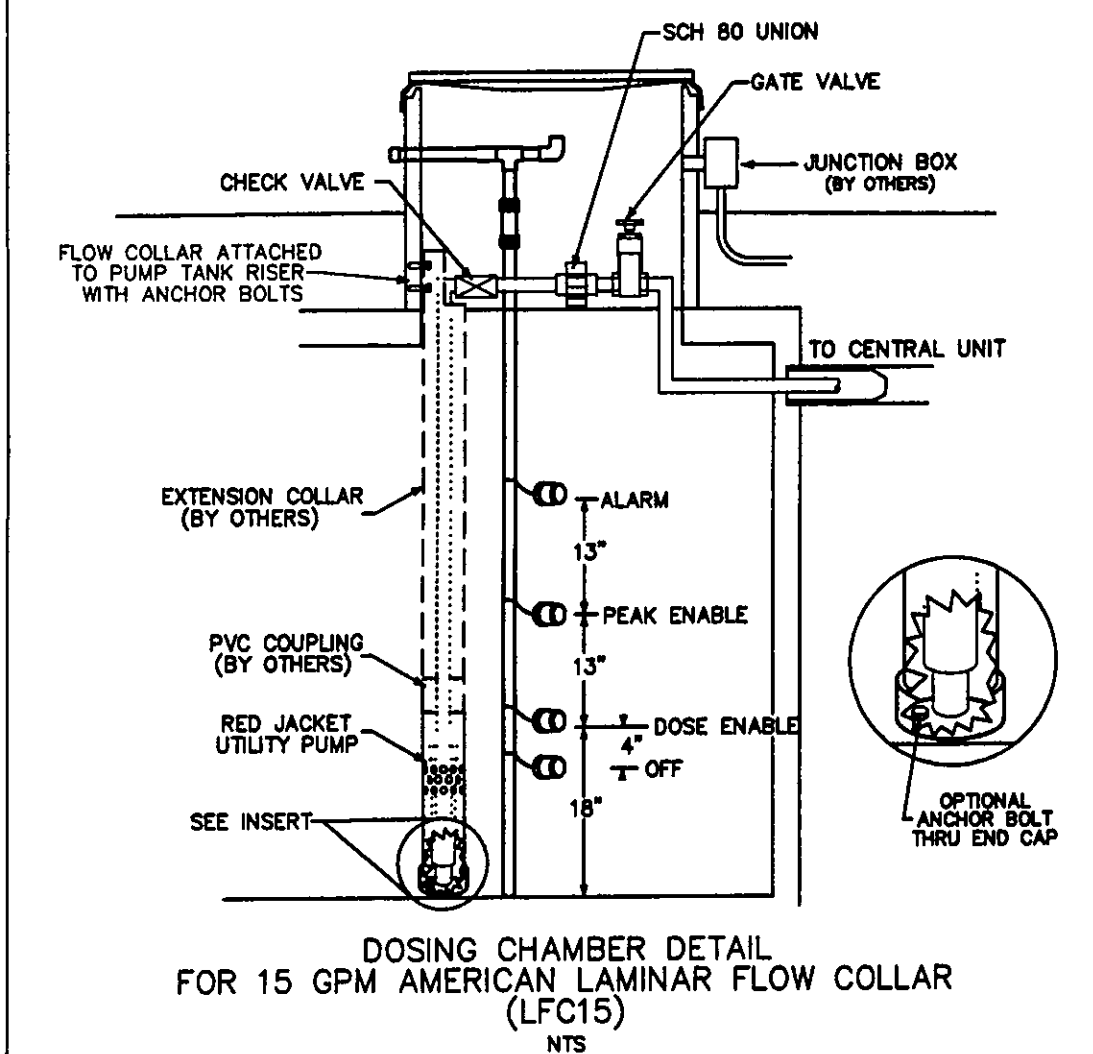


AERMOTOR MODEL: TEP20-50-115

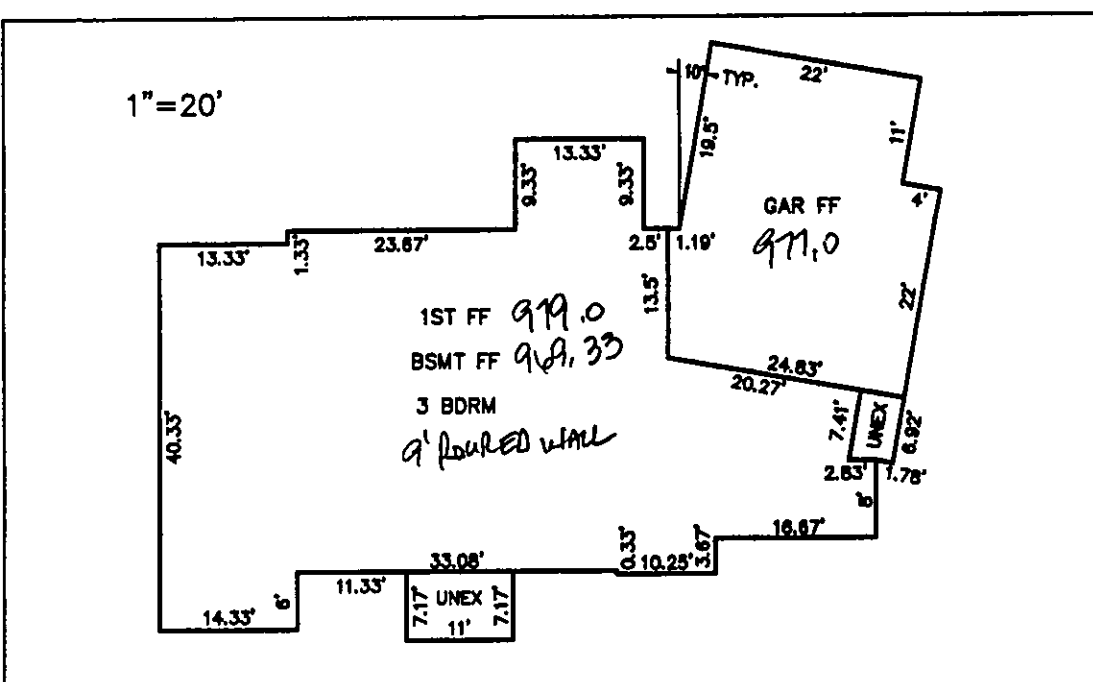
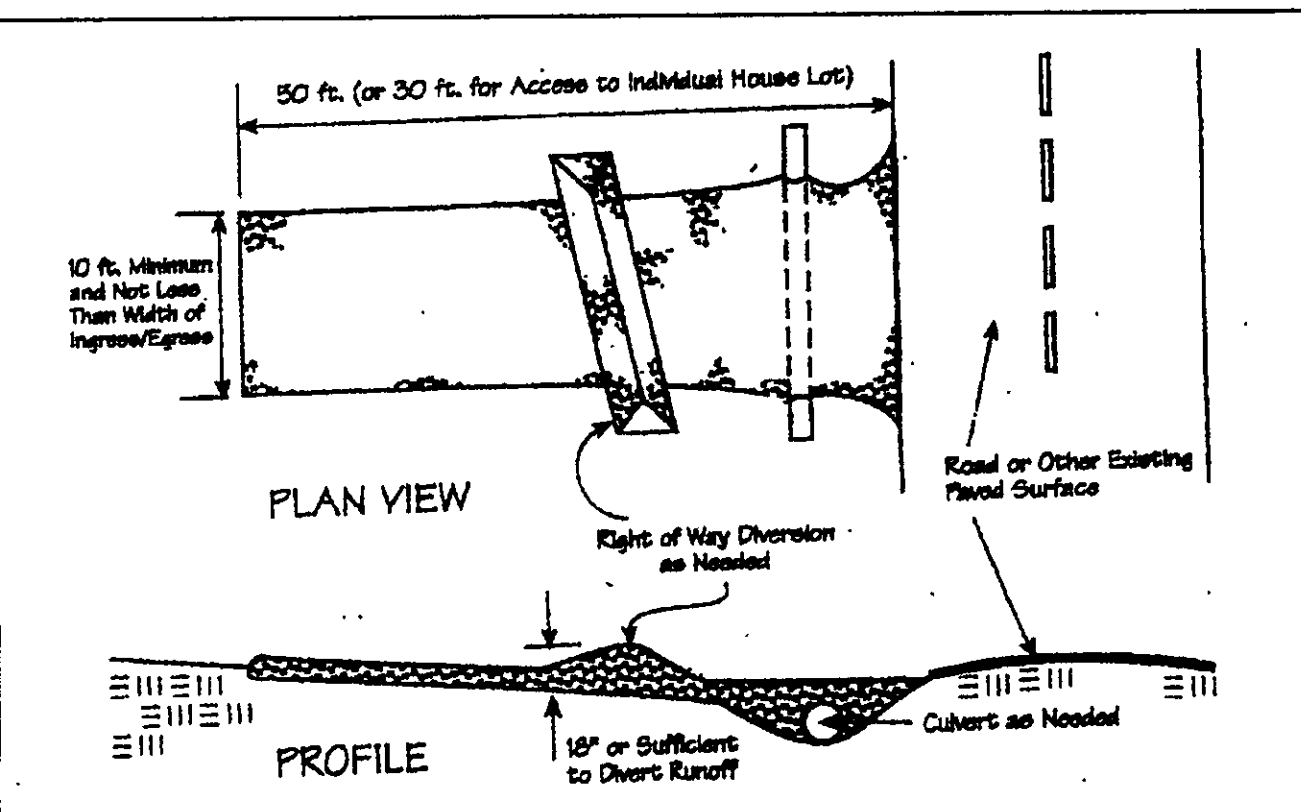
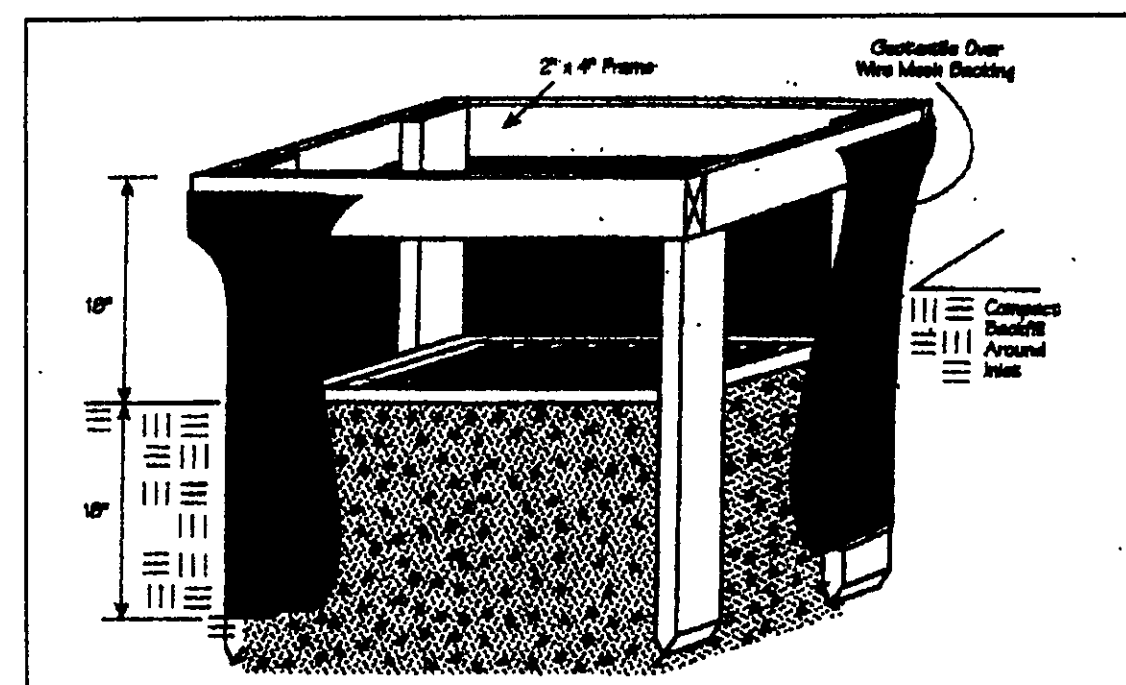
1.25" DISCHARGE
0.5 HORSEPOWER
115 VOLT
12.0 AMPS

1/16" MAX. SOLIDS HANDLING
1 PHASE
60 HZ
MULTI-STAGE
CENTRIFUGAL



Temporary Seeding Species Selection			
Seeding Dates	Species	Lb./1,000 ft. ²	Per Ac.
March 1 to August 15	Oats	3	4 bushel
	Tall Fescue	1	40 lb.
	Annual Ryegrass	1	40 lb.
	Perennial Ryegrass	1	40 lb.
	Tall Fescue	1	40 lb.
August 16 to November 1	Rye	3	2 bushel
	Tall Fescue	1	40 lb.
	Annual Ryegrass	1	40 lb.
	Perennial Ryegrass	1	40 lb.
	Tall Fescue	1	40 lb.
November 1 to Spring Seeding	Wheat	3	2 bushel
	Tall Fescue	1	40 lb.
	Annual Ryegrass	1	40 lb.
	Perennial Ryegrass	1	40 lb.
	Tall Fescue	1	40 lb.

Note: Other approved seed species may be substituted.



SURVEYOR CERTIFICATION

THIS PLAT REPRESENTS A SURVEY WHICH MEETS STANDARDS FOR A BOUNDARY SURVEY IN THE STATE OF OHIO AS SPECIFIED IN THE ADMINISTRATIVE CODE CHAPTER 4733-37

SURVEYED ON Feb. 7, 2016 BY William Babcock UNDER THE SUPERVISION OF James R. Gills, P.E., P.S. # 6343, ALL IRON PINS SHOWN HEREON WERE EITHER FOUND OR SET AS NOTED.

Henry Jones P.S. # 6343 DATE: 2/15/16

THE TOPOGRAPHY, INDICATED BY 1' CONTOURS, AND ELEVATIONS SHOWN HEREON REPRESENT AN ACTUAL FIELD SURVEY MADE BY William Babcock ON 2/1/16. THE ELEVATIONS WERE TAKEN AT APPROPRIATE INTERVALS AND AS OF THE ABOVE DATE THEY EXISTED AS INDICATED HEREON.

Henry Jones P.S. # 6343 DATE: 2/15/16

REV. NO.	DESCRIPTION	DATE	BY	CHK'D
1	REVISED PER L.C. HENRY DEOT	3/16/06	HT	HT

DRIP DISTRIBUTION PLAN SUBMITTAL REVIEW

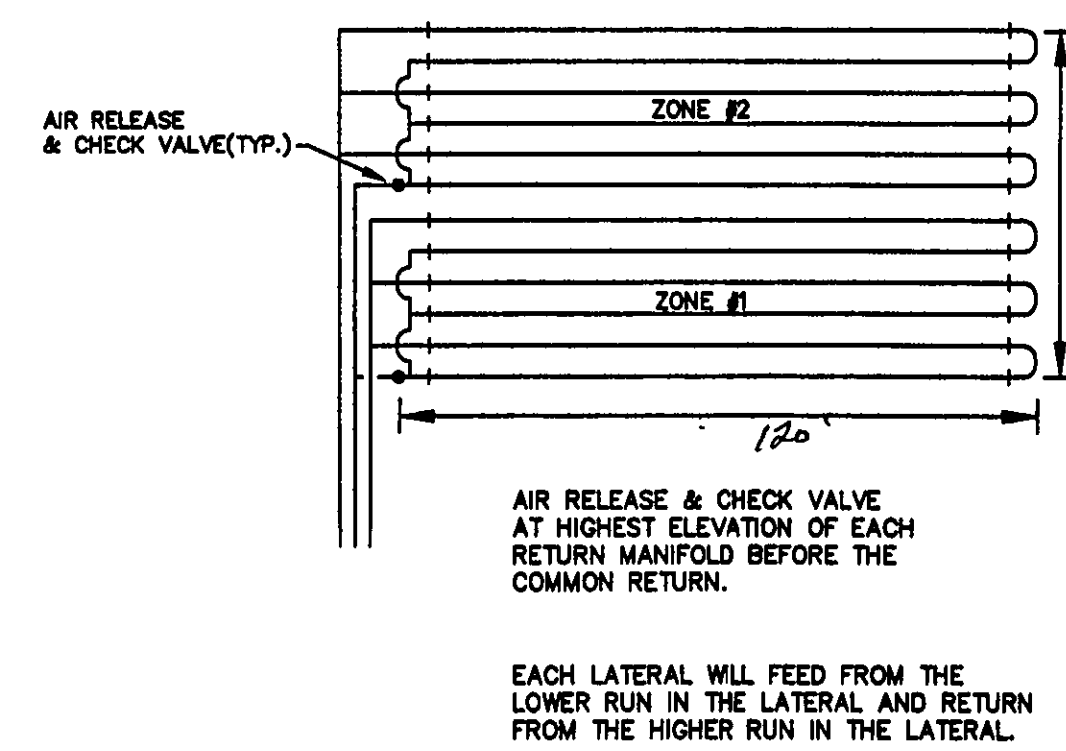
Drip distribution area has been field verified and protected with marking tape. Plans submitted to LGHD and meet design criteria. All calculations verified and accurate.

Date	Name
3/17/16	Daniel Lark
3/17/16	Daniel Lark
3/17/16	Daniel Lark

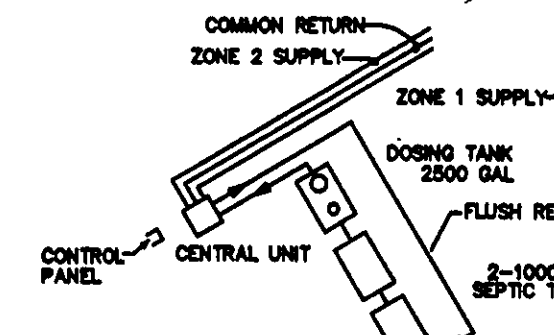
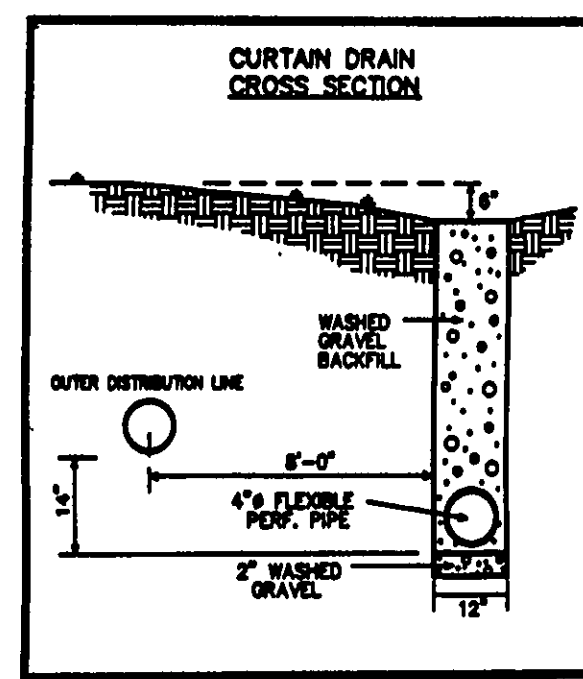
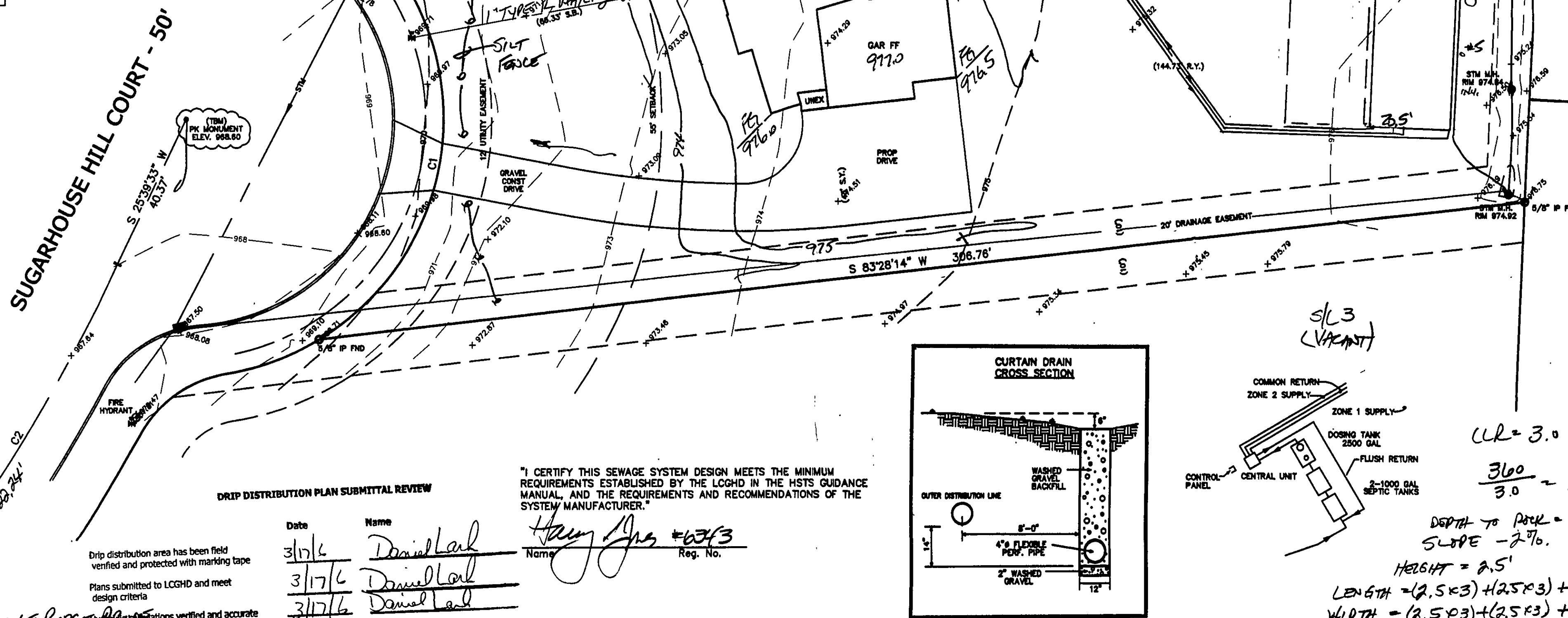
"I CERTIFY THIS SEWAGE SYSTEM DESIGN MEETS THE MINIMUM REQUIREMENTS ESTABLISHED BY THE LGHD IN THE HSTS GUIDANCE MANUAL, AND THE REQUIREMENTS AND RECOMMENDATIONS OF THE SYSTEM MANUFACTURER."

Henry Jones #6343 Reg. No.

NOT TO SCALE



EACH LATERAL WILL FEED FROM THE LOWER RUN IN THE LATERAL AND RETURN FROM THE HIGHER RUN IN THE LATERAL.



CLR = 3.0
 $\frac{360}{3.0} = 120 \text{ LF}$
DEPTH TO BACK = 17"
SLOPE = 2.7%
HEIGHT = 2.5'
LENGTH = (2.5 x 3) + (2.5 x 3) + 120 = 135'
WIDTH = (2.5 x 3) + (2.5 x 3) + 55' = 20.5'

CURVE	LENGTH	RADIUS	TANGENT	CHORD	BEARING	DELTA
C1	111.20	65.00	74.81	98.13	N08°36'02"E	98°01'28"
C2	100.84	500.00	50.59	100.67	N31°26'13"E	11°33'20"

TBM - PK MONUMENT
ELEV - 968.60

EXISTING UTILITIES NOTE:
THE SIZE AND LOCATION, BOTH HORIZONTAL AND VERTICAL, OF THE UNDERGROUND UTILITIES SHOWN HEREON, HAVE BEEN OBTAINED BY A SEARCH OF AVAILABLE RECORDS. VERIFICATION BY FIELD OBSERVATION HAS BEEN CONDUCTED WHERE PRACTICAL. HOWEVER, BABCOCK, JONES AND ASSOCIATES, INC. DOES NOT GUARANTEE THE COMPLETENESS NOR ACCURACY THEREOF.



Stormwater Management Plan
Approved and/or noted
JAMES R. GILLS, P.E.
County Drainage Engineer
By James R. Gills Date 3/29/16

DATE	2/8/06
DESIGN BY	H.J.
DRAWN BY	B.P.
APPROVED BY	H.J.
CREW CHIEF	W.B.

SITE PLAN
FOR
MR. & MRS. JAMES DWYER
S/L 4 SUGARHOUSE HILL DR. (STONECREEK SUB)
CITY OF KIRTLAND LAKE COUNTY STATE OF OHIO

SCALE	1"=20'
JOB NO.	03-057-04
SHEET	1
OF	2