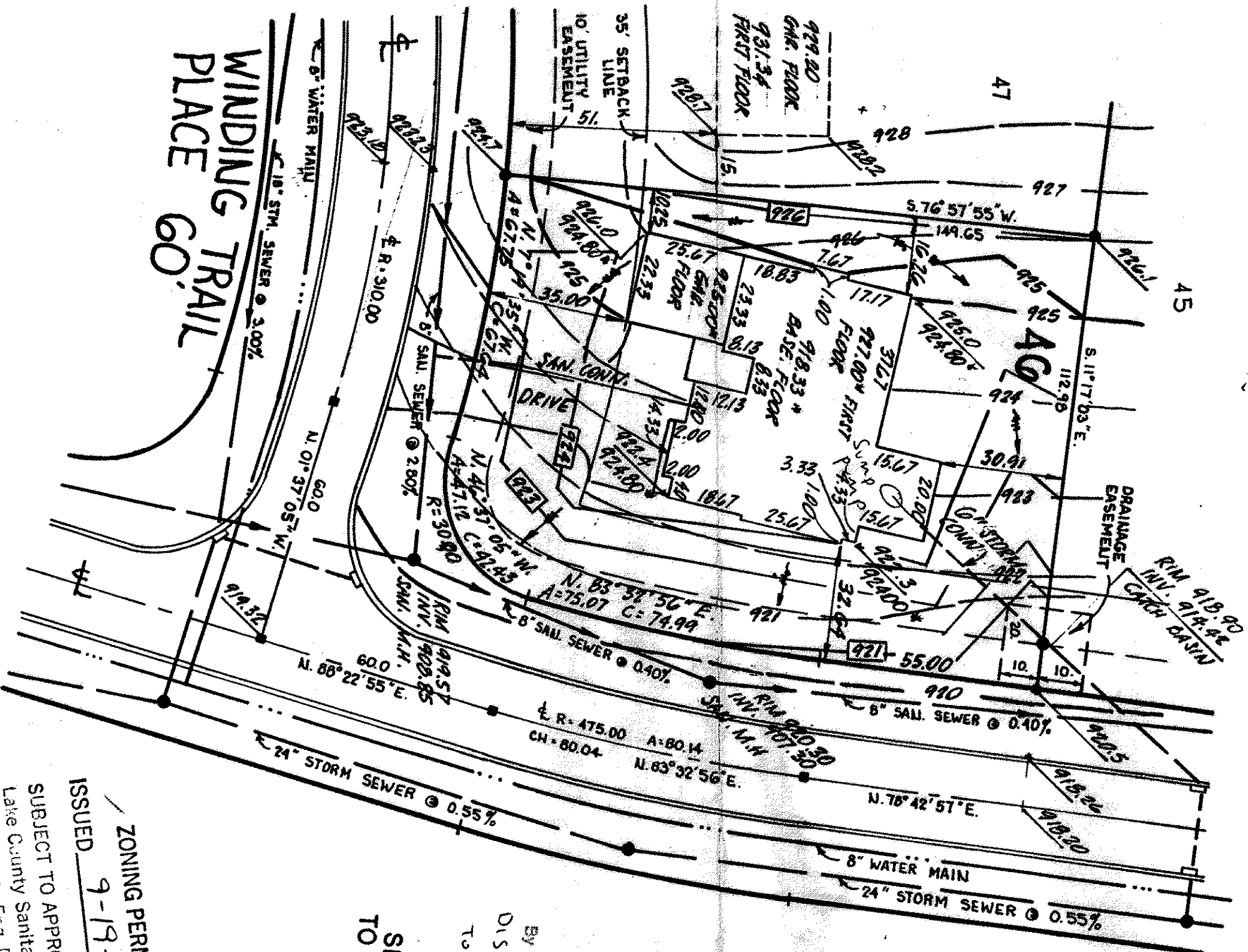


SITE IMPROVEMENT PLAN

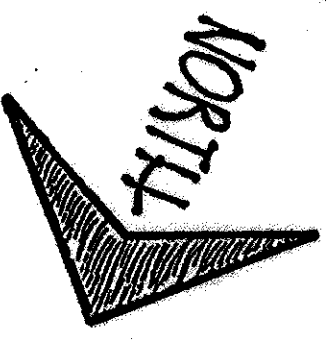
SUBLOT NO. 46 IN QUAIL HOLLOW NO. 2 BEING PART OF ORIGINAL CONCORD TOWNSHIP LOT NOS. 3 & 4 IN TRACT NO. 2. NOW IN THE TOWNSHIP OF CONCORD, COUNTY OF LAKE, OHIO.

FOR: PAYNE & PAYNE BUILDERS, INC.



NOTES:

- 918.75 INDICATES EXISTING ELEVATION
- 922.00 INDICATES PROPOSED ELEVATION
- 918 — INDICATES EXISTING CONTOUR LINE
- 918 — INDICATES PROPOSED CONTOUR LINE
- INDICATES DIRECTION OF FLOW OF SURFACE WATER AFTER FINISH GRADING
- T.B.M. TOP OF HYDRANT OPPOSITE SUBLOT NO. 45, MOUNTAIN QUAIL PLACE. ELEVATION 920.98.



AUGUST, 1994
SCALE: 1" = 30'

Created by Approved
as shown and/or noted
THOMAS P. GILLES, P.E.
Lake County Engineer
By 6114 Date 9/20/94
Discharge Sump Pump
to Storm Sewer
ROOF DRAINS
SHALL DISCHARGE
TO SPLASH BLOCKS.

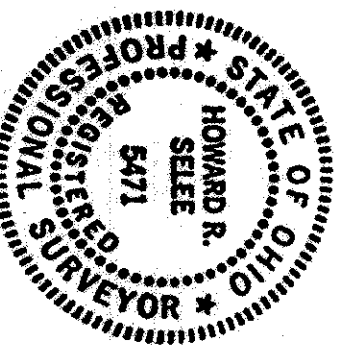
#0994-7978

ZONING PERMIT
ISSUED 9-19-94

SUBJECT TO APPROVAL BY:
☐ Lake County Sanitary Eng.
☒ Lake County Eng. Dept.
☐ Lake County Planning Comm.
☒ Lake County Bldg. Dept.

DIMENSIONS SHOWN HEREON ARE EXPRESSED IN FEET AND DECIMAL PARTS THEREOF. DIMENSIONS WERE FOUND OR SET AS INDICATED HEREON, MEASUREMENTS WERE MADE TO AN ASSURED METHOD AND ARE FOR THE SOLE PURPOSE OF DESCRIBING THE RELATIVE ANGULAR VALUE BETWEEN LINES, ALL OF WHICH I CERTIFY TO BE CORRECT TO THE BEST OF MY KNOWLEDGE AND BELIEF.

HOWARD R. SEELE, REGISTERED SURVEYOR 5471



HOWARD R. SEELE & ASSOCIATES, INC.
Professional Land Surveyors
9701 Brookpark Road, Suite 251
CLEVELAND, OHIO 44129
94699 - 46