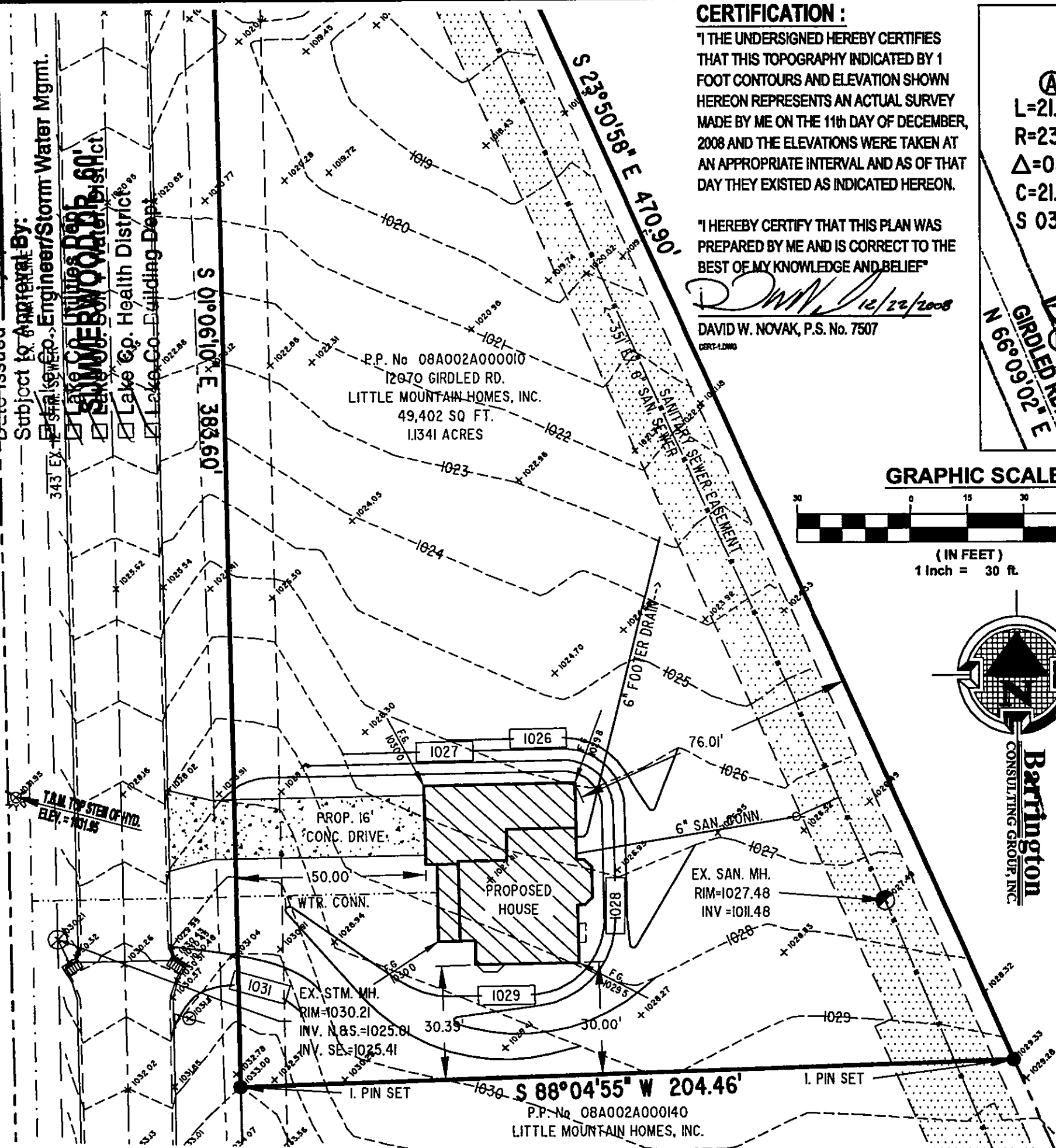


# CONCORD TOWNSHIP ZONING OFFICE

Zoning Permit # 45102  
Date Issued 12/22/2008

Subject to Approval By: Engineer/Storm Water Mgmt.

343 EX. 12' SAN. SEWER  
Lake Co. Utilities Dept.  
Sanitary Sewer District  
Lake Co. Health District  
Lake Co. Building Dept.



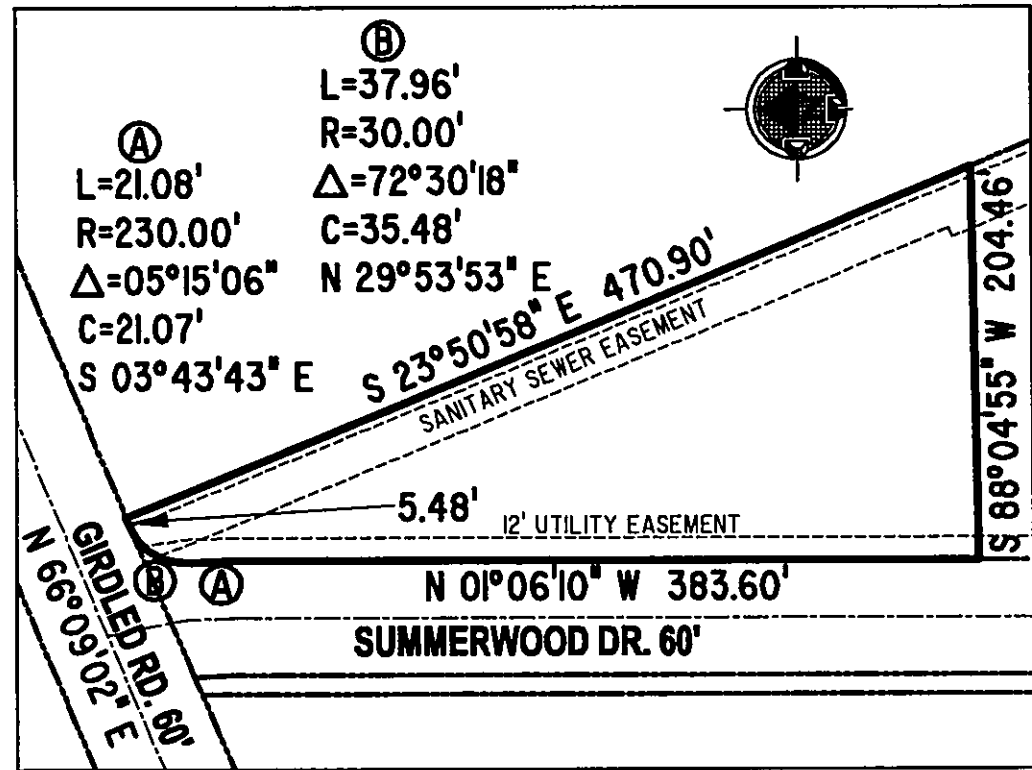
## CERTIFICATION :

"I THE UNDERSIGNED HEREBY CERTIFIES THAT THIS TOPOGRAPHY INDICATED BY 1 FOOT CONTOURS AND ELEVATION SHOWN HEREON REPRESENTS AN ACTUAL SURVEY MADE BY ME ON THE 11th DAY OF DECEMBER, 2008 AND THE ELEVATIONS WERE TAKEN AT AN APPROPRIATE INTERVAL AND AS OF THAT DAY THEY EXISTED AS INDICATED HEREON.

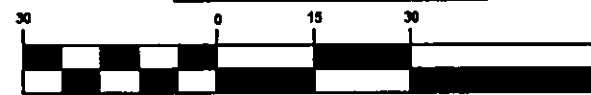
"I HEREBY CERTIFY THAT THIS PLAN WAS PREPARED BY ME AND IS CORRECT TO THE BEST OF MY KNOWLEDGE AND BELIEF"

David W. Novak 12/22/2008

DAVID W. NOVAK, P.S. No. 7507  
CERT-12000



## GRAPHIC SCALE



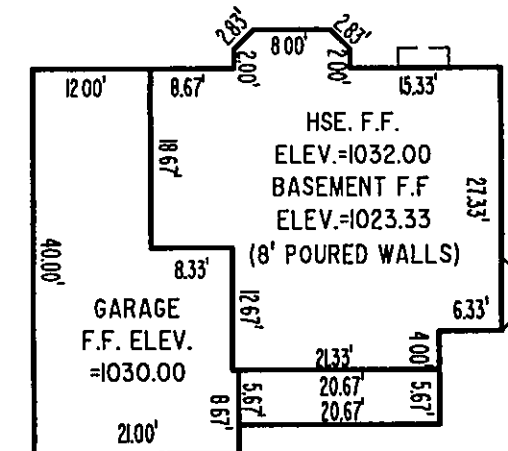
(IN FEET)  
1 inch = 30 ft.



Barrington  
CONSULTING GROUP, INC.

## GENERAL NOTES:

1. BENCHMARK - TOP STEM OF EXISTING FIRE HYDRANT LOCATED AS SHOWN IN SITE PLAN, ELEVATION = 1031.95.
2. DRIVEWAY APRON TO BE 6" THICK CONCRETE.
3. ALL DOWNSPOUTS TO BE OUTLETED TO SPLASH BLOCKS.
4. CONTRACTOR RESPONSIBLE FOR CONTACTING THE OHIO UTILITY PROTECTION SERVICE (1.800.362.2764) AND ALL UTILITY COMPANIES A MINIMUM OF 48 HOURS PRIOR TO CONSTRUCTION.
5. THE LOCATION BOTH HORIZONTAL AND VERTICAL OF EXISTING UNDERGROUND UTILITIES SHOWN HEREON, HAVE BEEN OBTAINED BY A DILIGENT AND COMPREHENSIVE SEARCH OF AVAILABLE RECORDS. VERIFICATION BY FIELD OBSERVATION HAS BEEN CONDUCTED WHERE PRACTICAL, HOWEVER, BARRINGTON CONSULTING GROUP, INC. DOES NOT GUARANTEE THE COMPLETENESS, NOR ACCURACY THEREOF.
6. CONTRACTOR SHALL VERIFY ELEVATIONS OF LATERAL INVERTS IN THE FIELD PRIOR TO FOUNDATION EXCAVATION.
7. SEE SHEET 2 FOR EROSION AND SEDIMENT-CONTROL PLAN
8. SEE SHEET 2 FOR SEEDING INFORMATION



REVISIONS	BY

**Barrington**  
CONSULTING GROUP, INC.  
9114 TYLER BLVD., MENTOR, OHIO 44060  
PHONE 440.285.1260 FAX 440.285.1262  
www.BarringtonCGI.com



**SITE PLAN**  
P.P. No. 08A002A000010 SUMMERWOOD DR., CONCORD, OHIO 44077  
SUMMERWOOD SUBDIVISION PH. 1 VOL. 48 PG. 30  
**LITTLE MOUNTAIN HOMES, INC.**

DESIGNED BY	W.S.
CHECKED BY	DWN
DATE	DEC. 11, 2008
SCALE	1" = 30'
JOB NO.	08036
SHEET	1/2