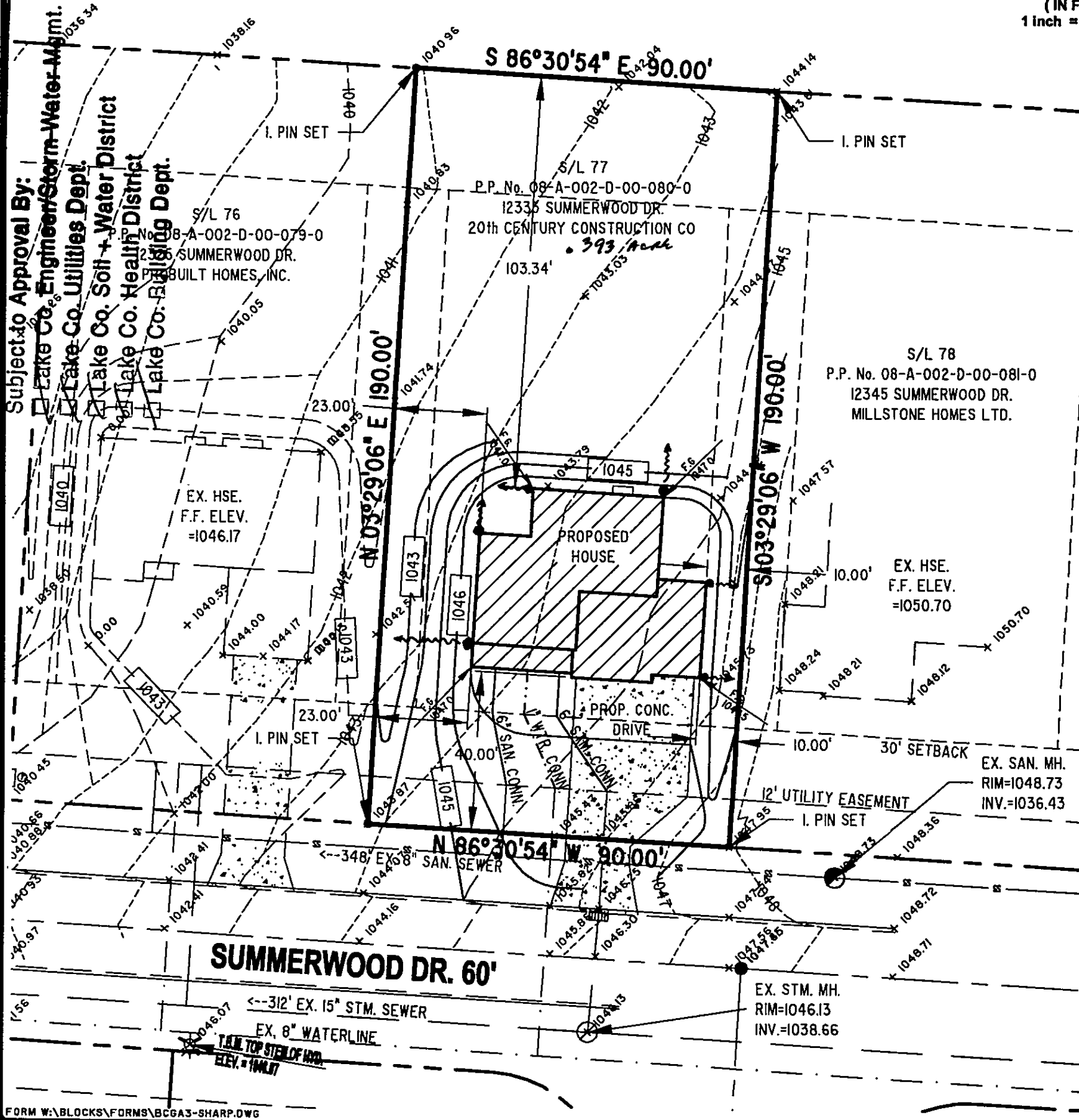
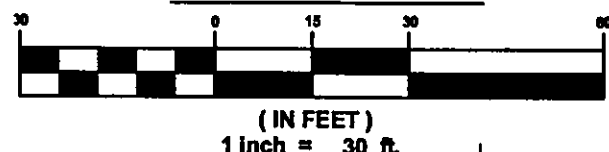


CONCORD TOWNSHIP ZONING OFFICE  
Zoning Permit # 0708-1358  
Date Issued 7/3/08



GRAPHIC SCALE



GENERAL NOTES:

1. BENCHMARK - TOP STEM OF EXISTING FIRE HYDRANT LOCATED IN FRONT SUBLOT 98, ELEVATION = 1046.07.
2. DRIVEWAY APRON TO BE 6" THICK CONCRETE.
3. ALL DOWNSPOUTS TO BE OUTLETTED TO SPLASH BLOCKS.
4. CONTRACTOR RESPONSIBLE FOR CONTACTING THE OHIO UTILITY PROTECTION SERVICE (1.800.362.2784) AND ALL UTILITY COMPANIES A MINIMUM OF 48 HOURS PRIOR TO CONSTRUCTION.
5. THE LOCATION BOTH HORIZONTAL AND VERTICAL OF EXISTING UNDERGROUND UTILITIES SHOWN HEREON, HAVE BEEN OBTAINED BY A DILIGENT AND COMPREHENSIVE SEARCH OF AVAILABLE RECORDS. VERIFICATION BY FIELD OBSERVATION HAS BEEN CONDUCTED WHERE PRACTICAL, HOWEVER, BARRINGTON CONSULTING GROUP, INC. DOES NOT GUARANTEE THE COMPLETENESS, NOR ACCURACY THEREOF.
6. CONTRACTOR SHALL VERIFY ELEVATIONS OF LATERAL INVERTS IN THE FIELD PRIOR TO FOUNDATION EXCAVATION.
7. SEE SHEET 2 FOR EROSION AND SEDIMENT-CONTROL PLAN
8. SEE SHEET 2 FOR SEEDING INFORMATION

CERTIFICATION :

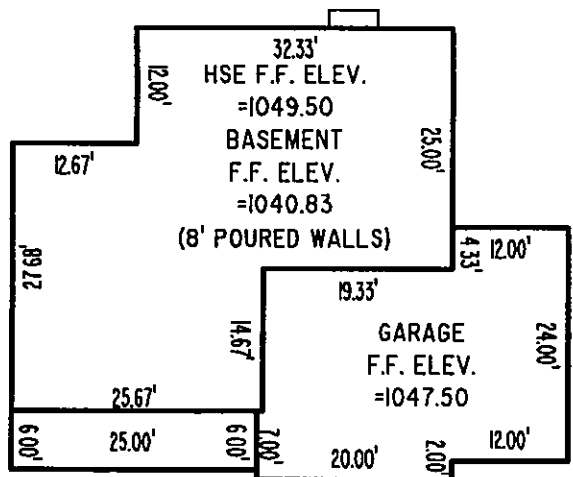
"I THE UNDERSIGNED HEREBY CERTIFIES THAT THIS TOPOGRAPHY INDICATED BY 1 FOOT CONTOURS AND ELEVATION SHOWN HEREON REPRESENTS AN ACTUAL SURVEY MADE BY ME ON THE 12th DAY OF JUNE, 2008 AND THE ELEVATIONS WERE TAKEN AT AN APPROPRIATE INTERVAL AND AS OF THAT DAY THEY EXISTED AS INDICATED HEREON.

"I HEREBY CERTIFY THAT THIS PLAN WAS PREPARED BY ME AND IS CORRECT TO THE BEST OF MY KNOWLEDGE AND BELIEF"

*David W. Novak*  
DAVID W. NOVAK, P.S. No. 7507  
CERT-10786

HOUSE DETAIL:

SCALE 1" = 20'



Stormwater Management Plan  
Approved as shown and/or noted  
JAMES R. GILLS, P.E.  
County Drainage Engineer

REVISIONS	BY

**Barrington**  
CONSULTING GROUP, INC.  
9114 TYLER BLVD., MENTOR, OHIO 44060  
PHONE 440.265.1249 FAX 440.265.1263  
www.BarringtonCGL.com



**SITE PLAN**  
12335 SUMMERWOOD DR., CONCORD TWP., OHIO 44077  
S/L 77 SUMMERWOOD SUBDIVISION PH2 VOL. 54 PG. 28  
**LITTLE MOUNTAIN HOMES, INC.**

WSD  
CHECKED  
DWN  
DATE  
JUNE 19, 2008  
SCALE  
1" = 30'  
JOB NO.  
07143-077  
SHEET  
1/2  
OF SHEETS

07143-077