

REVISIONS	BY
REVISED BY COUNTY	WSO
FEB. 26, 2009	

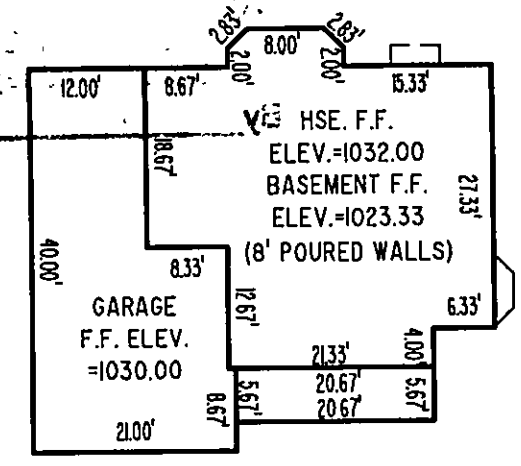
**Barrington**  
CONSULTING GROUP, INC.  
9114 TYLER BLVD., MENTOR, OHIO 44060  
PHONE 440.265.1260 FAX 440.265.1262  
www.BarringtonCGI.com



**SITE PLAN**  
P.P. No 08A002A00010 SUMMERWOOD DR., CONCORD, OHIO 44077  
SUMMERWOOD SUBDIVISION PL.1 VOL. 48 PG. 30  
**LITTLE MOUNTAIN HOMES, INC**

DAVID W. NOVAK
CHECKED
DWN
DATE
DEC. 11, 2008
SCALE
1" = 30'
JOB NO.
08036-B
SHEET
1/3
OF SHEETS

08036-B



**HOUSE DETAIL:**  
SCALE 1" = 10'

**GENERAL NOTES:**

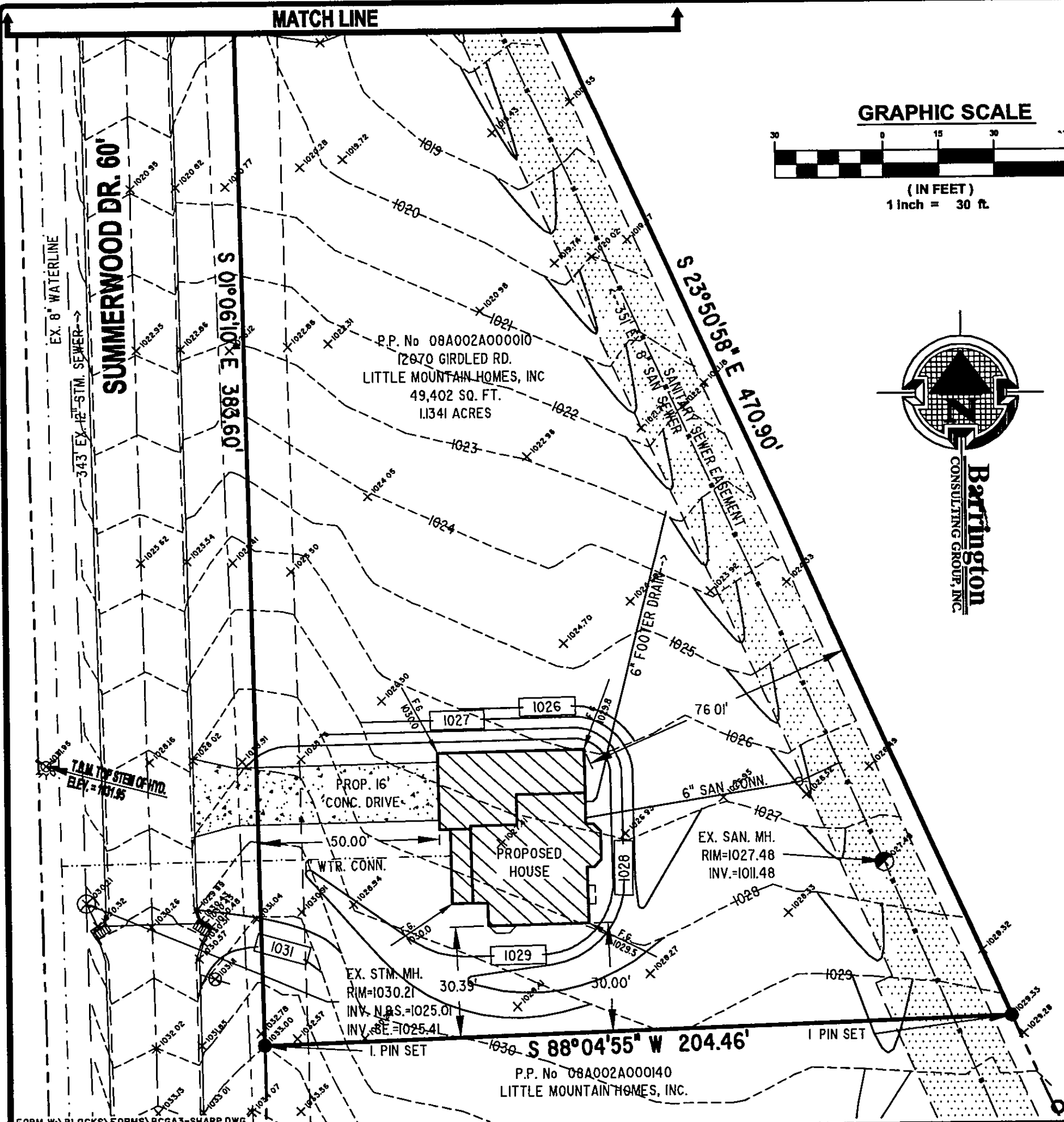
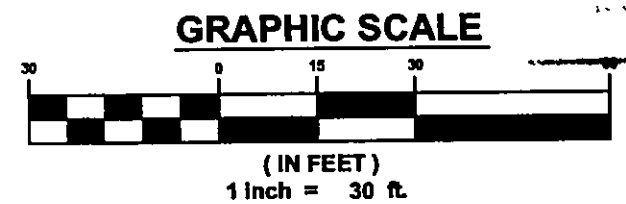
1. BENCHMARK - TOP STEM OF EXISTING FIRE HYDRANT LOCATED AS SHOWN IN SITE PLAN, ELEVATION = 1031.95.
2. DRIVEWAY APRON TO BE 6" THICK CONCRETE.
3. ALL DOWNSPOUTS TO BE OUTLETED TO SPLASH BLOCKS.
4. CONTRACTOR RESPONSIBLE FOR CONTACTING THE OHIO UTILITY PROTECTION SERVICE (1.800.362.2764) AND ALL UTILITY COMPANIES A MINIMUM OF 48 HOURS PRIOR TO CONSTRUCTION.
5. THE LOCATION BOTH HORIZONTAL AND VERTICAL OF EXISTING UNDERGROUND UTILITIES SHOWN HEREON, HAVE BEEN OBTAINED BY A DILIGENT AND COMPREHENSIVE SEARCH OF AVAILABLE RECORDS. VERIFICATION BY FIELD OBSERVATION HAS BEEN CONDUCTED WHERE PRACTICAL, HOWEVER, BARRINGTON CONSULTING GROUP, INC. DOES NOT GUARANTEE THE COMPLETENESS, NOR ACCURACY THEREOF.
6. CONTRACTOR SHALL VERIFY ELEVATIONS OF LATERAL INVERTS IN THE FIELD PRIOR TO FOUNDATION EXCAVATION.
7. SEE SHEET 2 FOR EROSION AND SEDIMENT-CONTROL PLAN
8. SEE SHEET 2 FOR SEEDING INFORMATION

**CERTIFICATION :**

"I THE UNDERSIGNED HEREBY CERTIFIES THAT THIS TOPOGRAPHY INDICATED BY 1 FOOT CONTOURS AND ELEVATION SHOWN HEREON REPRESENTS AN ACTUAL SURVEY MADE BY ME ON THE 11th DAY OF DECEMBER, 2008 AND THE ELEVATIONS WERE TAKEN AT AN APPROPRIATE INTERVAL AND AS OF THAT DAY THEY EXISTED AS INDICATED HEREON.

"I HEREBY CERTIFY THAT THIS PLAN WAS PREPARED BY ME AND IS CORRECT TO THE BEST OF MY KNOWLEDGE AND BELIEF"

*David W. Novak* 3/4/2009  
DAVID W. NOVAK, P.S. No. 7507  
CERT-12002



W:\08036\08036-01-Mentor\08036-01-Mentor.dwg, 3/4/2009 8:05:37 AM, Copyright Barrington Consulting Group