

# SITE PLAN

FOR THE

PYRAMID HOMES  
CONCORD TOWNSHIP  
LAKE COUNTY, OHIO

ZONING PERMIT #0695-8188

ISSUED 6/16/95

SUBJECT TO APPROVAL BY:  
Lake County Sanitary Eng. ☐  
Lake County Eng. Dept. ☒  
Lake County Planning Comm. ☐  
Lake County Bldg. Dept. ☒

PROPOSED  
STURBRIDGE SUBD. No. 2

## CERTIFICATION

"I, the undersigned hereby certify that this topography, indicated by 6", 1', or 2' contours, and elevations shown hereon represent an actual field survey made by me on the 1 day of May, 1995 and that the elevations were taken at appropriate intervals and that as of that date they existed as indicated hereon."

DAVID K. MOSTOLLER

R.S. # 6949

## LEGEND

SANITARY MANHOLE ○

STORM MANHOLE ●

INLET OR CATCH BASIN ■

HYDRANT ▲

EXISTING CONTOUR -----

PROPOSED CONTOUR \_\_\_\_\_

EXIST. ELEV.  $\frac{100.0}{100.0}$  PROP. ELEV.

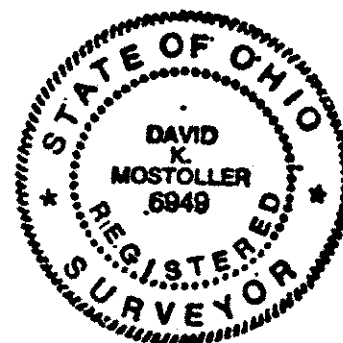
AS BUILT ELEVATION (100.0)

DIRECTION OF DRAINAGE →

## NOTES :

▲ APPROACH WILL BE 6" THICK, SIDEWALKS WILL BE 6" AT APRON & 4" FOR THE REST.

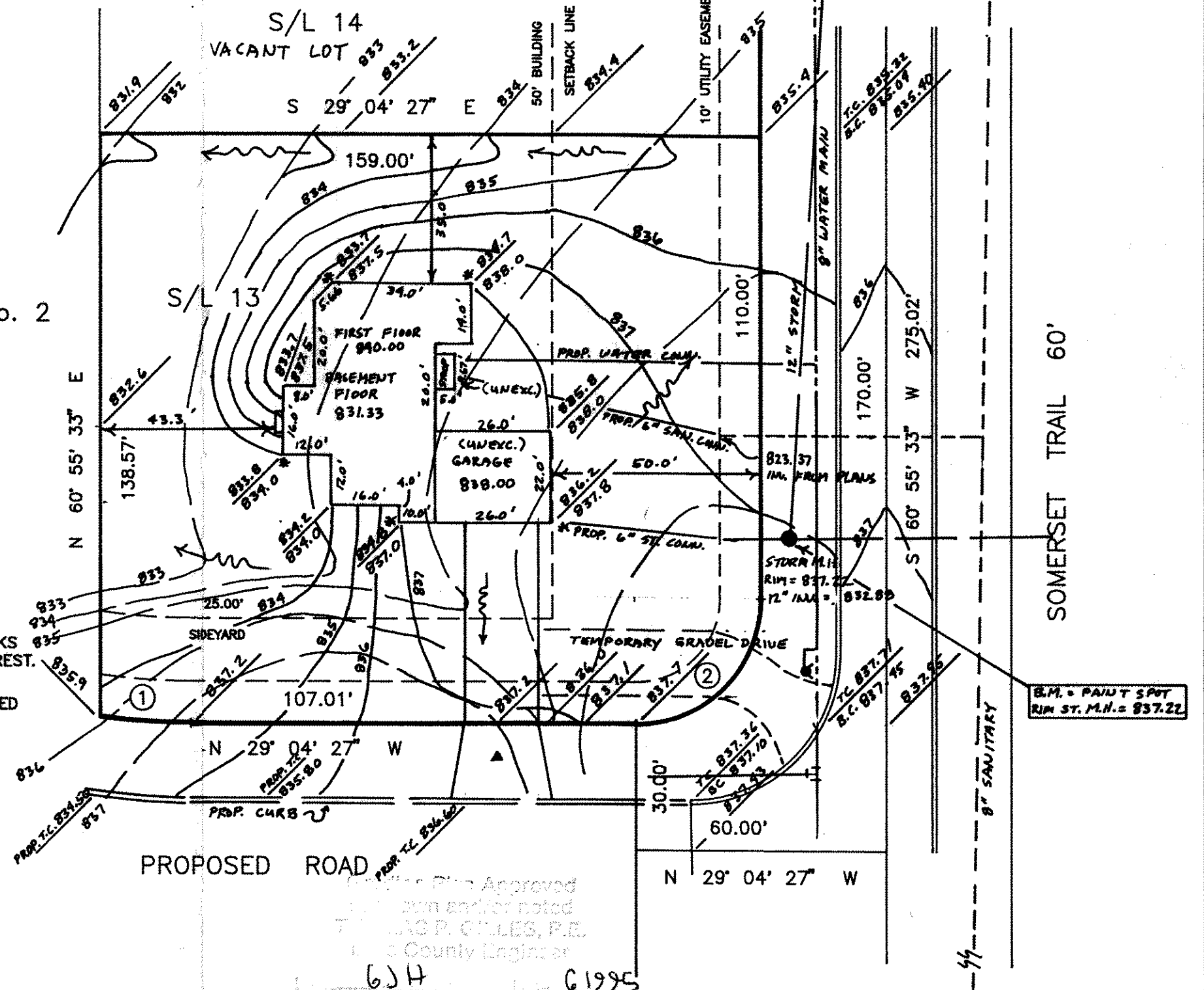
\* ALL DOWNSPOUTS ARE TO BE OUTLETED ON SPLASH BLOCKS.



① RADIUS = 170.00'  
ARC = 22.05'  
DELTA = 07° 25' 51"  
CHORD = 22.03'  
CHORD BRG. = N 25° 21' 31" W

② RADIUS = 30.00'  
ARC = 47.12'  
DELTA = 90° 00' 00"  
CHORD = 42.43'  
CHORD BRG. = N 74° 04' 27" W

STURBRIDGE SUBD. No. 1  
VOL. 20, PAGE 20



PREPARED BY:

FISHER AND ASSOCIATES INC.  
ENGINEERS - SURVEYORS - CONSULTANTS

SCALE : 1" = 30'

DATE : MAY, 1995