

REVISIONS	BY
REVISED GRADING AUG. 06, 2008	WSO

Barrington
CONSULTING GROUP, INC.
9114 TYLER BLVD., MENTOR, OHIO 44060
PHONE 440.205.1260 FAX 440.205.1262
www.BarringtonCGI.com

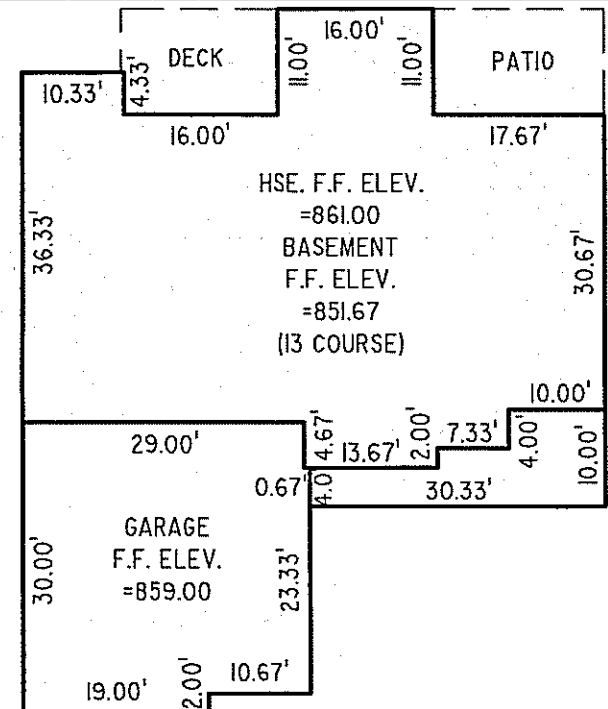


SITE PLAN
S/L 32A SARAH LEE DR., CONCORD TWP., OHIO 44077
CALI WOODS SUBDIVISION No. 2 VOL. 31 PG. 4
RALPH VICTOR CONSTRUCTION INC.

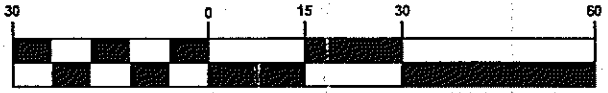
DRAWN WSO
CHECKED DWN
DATE JULY 31, 2008
SCALE 1" = 30'
JOB NO. 08065-032A
SHEET 1/2
OF SHEETS

Stormwater Management Plan
Approved as shown and/or noted
JAMES R. GILLS, P.E.
County Drainage Engineer
By *J.S.* Date 8/27/08

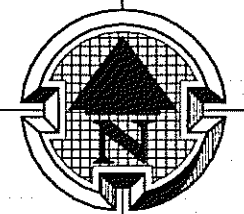
08065-032A



GRAPHIC SCALE

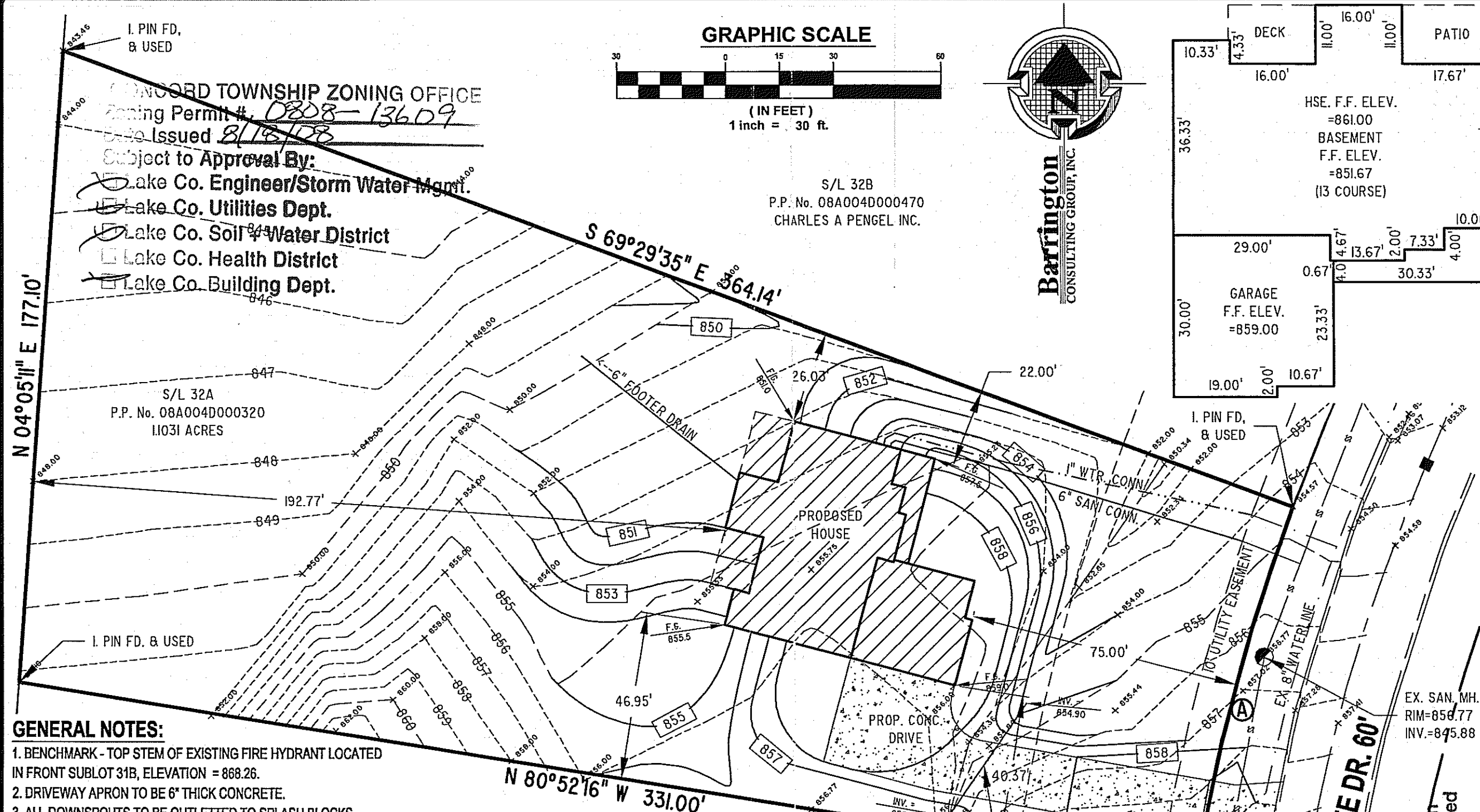


(IN FEET)
1 inch = 30 ft.



Barrington
CONSULTING GROUP, INC.

S/L 32B
P.P. No. 08A004D000470
CHARLES A PENGEL INC.



GENERAL NOTES:

1. BENCHMARK - TOP STEM OF EXISTING FIRE HYDRANT LOCATED IN FRONT SUBLOT 31B, ELEVATION = 868.26.
2. DRIVEWAY APRON TO BE 6" THICK CONCRETE.
3. ALL DOWNSPOUTS TO BE OUTLETED TO SPLASH BLOCKS.
4. CONTRACTOR RESPONSIBLE FOR CONTACTING THE OHIO UTILITY PROTECTION SERVICE (1.800.362.2764) AND ALL UTILITY COMPANIES A MINIMUM OF 48 HOURS PRIOR TO CONSTRUCTION.
5. THE LOCATION BOTH HORIZONTAL AND VERTICAL OF EXISTING UNDERGROUND UTILITIES SHOWN HEREON, HAVE BEEN OBTAINED BY A DILIGENT AND COMPREHENSIVE SEARCH OF AVAILABLE RECORDS. VERIFICATION BY FIELD OBSERVATION HAS BEEN CONDUCTED WHERE PRACTICAL, HOWEVER, BARRINGTON CONSULTING GROUP, INC. DOES NOT GUARANTEE THE COMPLETENESS, NOR ACCURACY THEREOF.
6. CONTRACTOR SHALL VERIFY ELEVATIONS OF LATERAL INVERTS IN THE FIELD PRIOR TO FOUNDATION EXCAVATION.
7. SEE SHEET 2 FOR EROSION AND SEDIMENT-CONTROL PLAN
8. SEE SHEET 2 FOR SEEDING INFORMATION

CERTIFICATION:

"I THE UNDERSIGNED HEREBY CERTIFIES THAT THIS TOPOGRAPHY INDICATED BY 1 FOOT CONTOURS AND ELEVATION SHOWN HEREON REPRESENTS AN ACTUAL SURVEY MADE BY ME ON THE 24th DAY OF JULY, 2008 AND THE ELEVATIONS WERE TAKEN AT AN APPROPRIATE INTERVAL AND AS OF THAT DAY THEY EXISTED AS INDICATED HEREON.

"I HEREBY CERTIFY THAT THIS PLAN WAS PREPARED BY ME AND IS CORRECT TO THE BEST OF MY KNOWLEDGE AND BELIEF"

David W. Novak 8/6/2008
DAVID W. NOVAK, P.S. No. 7507
CERT-1.DWG

①
L=105.27'
R=530.00'
Δ=11°22'47"
C=105.09'
N 14°49'04" E

S/L 32B
P.P. No. 08A004D000460
CHARLES A PENGAL INC.