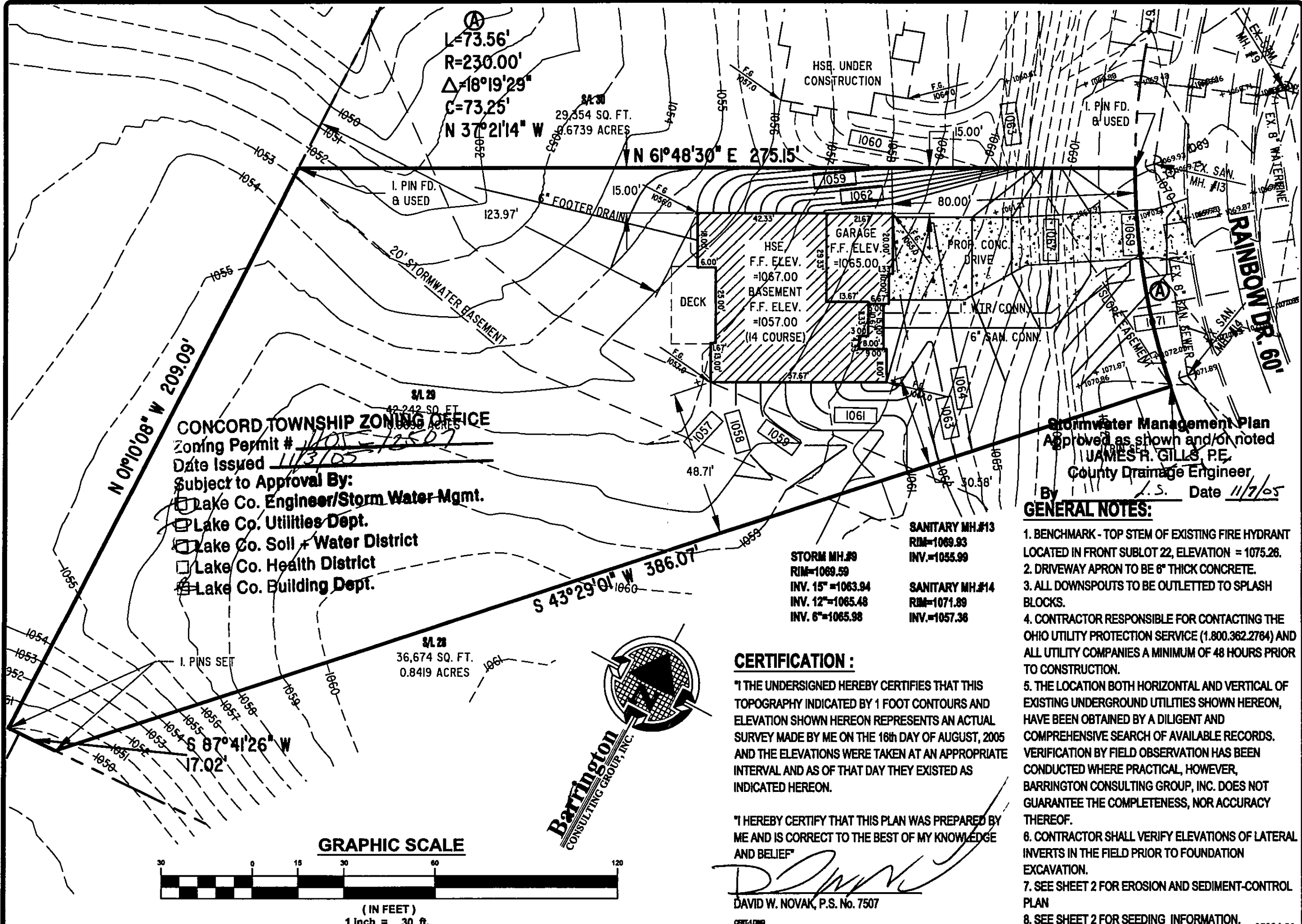


W:\2005\0604\Sublot 2906094-28.dwg, 11/02/2006 03:02:32 PM, Copyright Barrington Consulting Group



REVISIONS	BY

Barrington
CONSULTING GROUP, INC.
9114 TYLER BLVD., MENTOR, OHIO 44060
PHONE 440.283.1268 FAX 440.283.1262
BCG@BarringtonCGL.com



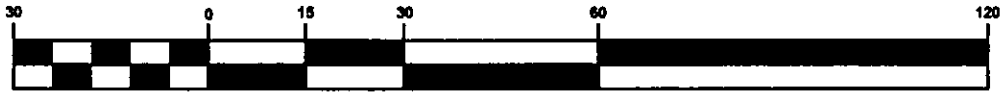
SITE PLAN
SL 28 RAINBOW DR. CONCORD TWP. OHIO 44077
NATURE PRESERVE SOUTH VOL. 48 PG. 24

EYE-WILL DEVELOPMENT

WSD
CHECKED
DWN
DATE
NOV. 02, 2005
SCALE
1" = 30'
JOB NO.
05084-29
SHEET
1/2

OF SHEETS

GRAPHIC SCALE



(IN FEET)
1 inch = 30 ft.

CERTIFICATION :

"I THE UNDERSIGNED HEREBY CERTIFIES THAT THIS TOPOGRAPHY INDICATED BY 1 FOOT CONTOURS AND ELEVATION SHOWN HEREON REPRESENTS AN ACTUAL SURVEY MADE BY ME ON THE 16th DAY OF AUGUST, 2005 AND THE ELEVATIONS WERE TAKEN AT AN APPROPRIATE INTERVAL AND AS OF THAT DAY THEY EXISTED AS INDICATED HEREON.

"I HEREBY CERTIFY THAT THIS PLAN WAS PREPARED BY ME AND IS CORRECT TO THE BEST OF MY KNOWLEDGE AND BELIEF"

DAVID W. NOVAK, P.S. No. 7507

Stormwater Management Plan
Approved as shown and/or noted
JAMES R. GILLS, P.E.
County Drainage Engineer
By J.S. Date 11/7/05
GENERAL NOTES:

1. BENCHMARK - TOP STEM OF EXISTING FIRE HYDRANT LOCATED IN FRONT SUBLOT 22, ELEVATION = 1075.26.
2. DRIVEWAY APRON TO BE 6" THICK CONCRETE.
3. ALL DOWNSPOUTS TO BE OUTLETED TO SPLASH BLOCKS.
4. CONTRACTOR RESPONSIBLE FOR CONTACTING THE OHIO UTILITY PROTECTION SERVICE (1.800.362.2764) AND ALL UTILITY COMPANIES A MINIMUM OF 48 HOURS PRIOR TO CONSTRUCTION.
5. THE LOCATION BOTH HORIZONTAL AND VERTICAL OF EXISTING UNDERGROUND UTILITIES SHOWN HEREON, HAVE BEEN OBTAINED BY A DILIGENT AND COMPREHENSIVE SEARCH OF AVAILABLE RECORDS. VERIFICATION BY FIELD OBSERVATION HAS BEEN CONDUCTED WHERE PRACTICAL, HOWEVER, BARRINGTON CONSULTING GROUP, INC. DOES NOT GUARANTEE THE COMPLETENESS, NOR ACCURACY THEREOF.
6. CONTRACTOR SHALL VERIFY ELEVATIONS OF LATERAL INVERTS IN THE FIELD PRIOR TO FOUNDATION EXCAVATION.
7. SEE SHEET 2 FOR EROSION AND SEDIMENT-CONTROL PLAN
8. SEE SHEET 2 FOR SEEDING INFORMATION.