

# GENERAL NOTES:

1. BENCHMARK - TOP STEM OF EXISTING FIRE HYDRANT LOCATED IN FRONT SUBLOT 16, ELEVATION = 1049.30.
2. DRIVEWAY APRON TO BE 6\"
3. ALL DOWNSPOUTS TO BE CONNECTED INTO STORM SEWER.
4. CONTRACTOR RESPONSIBLE FOR CONTACTING THE OHIO UTILITY PROTECTION SERVICE (1.800.362.2764) AND ALL UTILITY COMPANIES A MINIMUM OF 48 HOURS PRIOR TO CONSTRUCTION.
5. THE LOCATION BOTH HORIZONTAL AND VERTICAL OF EXISTING UNDERGROUND UTILITIES SHOWN HEREON, HAVE BEEN OBTAINED BY A DILIGENT AND COMPREHENSIVE SEARCH OF AVAILABLE RECORDS. VERIFICATION BY FIELD OBSERVATION HAS BEEN CONDUCTED WHERE PRACTICAL, HOWEVER, BARRINGTON CONSULTING GROUP, INC. DOES NOT GUARANTEE THE COMPLETENESS, NOR ACCURACY THEREOF.
6. CONTRACTOR SHALL VERIFY ELEVATIONS OF LATERAL INVERTS IN THE FIELD PRIOR TO FOUNDATION EXCAVATION.
7. SEE SHEET 2 FOR EROSION AND SEDIMENT-CONTROL PLAN
8. SEE SHEET 2 FOR SEEDING INFORMATION

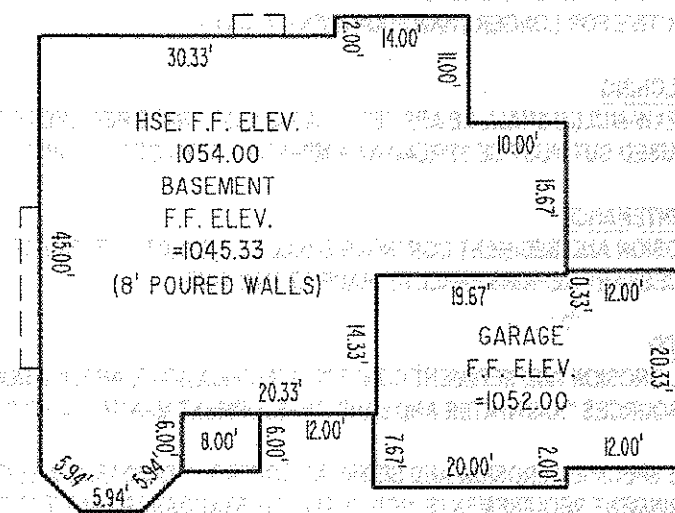
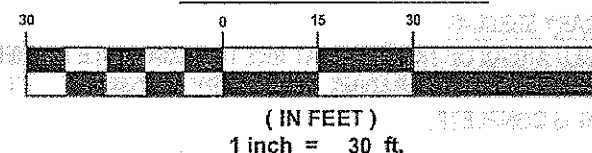
# CERTIFICATION :

"I THE UNDERSIGNED HEREBY CERTIFIES THAT THIS TOPOGRAPHY INDICATED BY 1 FOOT CONTOURS AND ELEVATION SHOWN HEREON REPRESENTS AN ACTUAL SURVEY MADE BY ME ON THE 27th DAY OF MAY, 2009 AND THE ELEVATIONS WERE TAKEN AT AN APPROPRIATE INTERVAL AND AS OF THAT DAY THEY EXISTED AS INDICATED HEREON.

"I HEREBY CERTIFY THAT THIS PLAN WAS PREPARED BY ME AND IS CORRECT TO THE BEST OF MY KNOWLEDGE AND BELIEF"

DAVID W. NOVAK, P.S. No. 7507  
 CERT-LENG 9/22/2010

# GRAPHIC SCALE



# CONCORD TOWNSHIP ZONING OFFICE

Zoning Permit # 0910-19301  
 Date Issued 8-27-10  
 Subject to Approval By:  
☒ Lake Co. Engineer/Storm Water Mgmt.  
☒ Lake Co. Utilities Dept.  
☒ Lake Co. Soil + Water District  
☒ Lake Co. Health District  
☒ Lake Co. Building Dept.

REVISIONS	BY

**Barrington**  
 CONSULTING GROUP, INC.  
 9114 TYLER BLVD., MENTOR, OHIO 44060  
 PHONE 440.205.1260 FAX 440.205.1262  
 www.BarringtonCG.com



**SITE PLAN**  
 11141 POTTERS TRAIL, CONCORD TWP, OHIO 44077  
 CAMDEN CREEK ESTATES PH. 1 VOL. 62 PG. 27  
**PROBUILT HOMES, INC.**

DRAWN W50
CHECKED DWN
DATE SEPT 16, 2010
SCALE 1" = 30'
JOB NO. 09037-015
SHEET 112